



Amalfi

FULBROOK ON FULSHEAR CREEK



ELEVATION 1



These drawings are conceptual only and are for the convenience of reference. They should not be relied upon as representations, express or implied, of the final detail of the residences. The builder expressly reserves the right to make modifications, revisions, and changes it deems desirable in its sole and absolute discretion. Dimensions and square footages are approximate and may vary with actual construction. Due to design and footage requirements not all options/elevations are available in all locations.

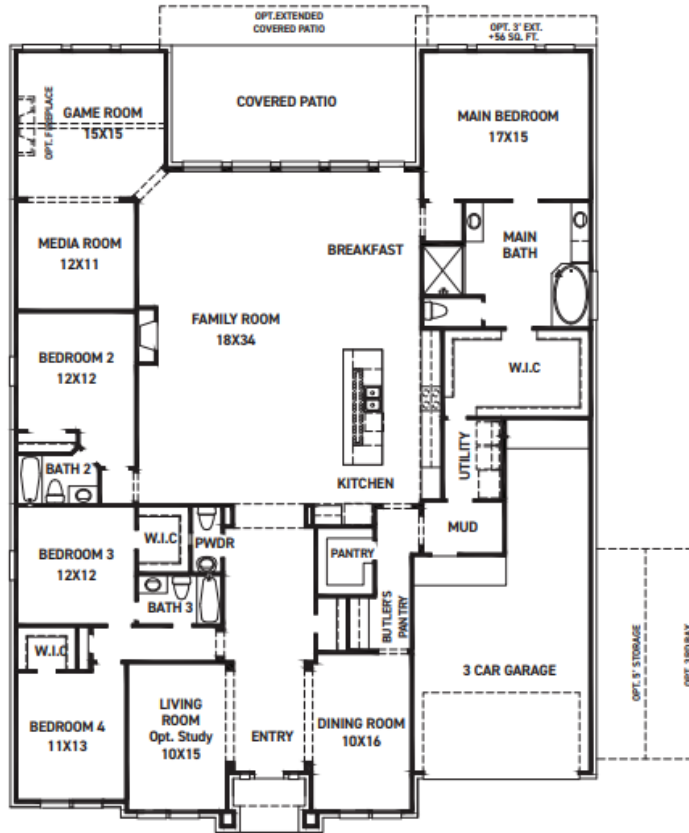


newmarkhomes.com



Amalfi

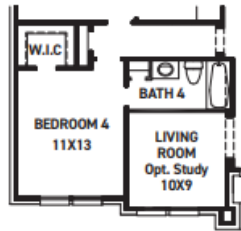
FULBROOK ON FULSHEAR CREEK



FIRST FLOOR PLAN

FEATURES:

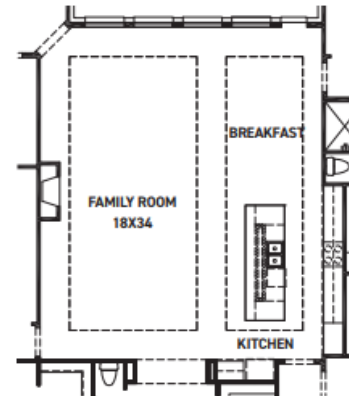
- 3,768 SQUARE FT.
- 4 BEDROOM
- 3 1/2 BATHROOM
- 3 CAR GARAGE



OPT. BATH 4

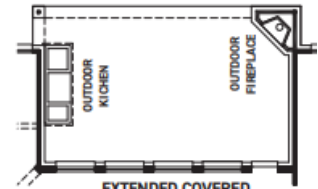


OPT. ALTERNATE KITCHEN LAYOUT

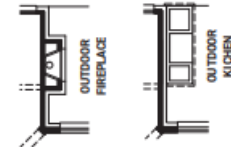


OPT. COFFERS

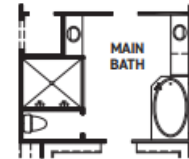
REV 09/25 (7029)



EXTENDED COVERED PATIO OPTIONS



COVERED PATIO OPTIONS



OPT. ENLARGED MAIN SHOWER



These drawings are conceptual only and are for the convenience of reference. They should not be relied upon as representations, express or implied, of the final detail of the residences. The builder expressly reserves the right to make modifications, revisions, and changes it deems desirable in its sole and absolute discretion. Dimensions and square footages are approximate and may vary with actual construction. Due to design and footage requirements not all options/elevations are available in all locations.



newmarkhomes.com