



# Buckingham

## KATY COURT



**ELEVATION 3**



**ELEVATION 5**



**ELEVATION 6**



**ELEVATION 7**



**ELEVATION 11**



**ELEVATION 12**



**ELEVATION 13**



These drawings are conceptual only and are for the convenience of reference. They should not be relied upon as representations, express or implied, of the final detail of the residences. The builder expressly reserves the right to make modifications, revisions, and changes it deems desirable in its sole and absolute discretion. Dimensions and square footages are approximate and may vary with actual construction. Due to design and footage requirements not all options/elevations are available in all locations.

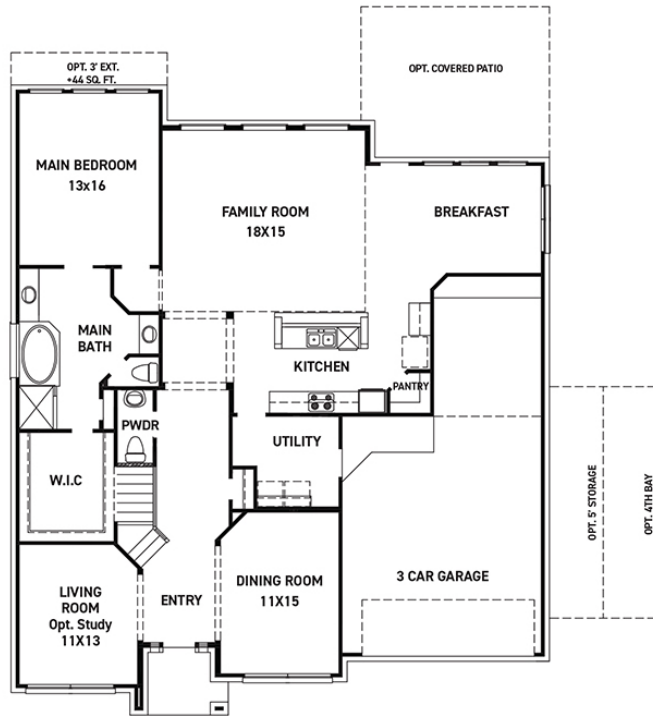


[newmarkhomes.com](http://newmarkhomes.com)

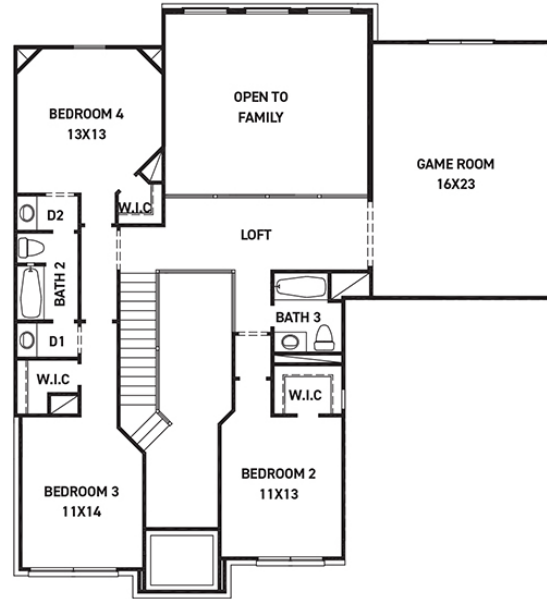


# Buckingham

## KATY COURT



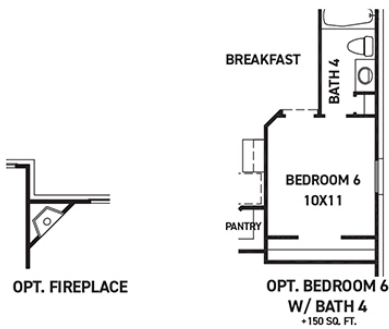
FIRST FLOOR PLAN



SECOND FLOOR PLAN

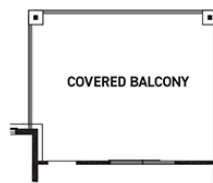
### FEATURES:

- 3,422 SQUARE FT.
- 4 BEDROOM
- 3 1/2 BATHROOM
- 3 CAR GARAGE



OPT. FIREPLACE

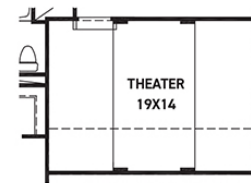
OPT. BEDROOM 6  
W/ BATH 4  
+150 SQ. FT.



OPT. COVERED BALCONY



OPT. MEDIA ROOM  
+275 SQ. FT.



OPT. THEATER ROOM  
+275 SQ. FT.

REV 04/24 (6014)



These drawings are conceptual only and are for the convenience of reference. They should not be relied upon as representations, express or implied, of the final detail of the residences. The builder expressly reserves the right to make modifications, revisions, and changes it deems desirable in its sole and absolute discretion. Dimensions and square footages are approximate and may vary with actual construction. Due to design and footage requirements not all options/elevations are available in all locations.



[newmarkhomes.com](http://newmarkhomes.com)