



# San Germain

## KATY COURT



**ELEVATION 7**



**ELEVATION 1**



**ELEVATION 3**



**ELEVATION 5**



**ELEVATION 6**



**ELEVATION 8**



**ELEVATION 9**



These drawings are conceptual only and are for the convenience of reference. They should not be relied upon as representations, express or implied, of the final detail of the residences. The builder expressly reserves the right to make modifications, revisions, and changes it deems desirable in its sole and absolute discretion. Dimensions and square footages are approximate and may vary with actual construction. Due to design and footage requirements not all options/elevations are available in all locations.

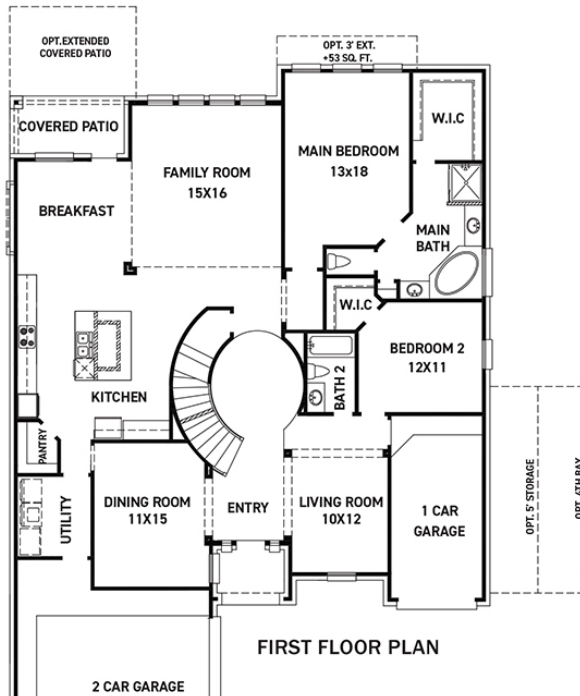


[newmarkhomes.com](http://newmarkhomes.com)

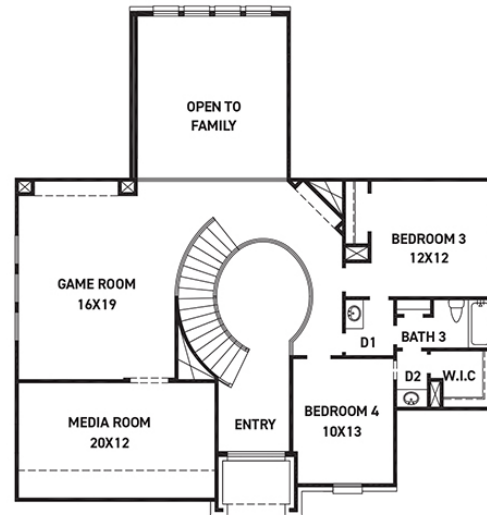


# San Germain

## KATY COURT



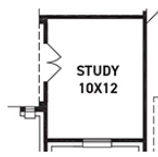
FIRST FLOOR PLAN



SECOND FLOOR PLAN

### FEATURES:

- 3,595 SQUARE FT.
- 4 BEDROOM
- 3 BATHROOM
- 3 CAR GARAGE



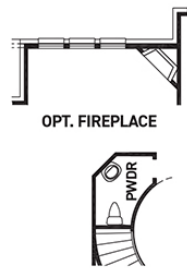
OPT. STUDY  
@ LIVING



OPT. EXTENDED  
MAIN BATH  
+56 SQ. FT.



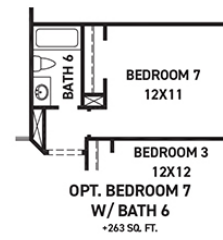
OPT. BEDROOM 8  
+208 SQ. FT.



OPT. POWDER



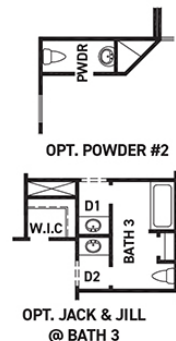
OPT. BATH 7



OPT. BEDROOM 7  
W/ BATH 6  
+263 SQ. FT.



OPT. BEDROOM 6  
W/ BATH 5  
+270 SQ. FT.



OPT. JACK & JILL  
@ BATH 3



OPT. BEDROOM 5  
W/ BATH 4 ILO MEDIA

REV 04/24 (6023)



These drawings are conceptual only and are for the convenience of reference. They should not be relied upon as representations, express or implied, of the final detail of the residences. The builder expressly reserves the right to make modifications, revisions, and changes it deems desirable in its sole and absolute discretion. Dimensions and square footages are approximate and may vary with actual construction. Due to design and footage requirements not all options/elevations are available in all locations.



[newmarkhomes.com](http://newmarkhomes.com)