



Salzburg

KATY COURT



ELEVATION 1



ELEVATION 2



ELEVATION 3



ELEVATION 4



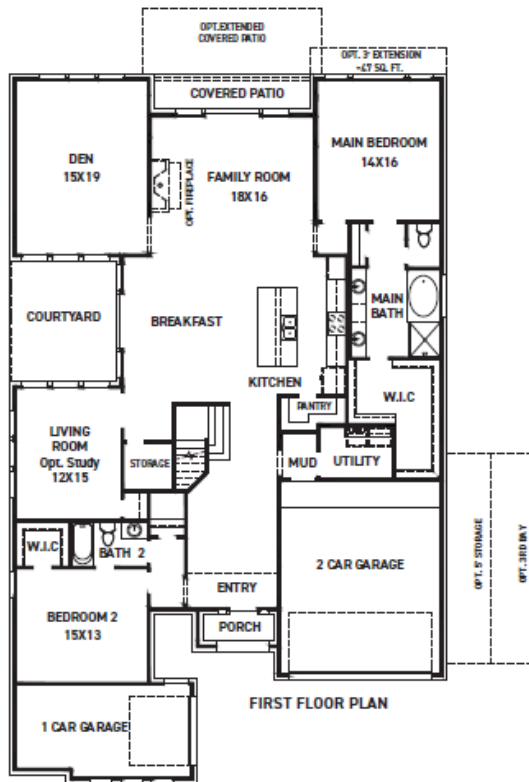
ELEVATION 6



These drawings are conceptual only and are for the convenience of reference. They should not be relied upon as representations, express or implied, of the final detail of the residences. The builder expressly reserves the right to make modifications, revisions, and changes it deems desirable in its sole and absolute discretion. Dimensions and square footages are approximate and may vary with actual construction. Due to design and footage requirements not all options/elevations are available in all locations.



newmarkhomes.com



FIRST FLOOR PLAN



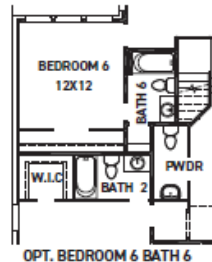
SECOND FLOOR PLAN

FEATURES:

- 3576 SQUARE FT.
- 4 BEDROOM
- 3 BATHROOMS
- 3 CAR SPLIT GARAGE



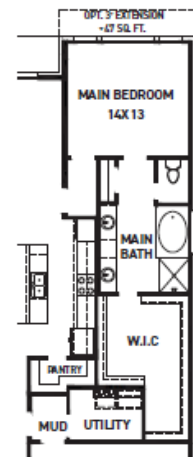
OPT. ENLARGED
MAIN SHOWER



OPT. BEDROOM 6 BATH &
POWDER ILO LIVING & STOR.



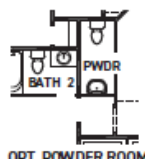
OPT. BEDROOM 7/
BATH 7
~238 SQ. FT.



OPT. EXT. MAIN CLOSET



OPT. BUTLER'S BAR
ILO STORAGE



OPT. POWDER ROOM
ILO STORAGE



OPT. BEDROOM 5
BATH 5 ILO DEN



OPT. BEDROOM 6
BATH 6 ILO LIVING



OPT. BATH 4

REV 10/25 (6044)



These drawings are conceptual only and are for the convenience of reference. They should not be relied upon as representations, express or implied, of the final detail of the residences. The builder expressly reserves the right to make modifications, revisions, and changes it deems desirable in its sole and absolute discretion. Dimensions and square footages are approximate and may vary with actual construction. Due to design and footage requirements not all options/elevations are available in all locations.



newmarkhomes.com