



# Monticello

## LEGACY PRAIRIE AT KATY COURT



**ELEVATION 4**



**ELEVATION 1**



**ELEVATION 2**



**ELEVATION 3**



These drawings are conceptual only and are for the convenience of reference. They should not be relied upon as representations, express or implied, of the final detail of the residences. The builder expressly reserves the right to make modifications, revisions, and changes it deems desirable in its sole and absolute discretion. Dimensions and square footages are approximate and may vary with actual construction. Due to design and footage requirements not all options/elevations are available in all locations.

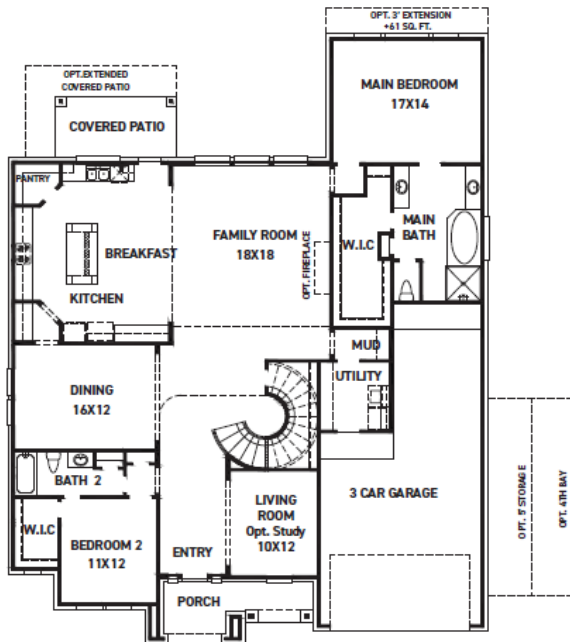


[newmarkhomes.com](http://newmarkhomes.com)

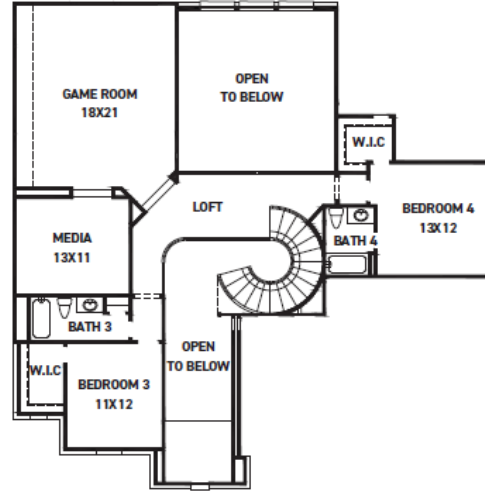


# Monticello

## LEGACY PRAIRIE AT KATY COURT



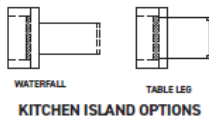
FIRST FLOOR PLAN



SECOND FLOOR PLAN

### FEATURES:

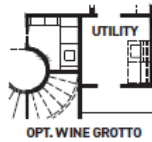
- 3792 SQUARE FT.
- 4 BEDROOM
- 4 BATHROOMS
- 3 CAR GARAGE



KITCHEN ISLAND OPTIONS



OPT. POWDER ROOM



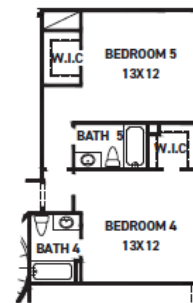
OPT. WINE GROTTO



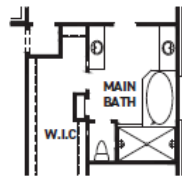
OPT. STUDY 2



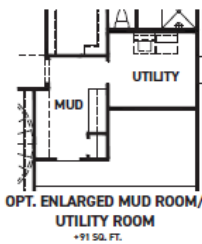
OPT. BEDROOM 6



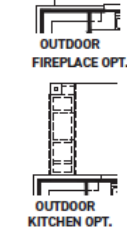
OPT. BEDROOM 5 BATH 5  
+282 SQ. FT.



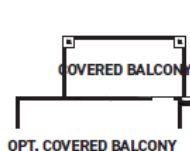
OPT. ENLARGED MAIN SHOWER



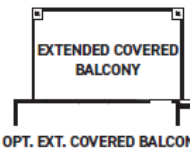
OPT. ENLARGED MUD ROOM/  
UTILITY ROOM  
+91 SQ. FT.



OUTDOOR FIREPLACE OPT.  
OUTDOOR KITCHEN OPT.



OPT. COVERED BALCONY



OPT. EXT. COVERED BALCONY

REV 02/26 (6502)



These drawings are conceptual only and are for the convenience of reference. They should not be relied upon as representations, express or implied, of the final detail of the residences. The builder expressly reserves the right to make modifications, revisions, and changes it deems desirable in its sole and absolute discretion. Dimensions and square footages are approximate and may vary with actual construction. Due to design and footage requirements not all options/elevations are available in all locations.



[newmarkhomes.com](http://newmarkhomes.com)