



# Castilian

## COLTON - FEDRICK HARRIS



**ELEVATION 6**



**ELEVATION 1**



**ELEVATION 3**



**ELEVATION 4**



**ELEVATION 5**



**ELEVATION 7**



©Feb, 2020, Newmark Homes. All rights reserved. Homes shown are representative of proposed Newmark Homes and are strictly for illustrative purposes only. All information (including, but not limited to prices, availability, incentives, floor plans, site plans, features, standards and options, assessments and fees, planned amenities, programs, conceptual artists' renderings, community development plans and/or scheduled promotional events) is not guaranteed and remains subject to change or delay without notice. Maps and plans are not to scale and all dimensions are approximate. Please see a Newmark Homes sales associate for details and visit [www.newmarkhomes.com](http://www.newmarkhomes.com) 2/20



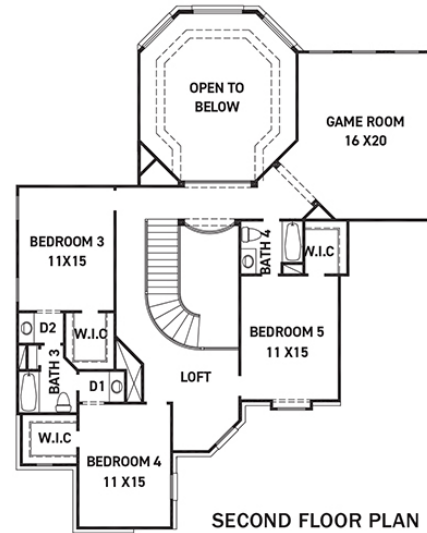
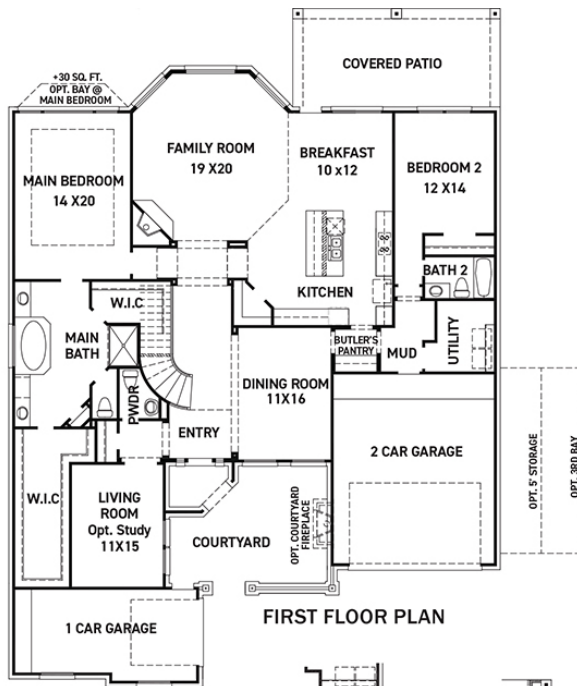
**FEDRICK HARRIS**  
ESTATE HOMES





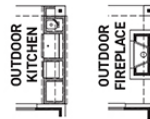
# Castilian

## COLTON - FEDRICK HARRIS

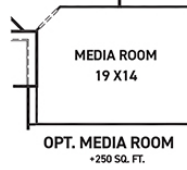
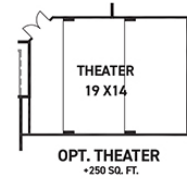
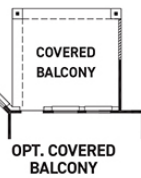
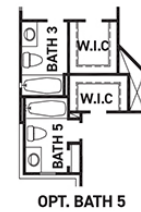


### FEATURES:

- 4,313 SQUARE FT.
- 5 BEDROOM
- 4 1/2 BATHROOM
- 3 CAR GARAGE



**OPTIONS @ COVERED PATIO**



REV 06/24 (7018)



©Feb, 2020, Newmark Homes. All rights reserved. Homes shown are representative of proposed Newmark Homes and are strictly for illustrative purposes only. All information (including, but not limited to prices, availability, incentives, floor plans, site plans, features, standards and options, assessments and fees, planned amenities, programs, conceptual artists' renderings, community development plans and/or scheduled promotional events) is not guaranteed and remains subject to change or delay without notice. Maps and plans are not to scale and all dimensions are approximate. Please see a Newmark Homes sales associate for details and visit [www.newmarkhomes.com](http://www.newmarkhomes.com) 2/20



**FEDRICK HARRIS**  
ESTATE HOMES

