



Rialto

COLTON - FEDRICK HARRIS



ELEVATION 5



ELEVATION 1



ELEVATION 2



ELEVATION 3



ELEVATION 4



ELEVATION 6



ELEVATION 7



ELEVATION 8



©Feb, 2020, Newmark Homes. All rights reserved. Homes shown are representative of proposed Newmark Homes and are strictly for illustrative purposes only. All information (including, but not limited to prices, availability, incentives, floor plans, site plans, features, standards and options, assessments and fees, planned amenities, programs, conceptual artists' renderings, community development plans and/or scheduled promotional events) is not guaranteed and remains subject to change or delay without notice. Maps and plans are not to scale and all dimensions are approximate. Please see a Newmark Homes sales associate for details and visit www.newmarkhomes.com 2/20



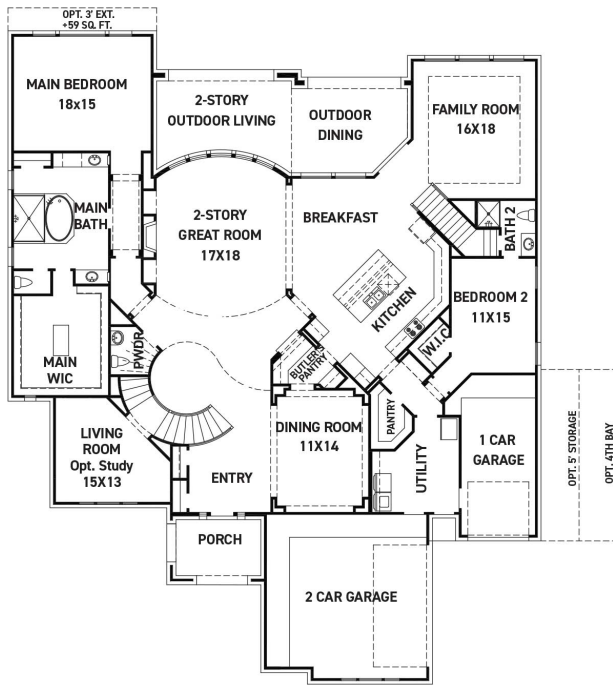
FEDRICK HARRIS
ESTATE HOMES



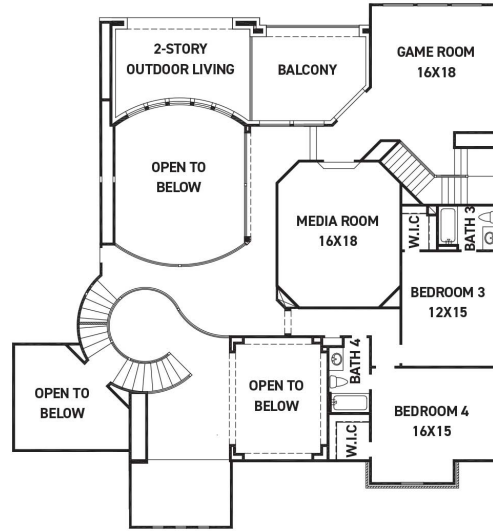


Rialto

COLTON - FEDRICK HARRIS



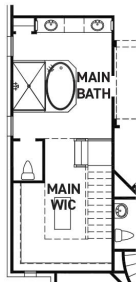
FIRST FLOOR PLAN



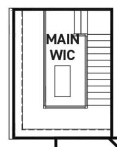
SECOND FLOOR PLAN

FEATURES:

- 5,307 SQUARE FT.
- 4 BEDROOM
- 4 1/2 BATHROOM
- 3 CAR GARAGE



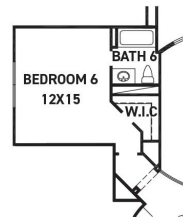
OPT. 2 STORY
MAIN CLOSET



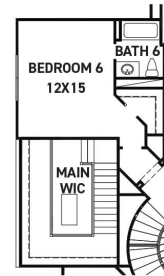
OPT. 2 STORY
MAIN CLOSET
2ND FLOOR
+163 SQ. FT.



OPT. BEDROOM 5
W/ BATH 5



OPT. BEDROOM 6
W/ BATH 6
+298 SQ. FT.



OPT. BEDROOM 6/BATH 6
W/ OPT. 2 STORY MAIN CLOSET
+298 SQ. FT.

REV 04/25 (8013)



©Feb, 2020, Newmark Homes. All rights reserved. Homes shown are representative of proposed Newmark Homes and are strictly for illustrative purposes only. All information (including, but not limited to prices, availability, incentives, floor plans, site plans, features, standards and options, assessments and fees, planned amenities, programs, conceptual artists' renderings, community development plans and/or scheduled promotional events) is not guaranteed and remains subject to change or delay without notice. Maps and plans are not to scale and all dimensions are approximate. Please see a Newmark Homes sales associate for details and visit www.newmarkhomes.com 2/20



FEDRICK HARRIS
ESTATE HOMES

