



Villa Amalfi

TWINWOOD - FEDRICK HARRIS



ELEVATION 5



ELEVATION 1



ELEVATION 2



ELEVATION 3



ELEVATION 4



ELEVATION 6



ELEVATION 7



©Feb, 2020, Newmark Homes. All rights reserved. Homes shown are representative of proposed Newmark Homes and are strictly for illustrative purposes only. All information (including, but not limited to prices, availability, incentives, floor plans, site plans, features, standards and options, assessments and fees, planned amenities, programs, conceptual artists' renderings, community development plans and/or scheduled promotional events) is not guaranteed and remains subject to change or delay without notice. Maps and plans are not to scale and all dimensions are approximate. Please see a Newmark Homes sales associate for details and visit www.newmarkhomes.com 2/20



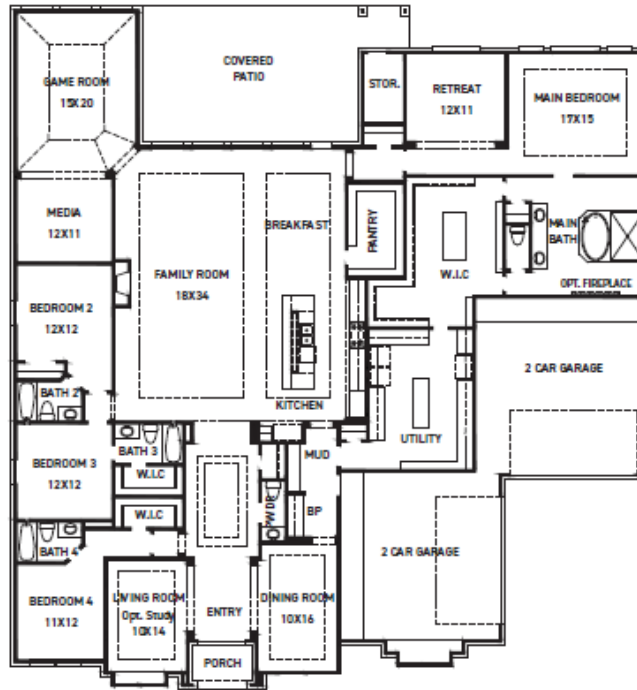
FEDRICK HARRIS
ESTATE HOMES





Villa Amalfi

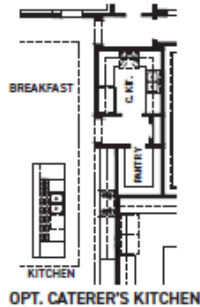
TWINWOOD - FEDRICK HARRIS



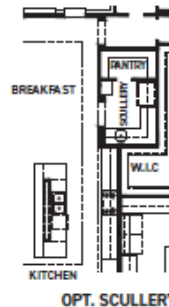
FIRST FLOOR PLAN

FEATURES:

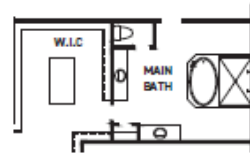
- 4493 SQUARE FT.
- 4 BEDROOM
- 4 1/2 BATHROOM
- 4 CAR SPLIT GARAGE



OPT. CATERER'S KITCHEN



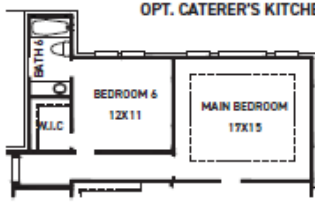
OPT. SCULLERY



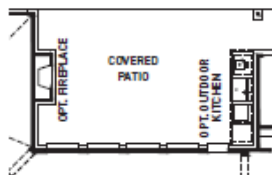
OPT. SPLIT VANITY @ MAIN BATH



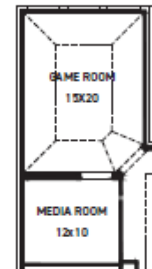
OPT. BATH 6
~54 SQ. FT.



OPT. BEDROOM 6/BATH 6
~96 SQ. FT.



COVERED PATIO OPTIONS



OPT. MEDIA



OPT. BEDROOM 5/BATH 5

REV 01/26 (9026)



©Feb, 2020, Newmark Homes. All rights reserved. Homes shown are representative of proposed Newmark Homes and are strictly for illustrative purposes only. All information (including, but not limited to prices, availability, incentives, floor plans, site plans, features, standards and options, assessments and fees, planned amenities, programs, conceptual artists' renderings, community development plans and/or scheduled promotional events) is not guaranteed and remains subject to change or delay without notice. Maps and plans are not to scale and all dimensions are approximate. Please see a Newmark Homes sales associate for details and visit www.newmarkhomes.com 2/20



FEDRICK HARRIS
ESTATE HOMES

