



# Bluebell

Priced from \$390,990

Sq Ft	Beds	Baths	Stories	Garage
2,223	3	2.5	2	2



**ELEVATION 1**



**ELEVATION 2**



**ELEVATION 3**

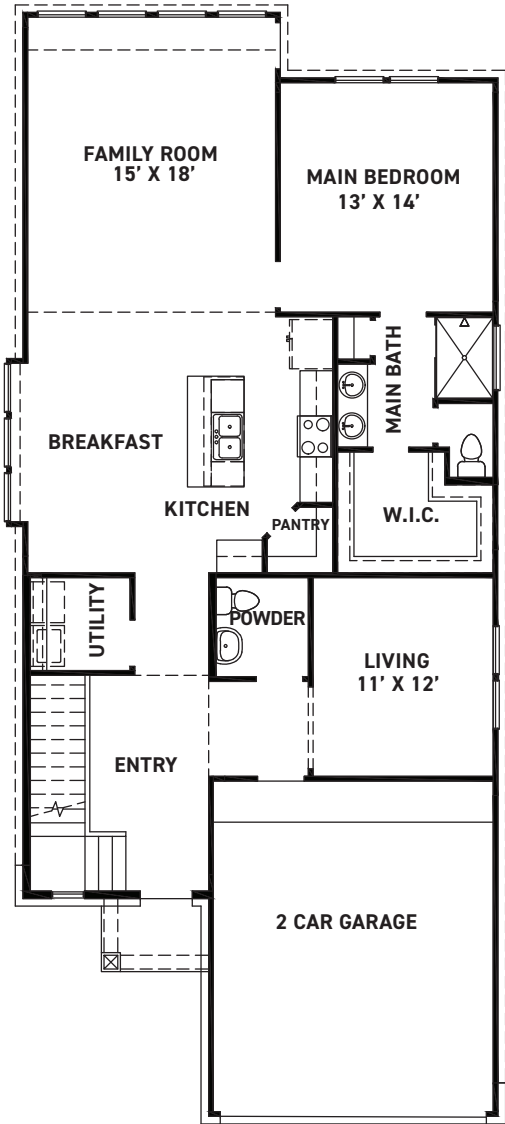
REV 10/24 (401J)



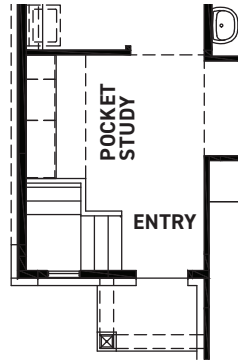
These drawings are conceptual only and are for the convenience of reference. They should not be relied upon as representations, express or implied, of the final detail of the residences. The builder expressly reserves the right to make modifications, revisions, and changes it deems desirable in its sole and absolute discretion. Dimensions and square footages are approximate and may vary with actual construction.



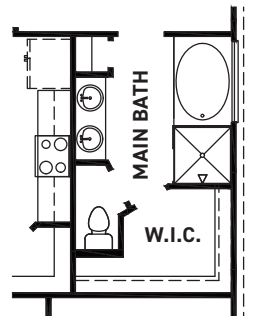
[newmarkhomes.com](http://newmarkhomes.com)



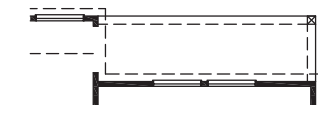
FIRST FLOOR PLAN



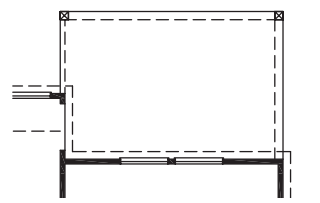
POCKET STUDY OPTION



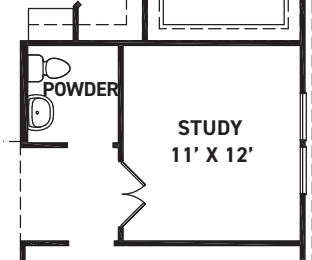
TUB @ MAIN BATH OPTION



COVERED PATIO OPTION



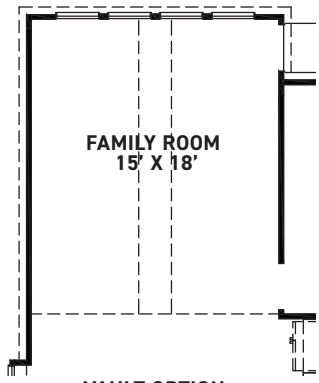
EXTENDED COVERED PATIO OPTION



STUDY OPTION



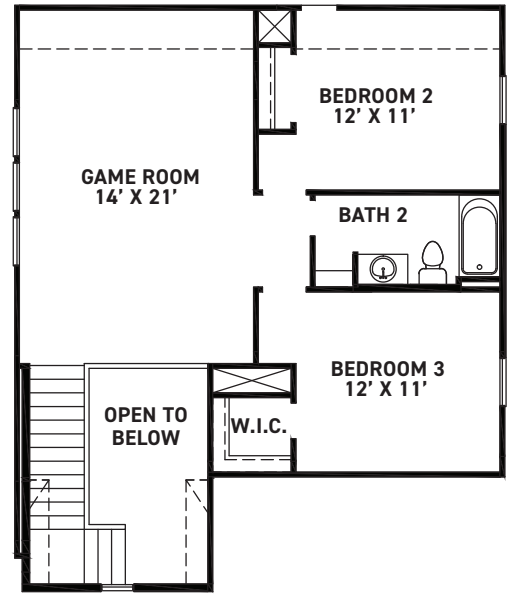
BEDROOM 4 BATH 3 ILO LIVING



VAULT OPTION



BEDROOM 5 OPTION



SECOND FLOOR PLAN

FEATURES:

- 2223 SQUARE FT.
- 3 BEDROOM
- 2-1/2 BATHROOM
- 2 CAR GARAGE

REV 10/24(401J)



These drawings are conceptual only and are for the convenience of reference. They should not be relied upon as representations, express or implied, of the final detail of the residences. The builder expressly reserves the right to make modifications, revisions, and changes it deems desirable in its sole and absolute discretion. Dimensions and square footages are approximate and may vary with actual construction.



[newmarkhomes.com](http://newmarkhomes.com)