



Archer

Priced from \$412,990

Sq Ft	Beds	Baths	Stories	Garage
2,481	4	3	2	2

The Archer floor plan in the Portrait Series features 2,481 sqft, 4 bedrooms, 3 bathrooms, and a 2-car garage. This two-story floor plan offers a second main bedroom option, 2 kitchen upgrade options, 5' storage option, fireplace options, family room vault options, and covered patio opt... [READ MORE »](#)ions.



ELEVATION A



ELEVATION B



ELEVATION C



ELEVATION D



ELEVATION E

REV 04/24 (4)

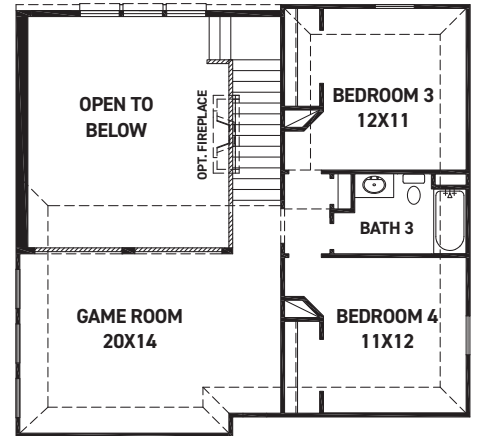
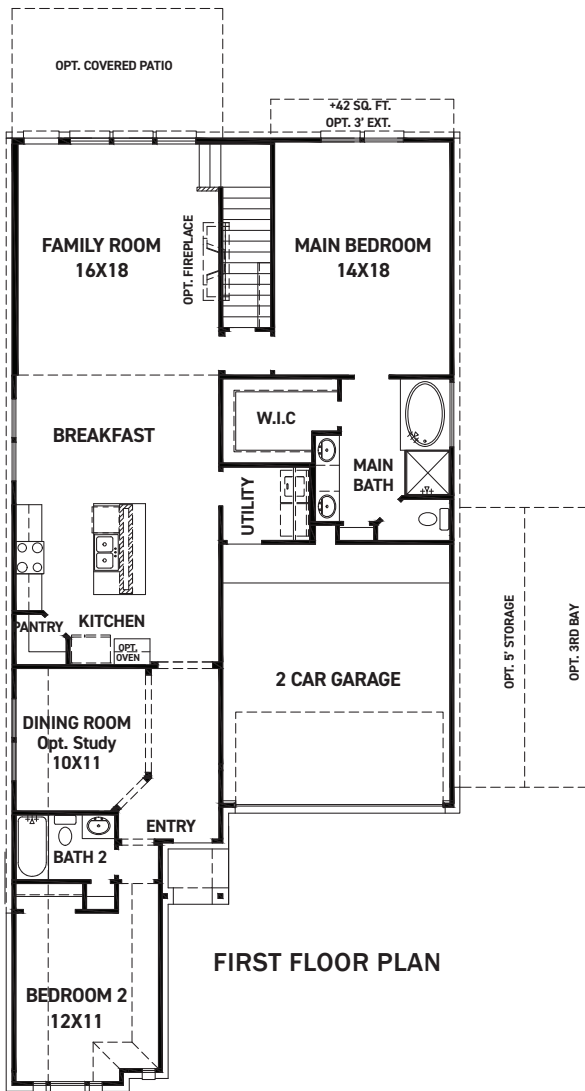


These drawings are conceptual only and are for the convenience of reference. They should not be relied upon as representations, express or implied, of the final detail of the residences. The builder expressly reserves the right to make modifications, revisions, and changes it deems desirable in its sole and absolute discretion. Dimensions and square footages are approximate and may vary with actual construction. Due to design and footage requirements not all options/elevations are available in all locations.



newmarkhomes.com

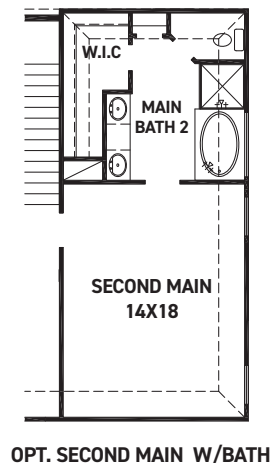
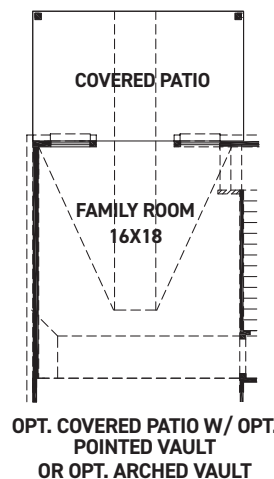
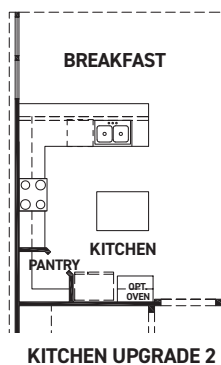
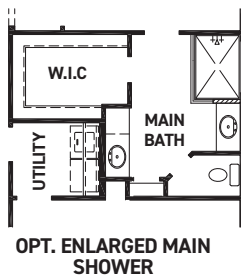
April 24, 2024



SECOND FLOOR PLAN

FEATURES:

- 2,481 SQUARE FT.
- 4 BEDROOM
- 3 BATHROOM
- 2 CAR GARAGE



REV 04/24 (45



These drawings are conceptual only and are for the convenience of reference. They should not be relied upon as representations, express or implied, of the final detail of the residences. The builder expressly reserves the right to make modifications, revisions, and changes it deems desirable in its sole and absolute discretion. Dimensions and square footages are approximate and may vary with actual construction. Due to design and footage requirements not all options/elevations are available in all locations.



newmarkhomes.com

April 24, 2024