



Cameron

Priced from \$362,990

Sq Ft	Beds	Baths	Stories	Garage
1,760	4	3	1	2

The Cameron floor plan in the Portrait Series features 1,760 sqft, 4 bedrooms, 3 bathrooms, and a 2-car garage. This single-story floor plan offers several options for the main bedroom suite, kitchen upgrade options, covered patio, and family room. Download the floor plan to see the man... [READ MORE](#) »y options available!



ELEVATION A



ELEVATION B



ELEVATION C



ELEVATION D



ELEVATION E

REV 04/24 (451C)



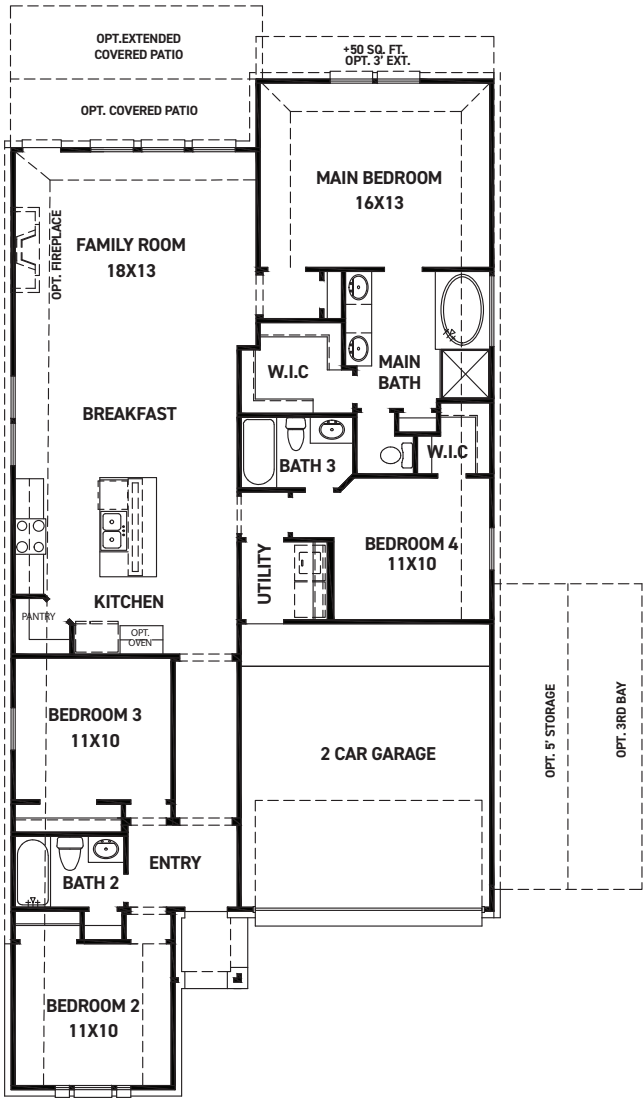
These drawings are conceptual only and are for the convenience of reference. They should not be relied upon as representations, express or implied, of the final detail of the residences. The builder expressly reserves the right to make modifications, revisions, and changes it deems desirable in its sole and absolute discretion. Dimensions and square footages are approximate and may vary with actual construction. Due to design and footage requirements not all options/elevations are available in all locations.



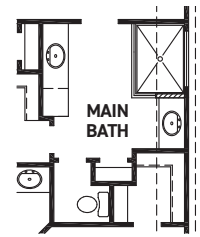
newmarkhomes.com



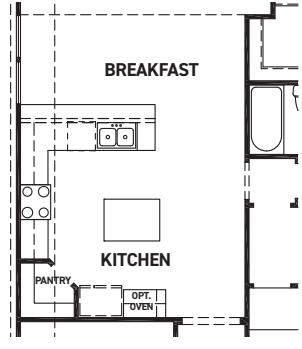
Cameron



FIRST FLOOR PLAN



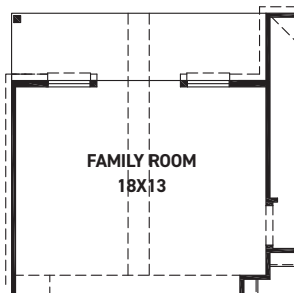
OPT. ENLARGED MAIN SHOWER



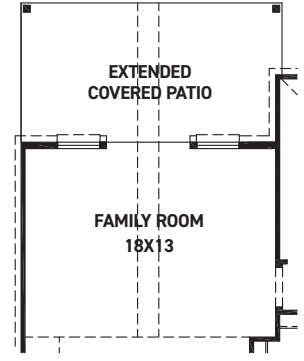
KITCHEN UPGRADE 2

FEATURES:

- 1,760 SQUARE FT.
- 4 BEDROOM
- 3 BATHROOM
- 2 CAR GARAGE



OPT. COVERED PATIO W/ OPT. POINTED VAULT OR OPT. ARCHED VAULT



OPT. EXTENDED COVERED PATIO W/ OPT. POINTED VAULT OR OPT. ARCHED VAULT

REV 04/24 (451C)



These drawings are conceptual only and are for the convenience of reference. They should not be relied upon as representations, express or implied, of the final detail of the residences. The builder expressly reserves the right to make modifications, revisions, and changes it deems desirable in its sole and absolute discretion. Dimensions and square footages are approximate and may vary with actual construction. Due to design and footage requirements not all options/elevations are available in all locations.



newmarkhomes.com

November 21, 2024