



# Eastland

Priced from \$358,990

| Sq Ft        | Beds     | Baths    | Stories  | Garage   |
|--------------|----------|----------|----------|----------|
| <b>1,811</b> | <b>3</b> | <b>2</b> | <b>1</b> | <b>2</b> |

The Eastland floor plan in the Portrait Series features 1,811 sqft, 3 bedrooms, 2 bathrooms, and a 2-car garage. This single-story floor plan offers kitchen upgrades, family room vault options, 2 fire place options, and a covered patio option.



**ELEVATION A**



**ELEVATION B**



**ELEVATION C**



**ELEVATION D**



**ELEVATION E**

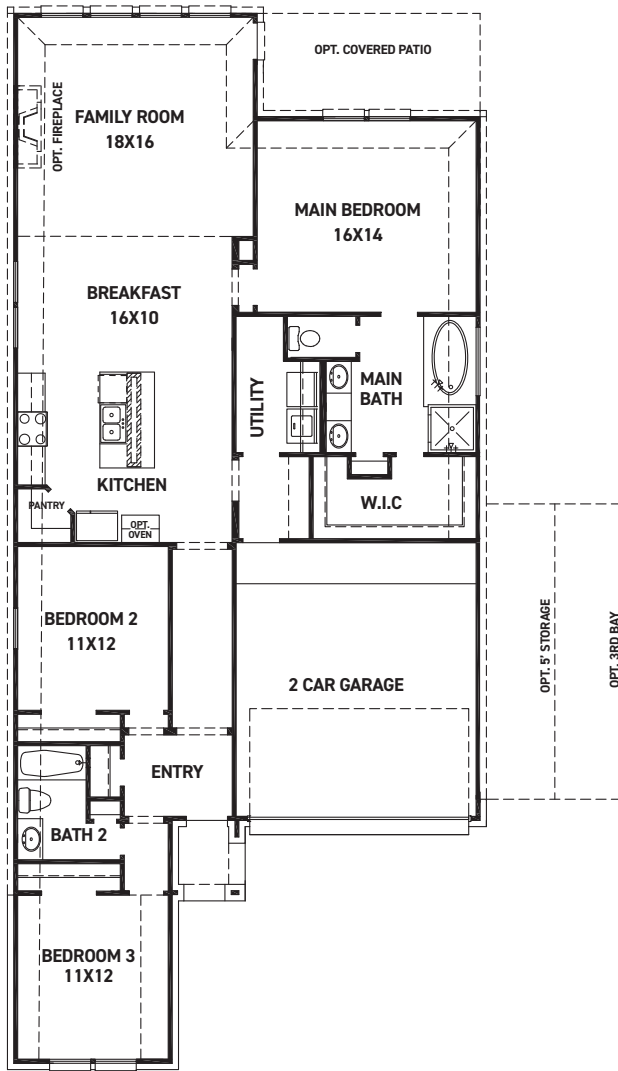
REV 03/23 (4



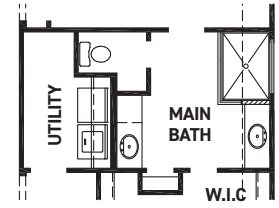
These drawings are conceptual only and are for the convenience of reference. They should not be relied upon as representations, express or implied, of the final detail of the residences. The builder expressly reserves the right to make modifications, revisions, and changes it deems desirable in its sole and absolute discretion. Dimensions and square footages are approximate and may vary with actual construction.



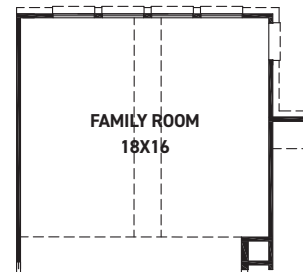
[newmarkhomes.com](http://newmarkhomes.com)



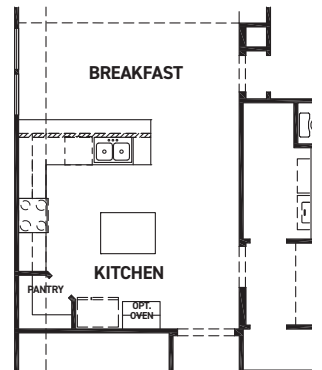
FIRST FLOOR PLAN



OPT. ENLARGED MAIN SHOWER



OPT. POINTED VAULT  
OPT. ARCHED VAULT



KITCHEN UPGRADE

### FEATURES:

- 1,811 SQUARE FT.
- 3 BEDROOM
- 2 BATHROOM
- 2 CAR GARAGE

REV 03/23 (451E)



These drawings are conceptual only and are for the convenience of reference. They should not be relied upon as representations, express or implied, of the final detail of the residences. The builder expressly reserves the right to make modifications, revisions, and changes it deems desirable in its sole and absolute discretion. Dimensions and square footages are approximate and may vary with actual construction. Due to design and footage requirements not all options/elevations are available in all locations.



[newmarkhomes.com](http://newmarkhomes.com)