



# Llano

Priced from \$349,990

Sq Ft	Beds	Baths	Stories	Garage
<b>1,646</b>	<b>3</b>	<b>2</b>	<b>1</b>	<b>2</b>

The Llano floor plan in the Portrait Series features 1,646 sqft, 3 bedrooms, 2 bathrooms, and a 2-car garage. This single-story floor plan offers a main bedroom bay option, covered patio option, family room options, storage options, and fireplace options.



**ELEVATION A**



**ELEVATION B**



**ELEVATION C**



**ELEVATION D**



**ELEVATION E**

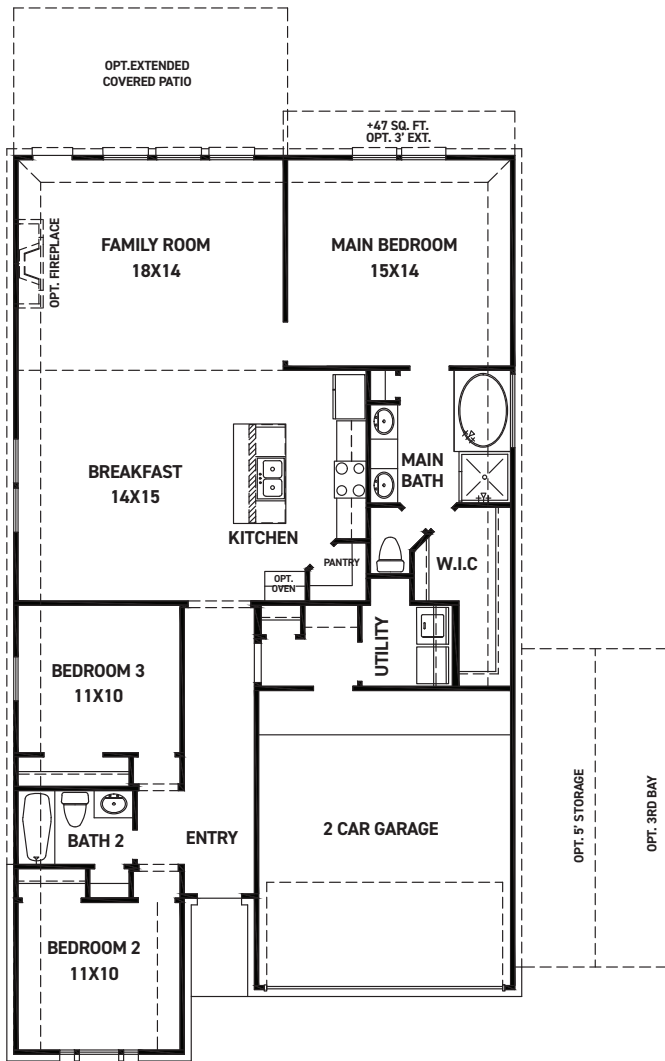
REV 04/24 (451L)



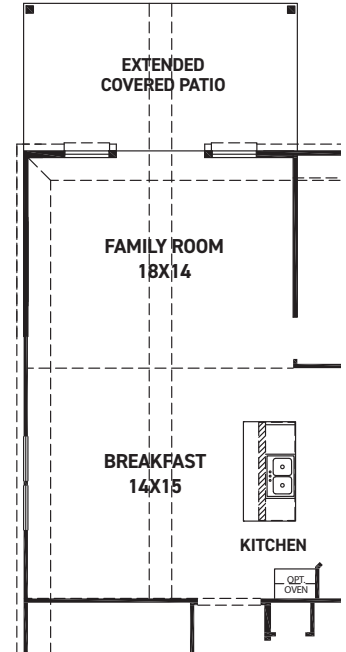
These drawings are conceptual only and are for the convenience of reference. They should not be relied upon as representations, express or implied, of the final detail of the residences. The builder expressly reserves the right to make modifications, revisions, and changes it deems desirable in its sole and absolute discretion. Dimensions and square footages are approximate and may vary with actual construction. Due to design and footage requirements not all options/elevations are available in all locations.



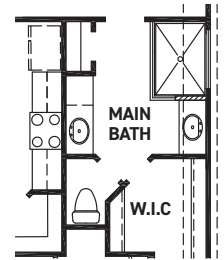
[newmarkhomes.com](http://newmarkhomes.com)



FIRST FLOOR PLAN



OPT. EXTENDED COVERED PATIO  
W/ OPT. POINTED VAULT  
OR OPT. ARCHED VAULT



OPT. ENLARGED MAIN  
SHOWER

## FEATURES:

- 1,646 SQUARE FT.
- 3 BEDROOM
- 2 BATHROOM
- 2 CAR GARAGE

REV 04/24 (451L)



These drawings are conceptual only and are for the convenience of reference. They should not be relied upon as representations, express or implied, of the final detail of the residences. The builder expressly reserves the right to make modifications, revisions, and changes it deems desirable in its sole and absolute discretion. Dimensions and square footages are approximate and may vary with actual construction. Due to design and footage requirements not all options/elevations are available in all locations.