



# Burnet

Pricing Available Upon Request

Sq Ft	Beds	Baths	Stories	Garage
2,799	4	3.5	2	2

The Burnet floor plan in the Portrait Series features 2,799sqft, 4 bedrooms, 3 bathrooms, and a 2-car garage. This two-story floor plan offers an enlarged main shower option, 2 kitchen upgrade options, study options, main bedroom bay options, family room vault options, and covered pati<... READ MORE »span class="readmoreWrapper">o options. The second floor offers a second main bedroom option.



ELEVATION A



ELEVATION B



ELEVATION C



ELEVATION D



ELEVATION E

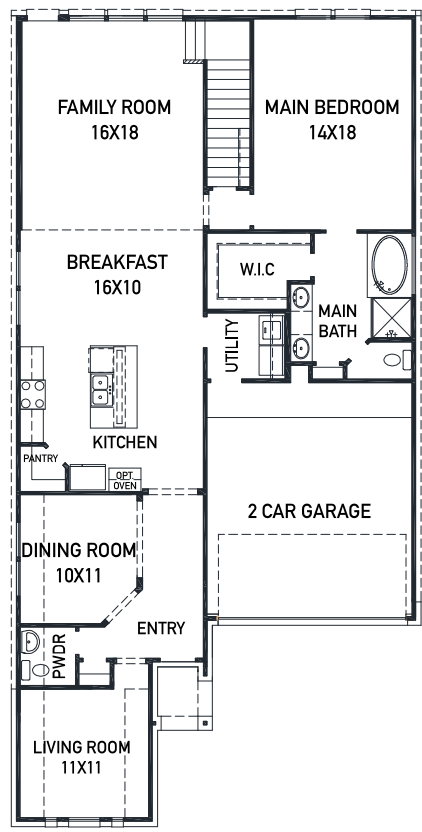
REV 8/20 (45



These drawings are conceptual only and are for the convenience of reference. They should not be relied upon as representations, express or implied, of the final detail of the residences. The builder expressly reserves the right to make modifications, revisions, and changes it deems desirable in its sole and absolute discretion. Dimensions and square footages are approximate and may vary with actual construction.



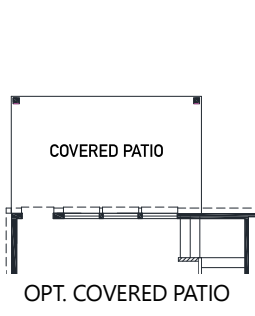
[newmarkhomes.com](http://newmarkhomes.com)



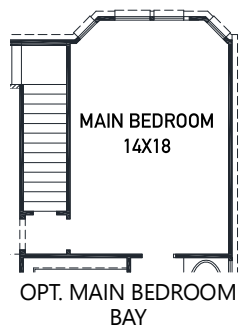
FIRST FLOOR PLAN

**FEATURES:**

- 2,799 SQUARE FT.
- 4 BEDROOM
- 3 1/2 BATHROOM
- 2 CAR GARAGE



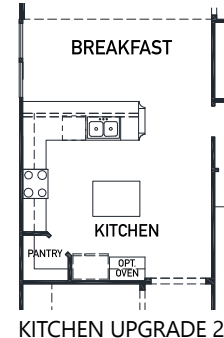
OPT. COVERED PATIO



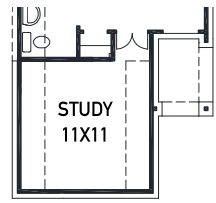
OPT. MAIN BEDROOM BAY



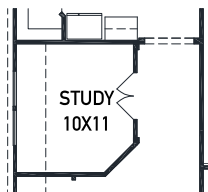
KITCHEN UPGRADE 1



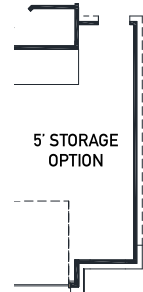
KITCHEN UPGRADE 2



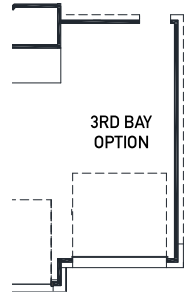
OPT. STUDY @ LIVING



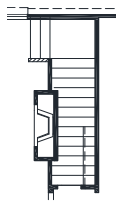
OPT. STUDY @ DINING



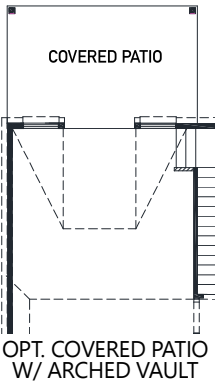
5' STORAGE OPTION



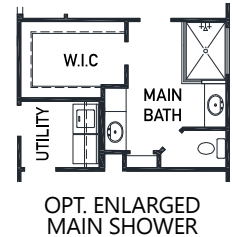
3RD BAY OPTION



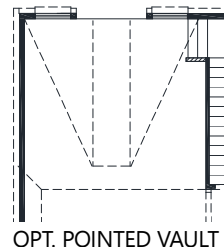
OPT. FIREPLACE



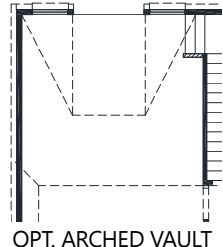
OPT. COVERED PATIO W/ ARCHED VAULT



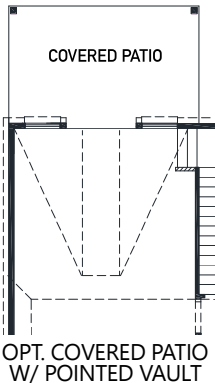
OPT. ENLARGED MAIN SHOWER



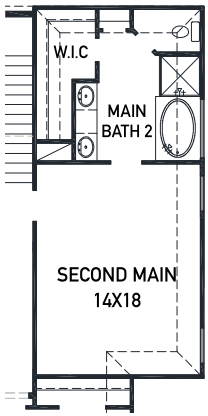
OPT. POINTED VAULT



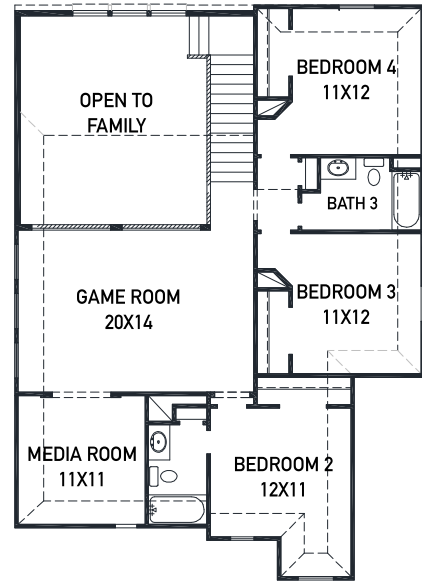
OPT. ARCHED VAULT



OPT. COVERED PATIO W/ POINTED VAULT



OPT. SECOND MAIN



SECOND FLOOR PLAN

REV 8/20 (45)



These drawings are conceptual only and are for the convenience of reference. They should not be relied upon as representations, express or implied, of the final detail of the residences. The builder expressly reserves the right to make modifications, revisions, and changes it deems desirable in its sole and absolute discretion. Dimensions and square footages are approximate and may vary with actual construction.



[newmarkhomes.com](http://newmarkhomes.com)