



Dawson

Priced from \$402,990

Sq Ft	Beds	Baths	Stories	Garage
2,617	4	3	2	2

The Dawson floor plan in the Portrait Series features 2,617 sqft, 4 bedrooms, 3 bathrooms, and a 2-car garage. This two-story floor plan offers an enlarged main shower option, main bedroom bay option, 2 kitchen upgrade options, fireplace options, family room vault options, and covered p... [READ MORE](#) »atio options.



ELEVATION A



ELEVATION B



ELEVATION C



ELEVATION D



ELEVATION E



ELEVATION F

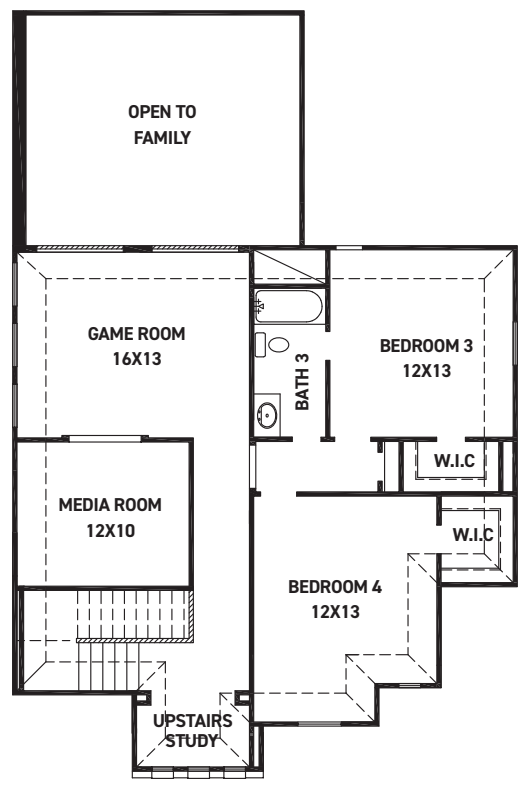
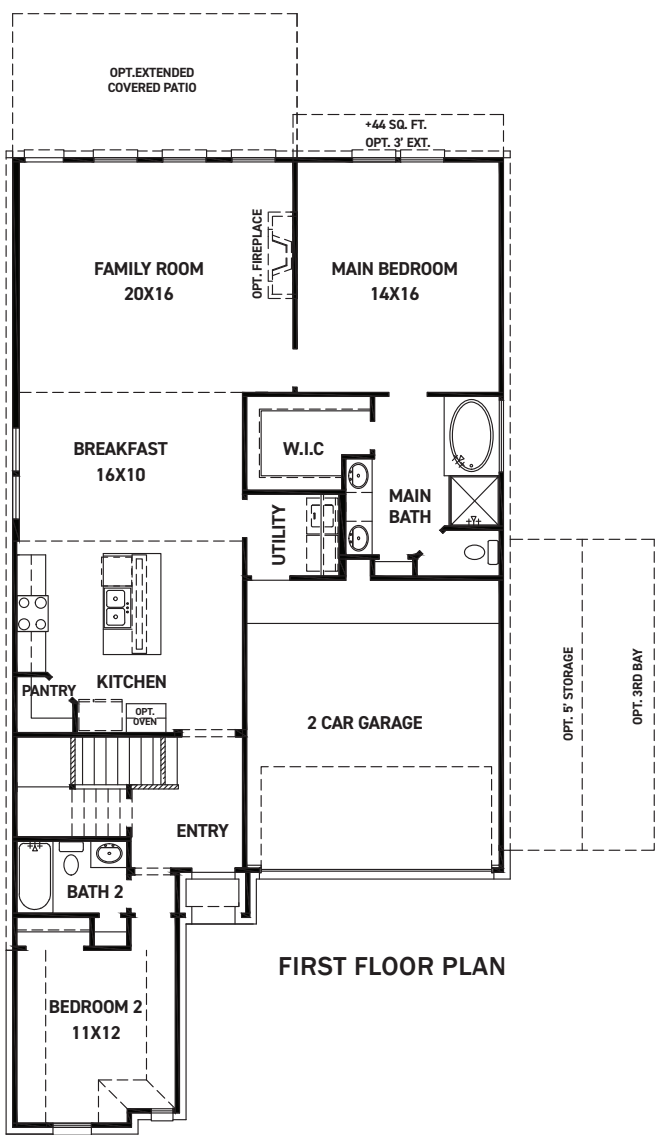
REV 04/24 (452)



These drawings are conceptual only and are for the convenience of reference. They should not be relied upon as representations, express or implied, of the final detail of the residences. The builder expressly reserves the right to make modifications, revisions, and changes it deems desirable in its sole and absolute discretion. Dimensions and square footages are approximate and may vary with actual construction. Due to design and footage requirements not all options/elevations are available in all locations.

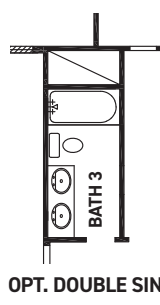
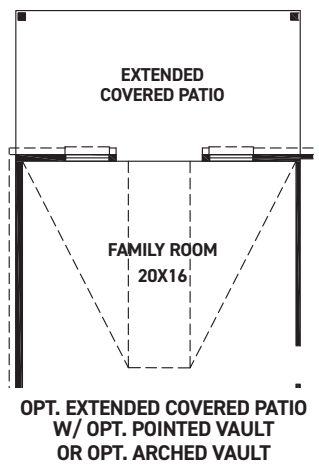
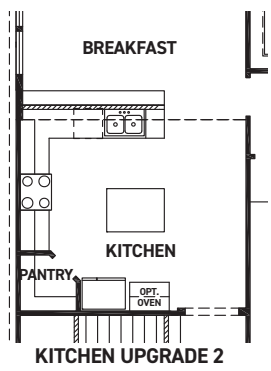
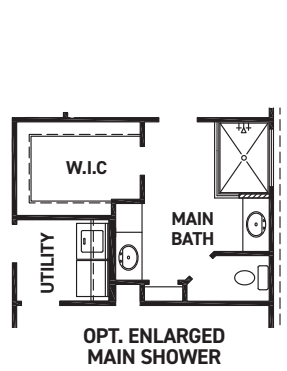


newmarkhomes.com



FEATURES:

- 2,617 SQUARE FT.
- 4 BEDROOM
- 3 BATHROOM
- 2 CAR GARAGE



REV 04/24 (4520)



These drawings are conceptual only and are for the convenience of reference. They should not be relied upon as representations, express or implied, of the final detail of the residences. The builder expressly reserves the right to make modifications, revisions, and changes it deems desirable in its sole and absolute discretion. Dimensions and square footages are approximate and may vary with actual construction. Due to design and footage requirements not all options/elevations are available in all locations.



newmarkhomes.com