



Kinney

Priced from \$384,990

Sq Ft	Beds	Baths	Stories	Garage
2,121	4	3	2	2

The Kinney floor plan in the Portrait Series features 2,121 sqft, 4 bedrooms, 3 bathrooms, and a 2-car garage. This single-story floor plan offers a main bedroom bay option, covered patio option, kitchen upgrades, 3rd bay garage option, and vaulted family room options.



ELEVATION A



ELEVATION B



ELEVATION C



ELEVATION D



ELEVATION E

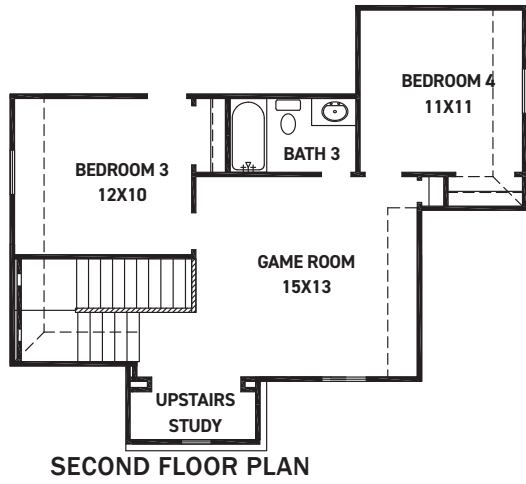
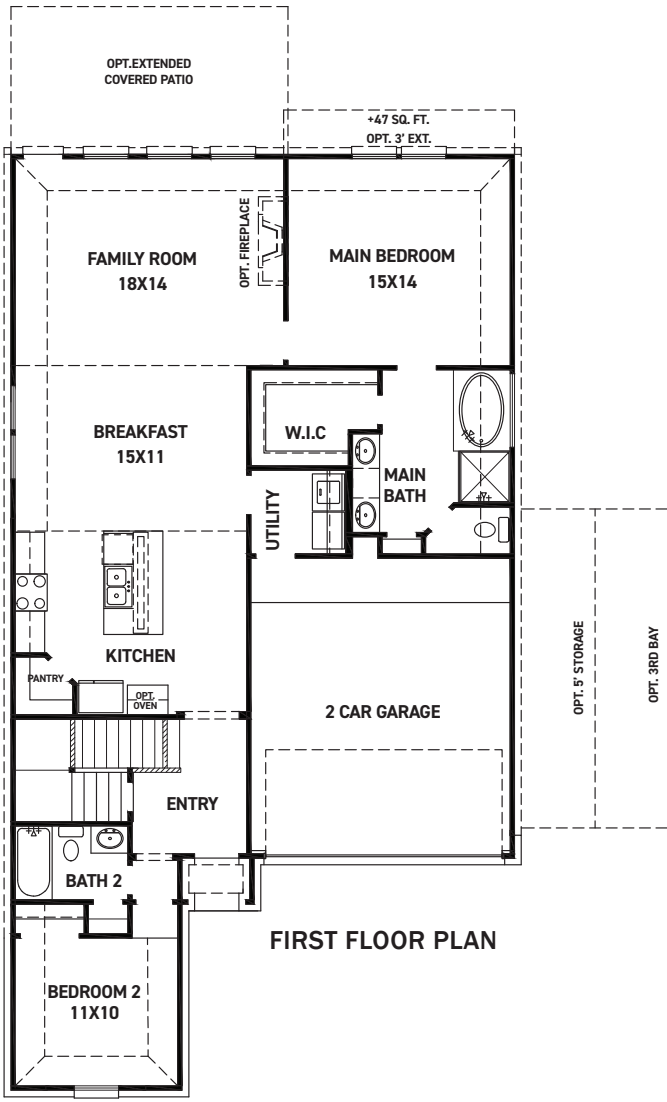
REV 04/24 (452K)



These drawings are conceptual only and are for the convenience of reference. They should not be relied upon as representations, express or implied, of the final detail of the residences. The builder expressly reserves the right to make modifications, revisions, and changes it deems desirable in its sole and absolute discretion. Dimensions and square footages are approximate and may vary with actual construction. Due to design and footage requirements not all options/elevations are available in all locations.

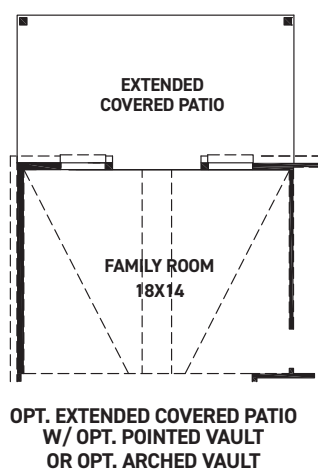
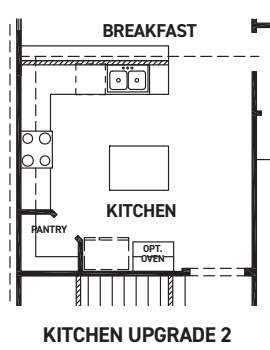
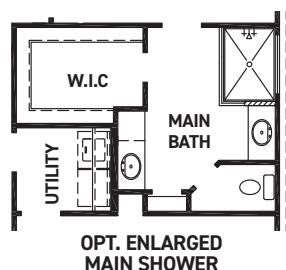


newmarkhomes.com



FEATURES:

- 2,121 SQUARE FT.
- 4 BEDROOM
- 3 BATHROOM
- 2 CAR GARAGE



REV 04/24 (452)



These drawings are conceptual only and are for the convenience of reference. They should not be relied upon as representations, express or implied, of the final detail of the residences. The builder expressly reserves the right to make modifications, revisions, and changes it deems desirable in its sole and absolute discretion. Dimensions and square footages are approximate and may vary with actual construction. Due to design and footage requirements not all options/elevations are available in all locations.



newmarkhomes.com