



Maverick

Priced from \$393,990

Sq Ft	Beds	Baths	Stories	Garage
2,459	3	2.5	2	2

The Maverick floor plan in the Portrait Series features 2,459 sqft, 3 bedrooms, 2.5 bathrooms, and a 2-car garage. This floor plan offers an enlarged main shower option, study options, 5' storage option, fireplace options, and family room vault options. The second floor offers 4 and 5 b... [READ MORE](#) »edroom options.



ELEVATION A



ELEVATION B



ELEVATION C



ELEVATION D



ELEVATION E

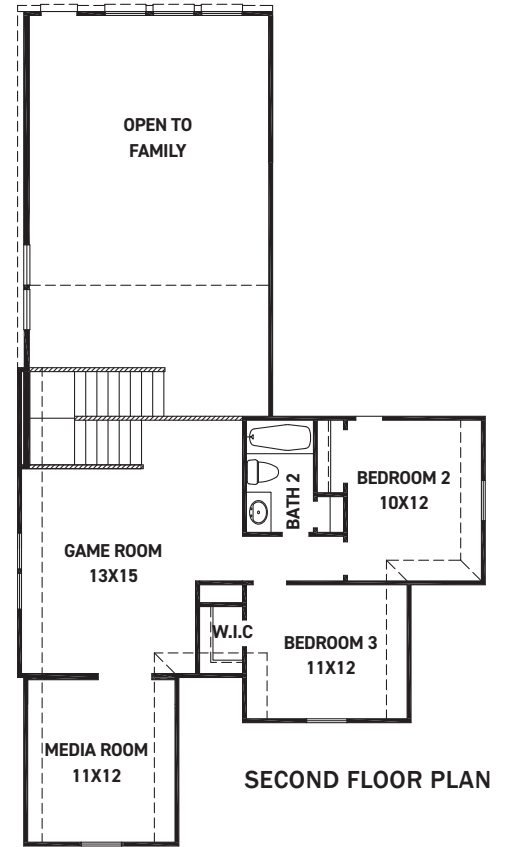
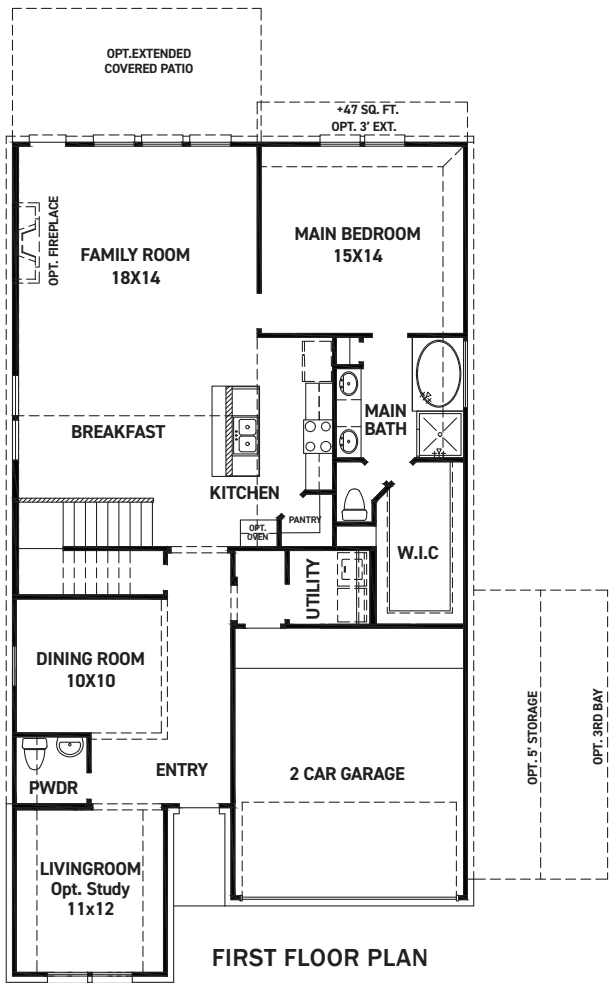
REV 04/24 (452M)



These drawings are conceptual only and are for the convenience of reference. They should not be relied upon as representations, express or implied, of the final detail of the residences. The builder expressly reserves the right to make modifications, revisions, and changes it deems desirable in its sole and absolute discretion. Dimensions and square footages are approximate and may vary with actual construction. Due to design and footage requirements not all options/elevations are available in all locations.

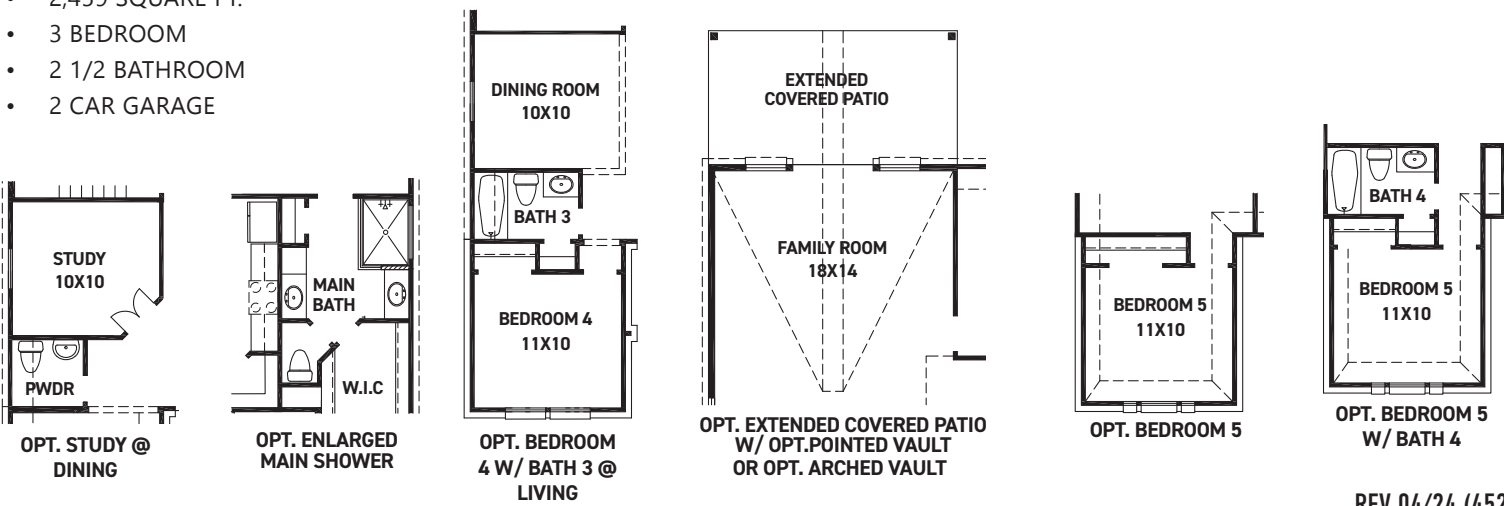


newmarkhomes.com



FEATURES:

- 2,459 SQUARE FT.
- 3 BEDROOM
- 2 1/2 BATHROOM
- 2 CAR GARAGE



REV 04/24 (452M)



These drawings are conceptual only and are for the convenience of reference. They should not be relied upon as representations, express or implied, of the final detail of the residences. The builder expressly reserves the right to make modifications, revisions, and changes it deems desirable in its sole and absolute discretion. Dimensions and square footages are approximate and may vary with actual construction. Due to design and footage requirements not all options/elevations are available in all locations.



newmarkhomes.com