



# Florence

Priced from \$578,990

Sq Ft	Beds	Baths	Stories	Garage
<b>2,434</b>	<b>4</b>	<b>3</b>	<b>1</b>	<b>3</b>

---



**ELEVATION 1**



**ELEVATION 2**



**ELEVATION 3**



**ELEVATION 4**



**ELEVATION 5**



**ELEVATION 6**

REV 04/24 (6)



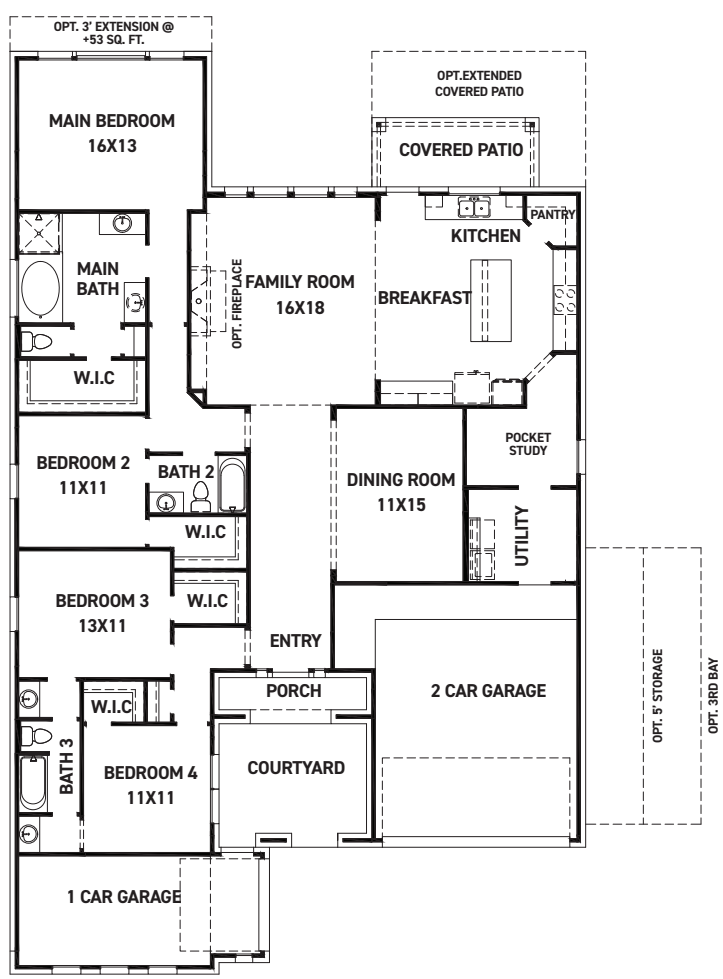
These drawings are conceptual only and are for the convenience of reference. They should not be relied upon as representations, express or implied, of the final detail of the residences. The builder expressly reserves the right to make modifications, revisions, and changes it deems desirable in its sole and absolute discretion. Dimensions and square footages are approximate and may vary with actual construction. Due to design and footage requirements not all options/elevations are available in all locations.



[newmarkhomes.com](http://newmarkhomes.com)



# Florence



FIRST FLOOR PLAN

### FEATURES:

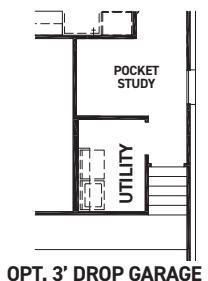
- 2,434 SQUARE FT.
- 4 BEDROOM
- 3 BATHROOM
- 3 CAR SPLIT GARAGE



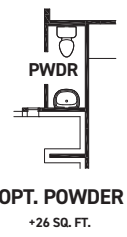
OPT. SLIDER DOOR @ BEDROOM 4



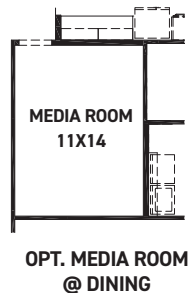
OPT. BATH 4



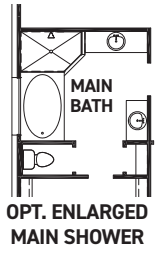
OPT. 3' DROP GARAGE



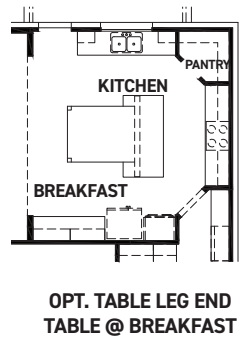
OPT. POWDER +26 SQ. FT.



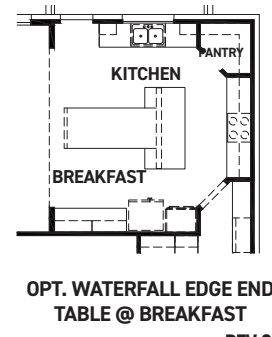
OPT. MEDIA ROOM @ DINING



OPT. ENLARGED MAIN SHOWER



OPT. TABLE LEG END TABLE @ BREAKFAST



OPT. WATERFALL EDGE END TABLE @ BREAKFAST

REV 04/24 (60)



These drawings are conceptual only and are for the convenience of reference. They should not be relied upon as representations, express or implied, of the final detail of the residences. The builder expressly reserves the right to make modifications, revisions, and changes it deems desirable in its sole and absolute discretion. Dimensions and square footages are approximate and may vary with actual construction. Due to design and footage requirements not all options/elevations are available in all locations.



[newmarkhomes.com](http://newmarkhomes.com)