



# Salzburg

Priced from \$669,990

Sq Ft	Beds	Baths	Stories	Garage
3,576	4	3	2	3



**ELEVATION 1**



**ELEVATION 2**



**ELEVATION 3**



**ELEVATION 4**



**ELEVATION 5**



**ELEVATION 6**

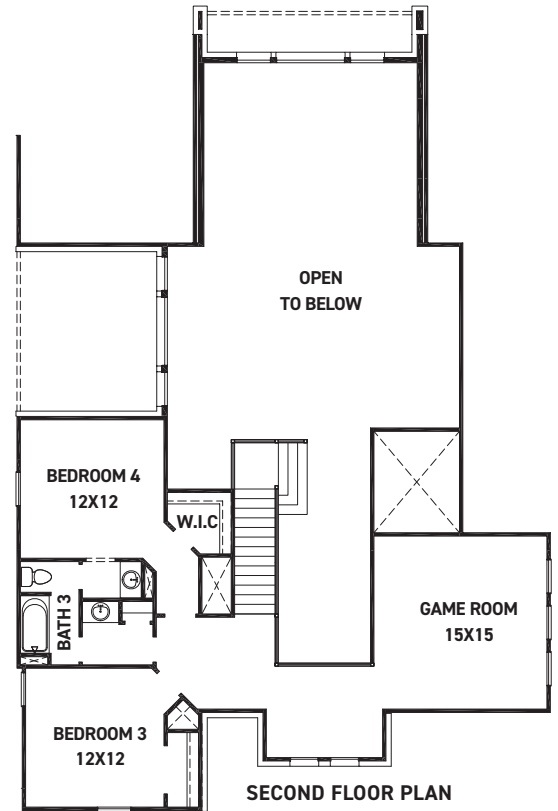
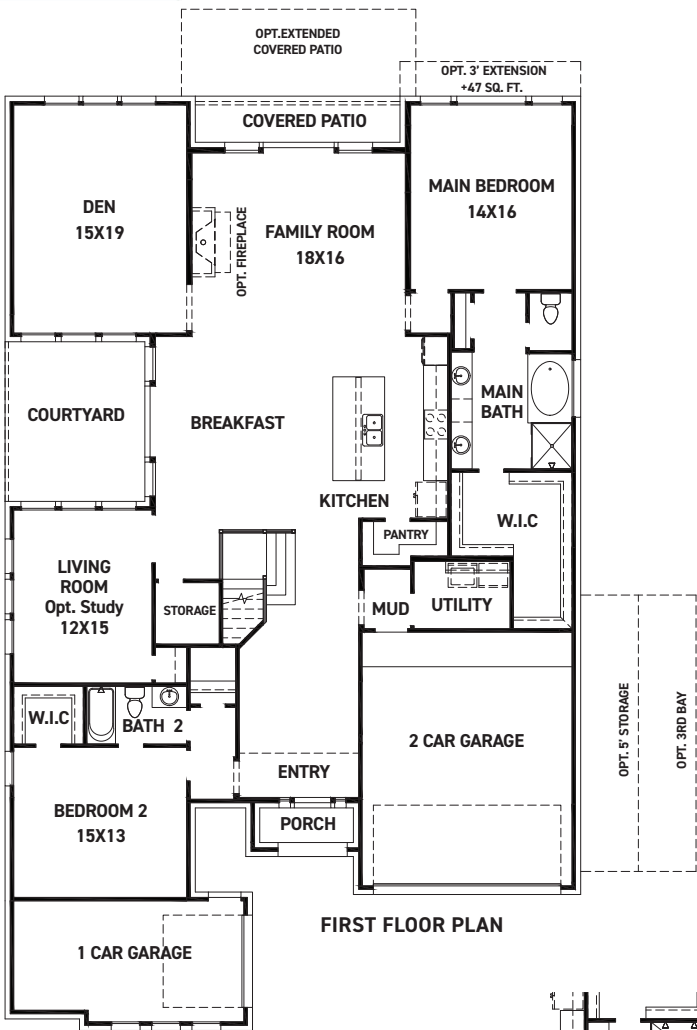
REV 04/24 (604



These drawings are conceptual only and are for the convenience of reference. They should not be relied upon as representations, express or implied, of the final detail of the residences. The builder expressly reserves the right to make modifications, revisions, and changes it deems desirable in its sole and absolute discretion. Dimensions and square footages are approximate and may vary with actual construction. Due to design and footage requirements not all options/elevations are available in all locations.

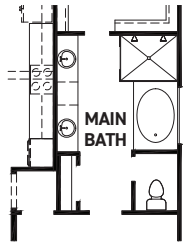


[newmarkhomes.com](http://newmarkhomes.com)

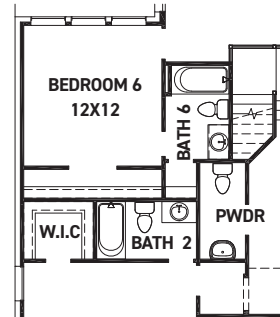


## FEATURES:

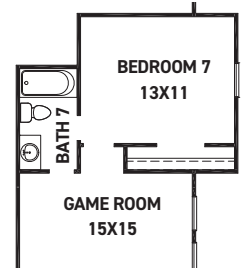
- 3576 SQUARE FT.
- 4 BEDROOM
- 3 BATHROOMS
- 3 CAR SPLIT GARAGE



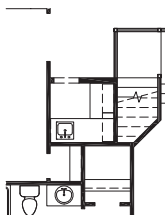
OPT. ENLARGED MAIN SHOWER



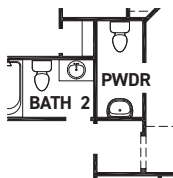
OPT. BEDROOM 6 BATH 6 POWDER ILO LIVING & STOR.



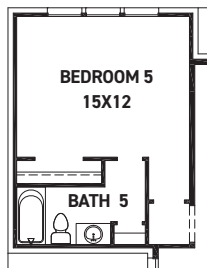
OPT. BEDROOM 7 / BATH 7 +238 SQ. FT.



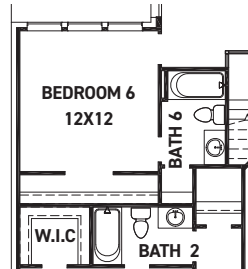
OPT. BUTLER'S BAR ILO STORAGE



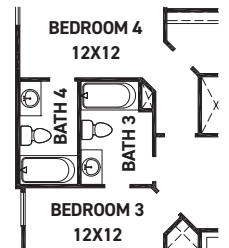
OPT. POWDER ROOM ILO STORAGE



OPT. BEDROOM 5 BATH 4 ILO DEN



OPT. BEDROOM 6 BATH 6 ILO LIVING



OPT. BATH 4

REV 04/24 (60



These drawings are conceptual only and are for the convenience of reference. They should not be relied upon as representations, express or implied, of the final detail of the residences. The builder expressly reserves the right to make modifications, revisions, and changes it deems desirable in its sole and absolute discretion. Dimensions and square footages are approximate and may vary with actual construction. Due to design and footage requirements not all options/elevations are available in all locations.



[newmarkhomes.com](http://newmarkhomes.com)