

Multi-Generational



Ravenna

Priced from \$733,990

Sq Ft	Beds	Baths	Stories	Garage
4,144	5	4.5	2	3

5 bedrooms (2 bedrooms down), 4.5 baths, 3 car garage. Elegant curved stairway off the dramatic two-story foyer. Large formal living and dining rooms flank the entry. Gourmet island kitchen opens to large family room and breakfast area. Oversized game room up. Covered patio.



Ravenna



ELEVATION 1



ELEVATION 3



ELEVATION 4



ELEVATION 5



ELEVATION 6



ELEVATION 7

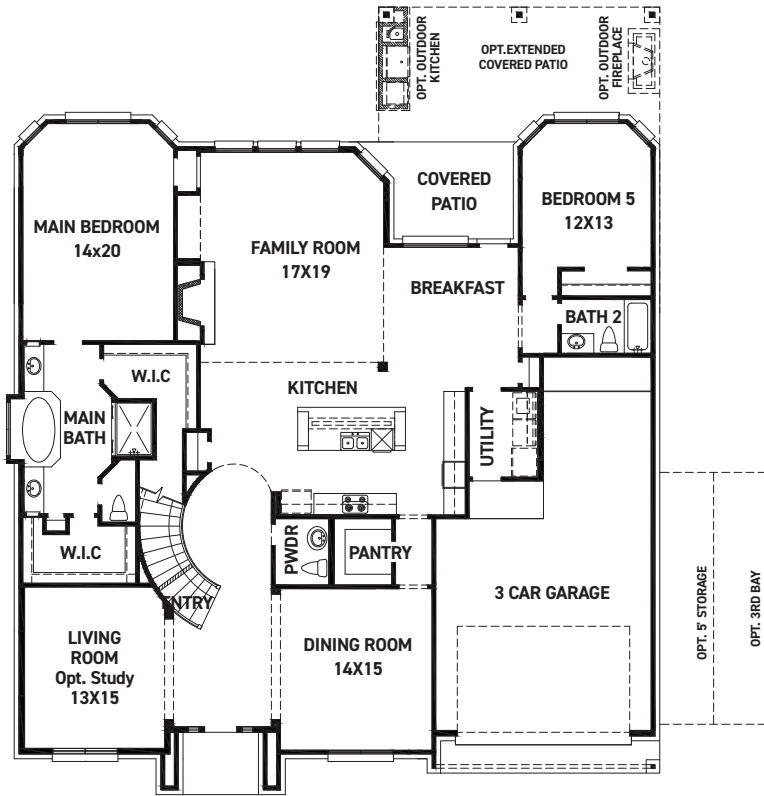
REV 06/24 (7013)



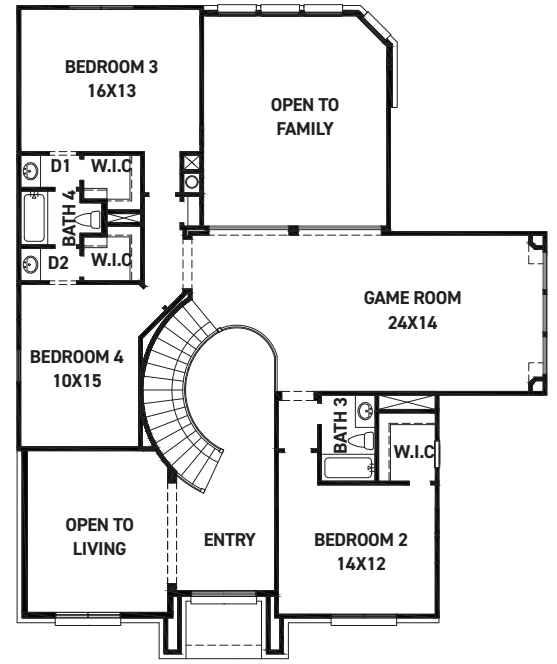
These drawings are conceptual only and are for the convenience of reference. They should not be relied upon as representations, express or implied, of the final detail of the residences. The builder expressly reserves the right to make modifications, revisions, and changes it deems desirable in its sole and absolute discretion. Dimensions and square footages are approximate and may vary with actual construction. Due to design and footage requirements not all options/elevations are available in all locations.



newmarkhomes.com



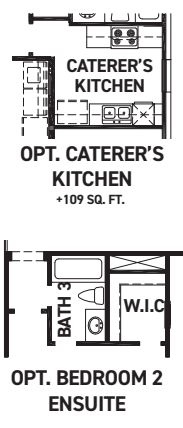
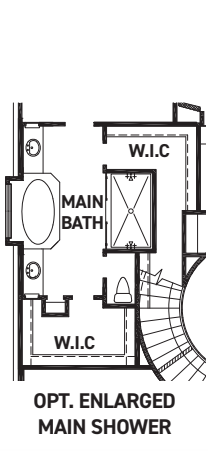
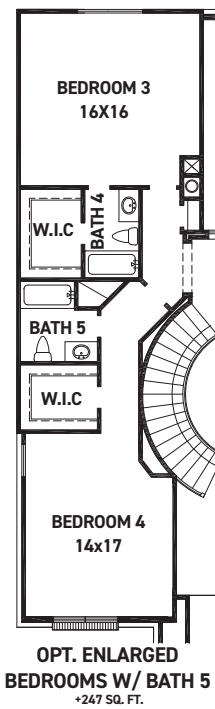
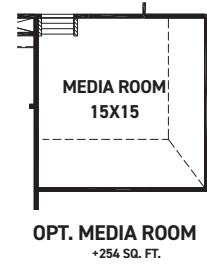
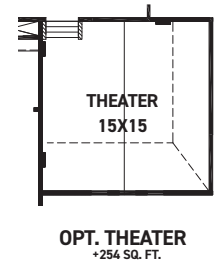
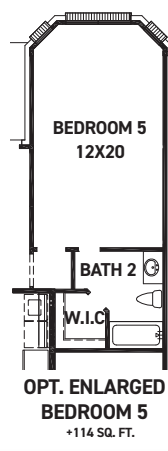
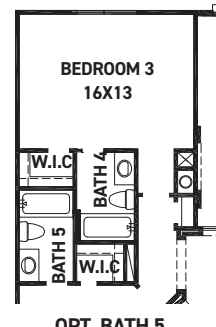
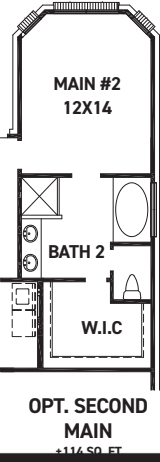
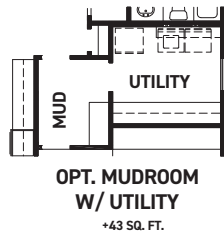
FIRST FLOOR PLAN



SECOND FLOOR PLAN

FEATURES:

- 4,144 SQUARE FT.
- 5 BEDROOM
- 4 1/2 BATHROOM
- 3 CAR GARAGE



REV 06/24 (7013)



These drawings are conceptual only and are for the convenience of reference. They should not be relied upon as representations, express or implied, of the final detail of the residences. The builder expressly reserves the right to make modifications, revisions, and changes it deems desirable in its sole and absolute discretion. Dimensions and square footages are approximate and may vary with actual construction. Due to design and footage requirements not all options/elevations are available in all locations.



newmarkhomes.com