

Multi-Generational



Castilian

Priced from \$760,990

Sq Ft	Beds	Baths	Stories	Garage
4,313	5	4.5	2	3

5 bedrooms (2 down) 4.5 baths, 3 car garage. Formal Living and Dining rooms with views of front courtyard. Large Family Room opened to spacious island kitchen and breakfast room. Main Suite with dual walk-in closets and executive bath. 3 Big bedrooms with walk-in closets, loft and... [READ MORE »](#) game room up



ELEVATION 1



ELEVATION 3



ELEVATION 4



ELEVATION 5



ELEVATION 6



ELEVATION 7

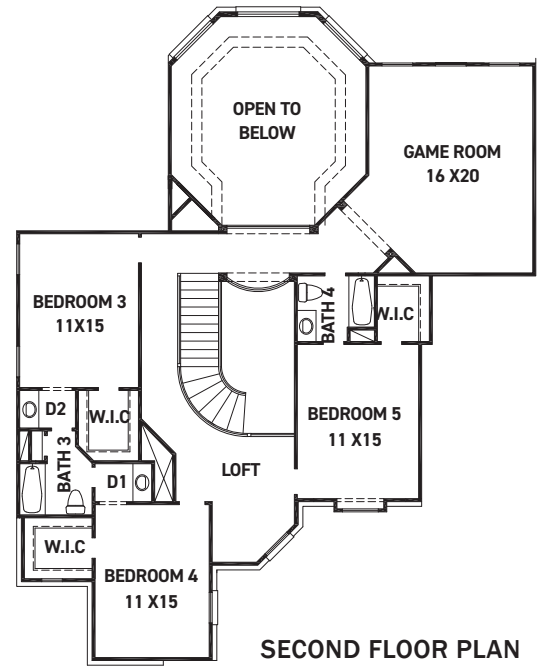
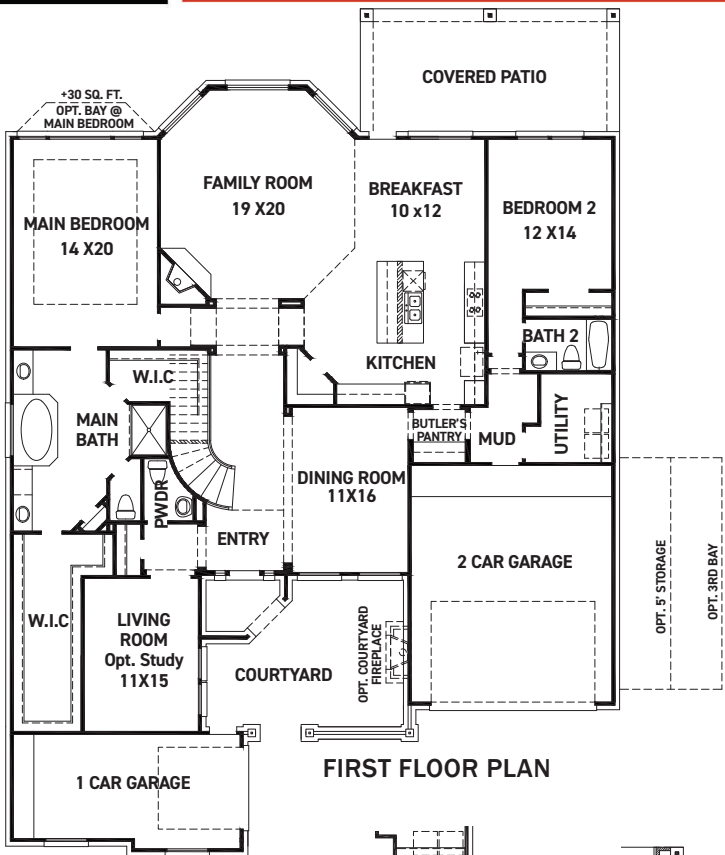
REV 06/24 (7018)



These drawings are conceptual only and are for the convenience of reference. They should not be relied upon as representations, express or implied, of the final detail of the residences. The builder expressly reserves the right to make modifications, revisions, and changes it deems desirable in its sole and absolute discretion. Dimensions and square footages are approximate and may vary with actual construction. Due to design and footage requirements not all options/elevations are available in all locations.

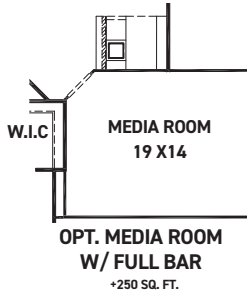
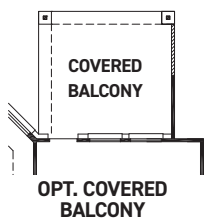
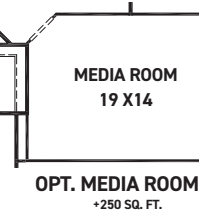
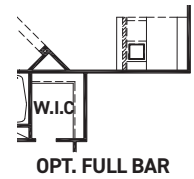
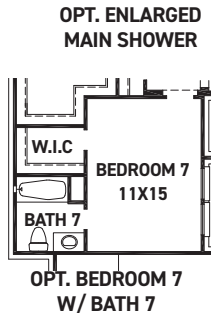
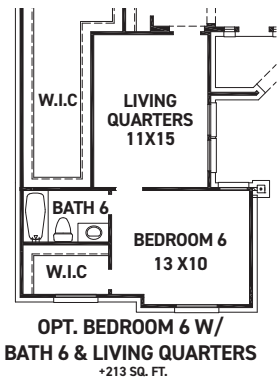
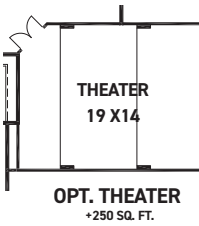
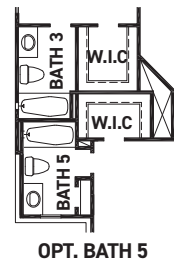
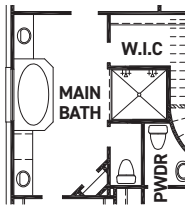
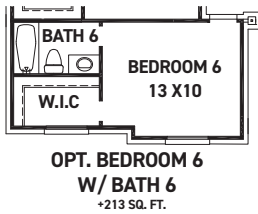
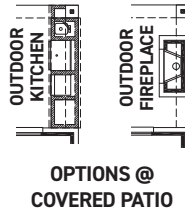
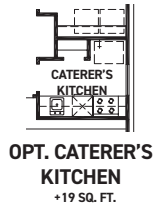


newmarkhomes.com



FEATURES:

- 4,313 SQUARE FT.
- 5 BEDROOM
- 4 1/2 BATHROOM
- 3 CAR GARAGE



REV 06/24 (7018)



These drawings are conceptual only and are for the convenience of reference. They should not be relied upon as representations, express or implied, of the final detail of the residences. The builder expressly reserves the right to make modifications, revisions, and changes it deems desirable in its sole and absolute discretion. Dimensions and square footages are approximate and may vary with actual construction. Due to design and footage requirements not all options/elevations are available in all locations.



newmarkhomes.com