



Carmel

Pricing Available Upon Request

Sq Ft	Beds	Baths	Stories	Garage
3,945	5	4.5	2	3

5 bedrooms, 4.5 baths, 3 Car attached garage. Welcoming front courtyard. Two story entry with circular staircase. Formal Dining Room. Spacious Main Suite w/big walk-in closet with access to laundry room and Guest Suite down. Expansive Great room includes Island Kitchen/Breakfast a... [READ MORE](#) »nd two-story family room. Three bedrooms with baths, Media room and large Game room up. Covered back patio.



ELEVATION 1



ELEVATION 2



ELEVATION 3



ELEVATION 4

REV 09/23 (7)

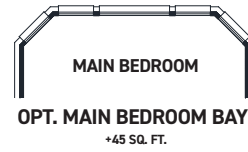
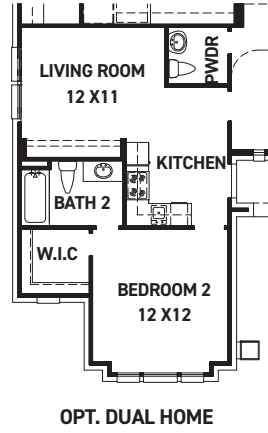
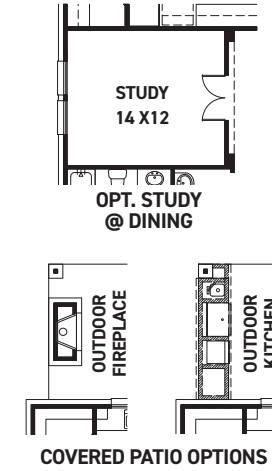
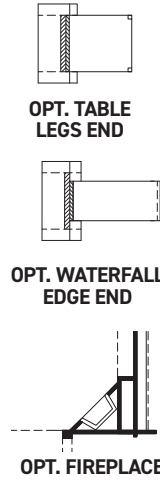
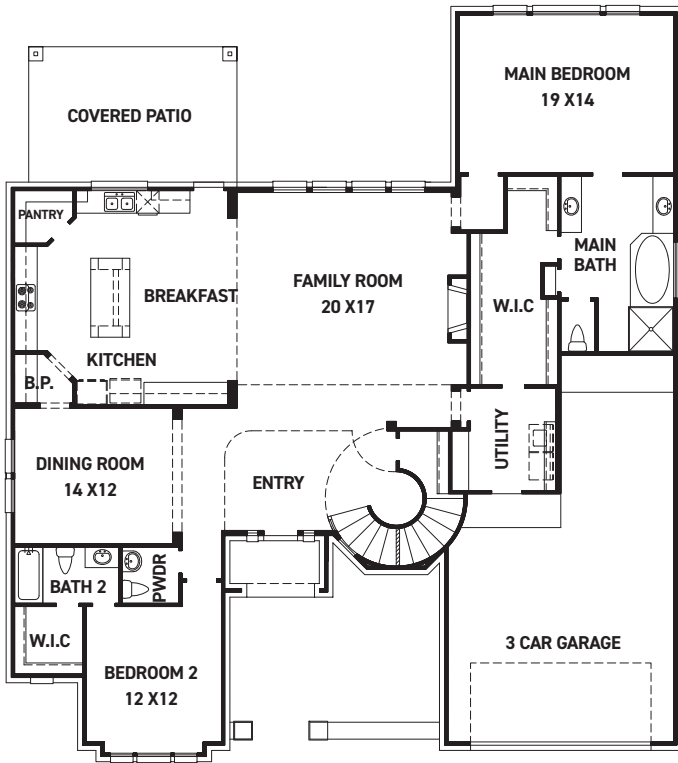


These drawings are conceptual only and are for the convenience of reference. They should not be relied upon as representations, express or implied, of the final detail of the residences. The builder expressly reserves the right to make modifications, revisions, and changes it deems desirable in its sole and absolute discretion. Dimensions and square footages are approximate and may vary with actual construction. Due to design and footage requirements not all options/elevations are available in all locations.



newmarkhomes.com

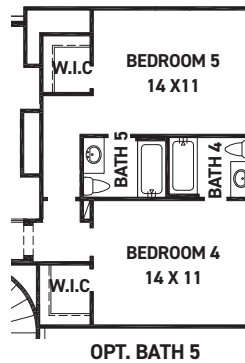
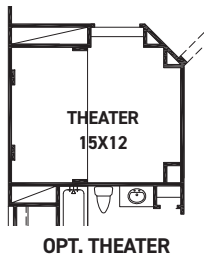
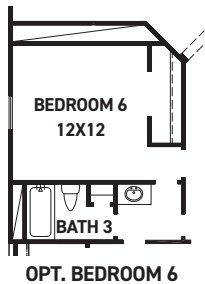
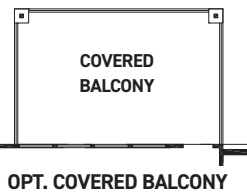
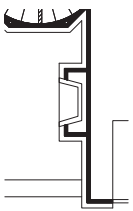
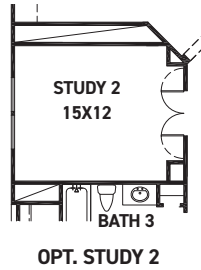
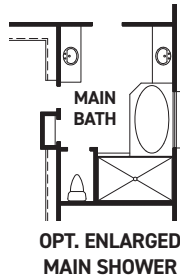
July 15, 2024



FIRST FLOOR PLAN

FEATURES:

- 3,945 SQUARE FT.
- 5 BEDROOM
- 4 1/2 BATHROOM
- 3 CAR GARAGE



REV 09/23/20



These drawings are conceptual only and are for the convenience of reference. They should not be relied upon as representations, express or implied, of the final detail of the residences. The builder expressly reserves the right to make modifications, revisions, and changes it deems desirable in its sole and absolute discretion. Dimensions and square footages are approximate and may vary with actual construction. Due to design and footage requirements not all options/elevations are available in all locations.



newmarkhomes.com