



# Tivoli



**ELEVATION 8**



**ELEVATION 1**



**ELEVATION 2**



**ELEVATION 3**



**ELEVATION 4**



**ELEVATION 5**



**ELEVATION 6**



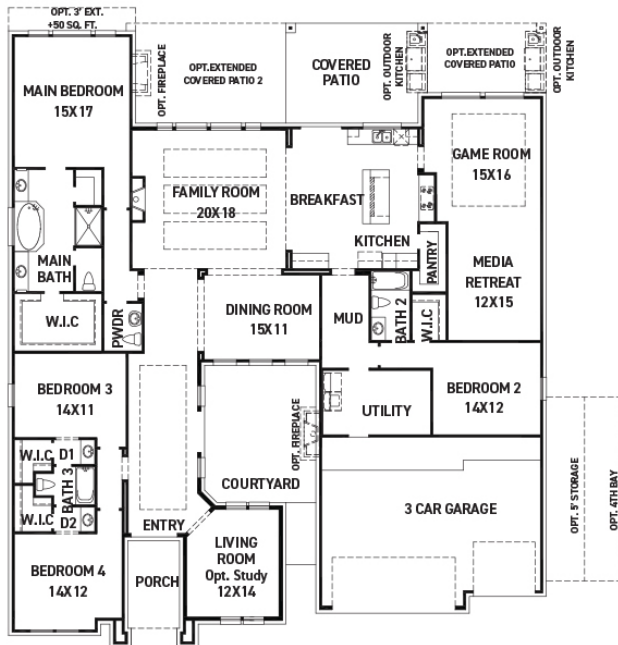
These drawings are conceptual only and are for the convenience of reference. They should not be relied upon as representations, express or implied, of the final detail of the residences. The builder expressly reserves the right to make modifications, revisions, and changes it deems desirable in its sole and absolute discretion. Dimensions and square footages are approximate and may vary with actual construction. Due to design and footage requirements not all options/elevations are available in all locations.



[newmarkhomes.com](http://newmarkhomes.com)



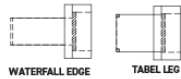
# Tivoli



FIRST FLOOR PLAN

## FEATURES:

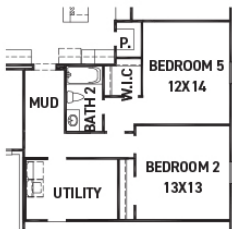
- 3718 SQUARE FT.
- 4 BEDROOM
- 3 1/2 BATHROOM
- 3 CAR GARAGE



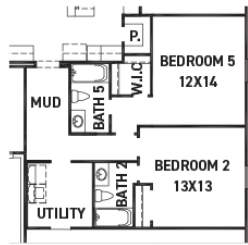
OPT. TABLE  
@BREAKFAST AREA



OPT. MEDIA ROOM 2  
ILO BEDROOM 3



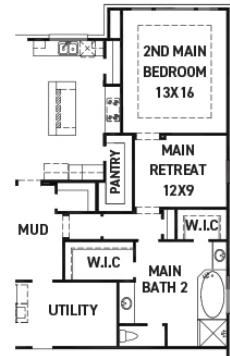
OPT. BEDROOM 5 ILO MEDIA RETREAT



OPT. BEDROOM 5/BATH 5 ILO  
MEDIA RETREAT



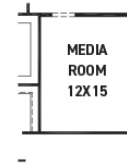
OPT. ENLARGED BEDROOM 5 ILO GAME  
ROOM & MEDIA RETREAT



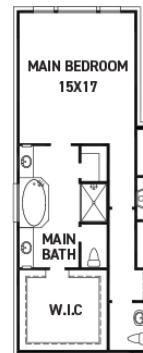
OPT. 2ND MAIN BEDROOM ILO GAME  
ROOM, MEDIA RETREAT & BEDROOM 2  
REV 01/26 (8018)



OPT. CATERER'S KITCHEN  
NOT AVAILABLE W/ BEDROOM 5 OPTIONS



OPT. MEDIA ROOM



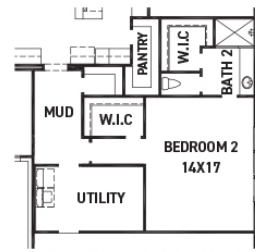
OPT. 3' EXT. @ MAIN CLOSET  
+50 SQ. FT.



OPT. ENLARGED  
MAIN SHOWER



OPT. BATH 4



OPT. ENLARGED BEDROOM 2 ILO  
MEDIA RETREAT



These drawings are conceptual only and are for the convenience of reference. They should not be relied upon as representations, express or implied, of the final detail of the residences. The builder expressly reserves the right to make modifications, revisions, and changes it deems desirable in its sole and absolute discretion. Dimensions and square footages are approximate and may vary with actual construction. Due to design and footage requirements not all options/elevations are available in all locations.



[newmarkhomes.com](http://newmarkhomes.com)