



# Sedona

Priced from \$620,990

Sq Ft	Beds	Baths	Stories	Garage
<b>2,810</b>	<b>3</b>	<b>2.5</b>	<b>2</b>	<b>2</b>

---



**ELEVATION 1**



**ELEVATION 2**



**ELEVATION 3**

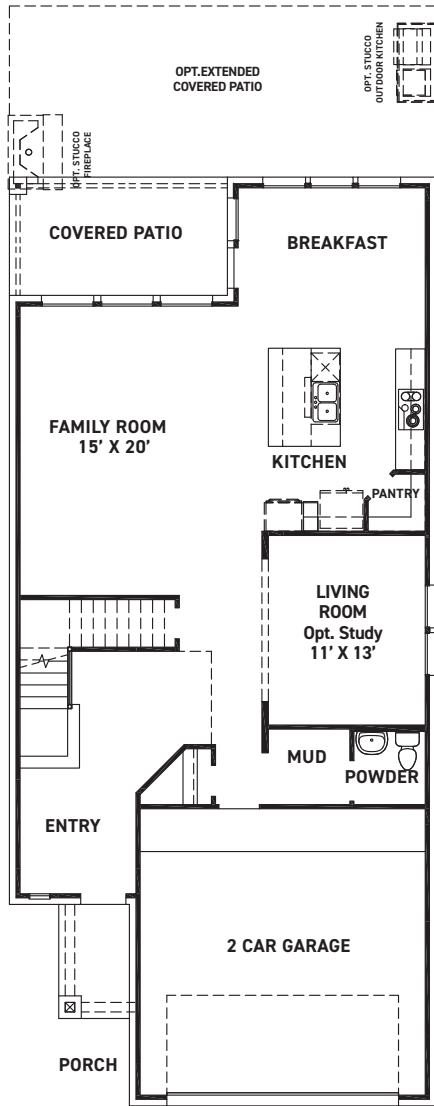
REV 06/23 (40SH)



These drawings are conceptual only and are for the convenience of reference. They should not be relied upon as representations, express or implied, of the final detail of the residences. The builder expressly reserves the right to make modifications, revisions, and changes it deems desirable in its sole and absolute discretion. Dimensions and square footages are approximate and may vary with actual construction.



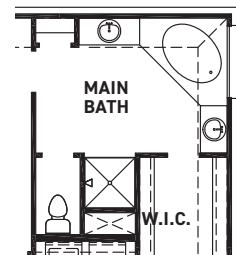
[newmarkhomes.com](http://newmarkhomes.com)



FIRST FLOOR PLAN

**FEATURES:**

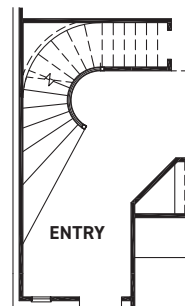
- 2810 SQUARE FT.
- 3 BEDROOM
- 2-1/2 BATHROOM
- 2 CAR GARAGE



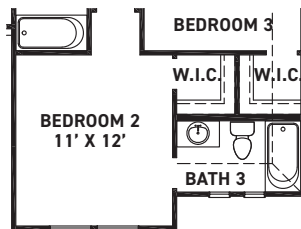
TUB @ MAIN BATH OPT.



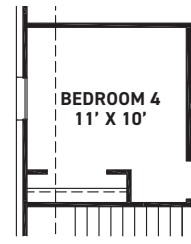
BEDROOM 5/BATH 4 OPT. I.L.O. LIVING



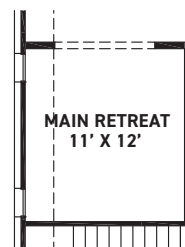
CURVED STAIRS OPT.



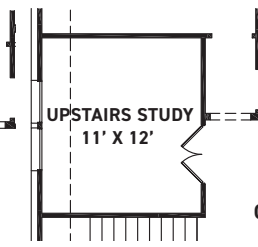
BATH 3 @ BEDROOM 2 OPT.



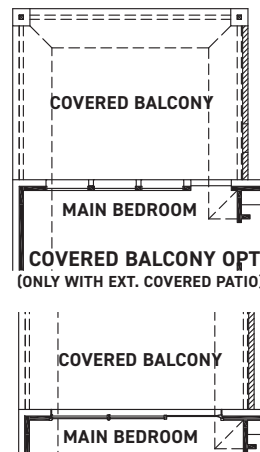
BEDROOM 4 OPT.



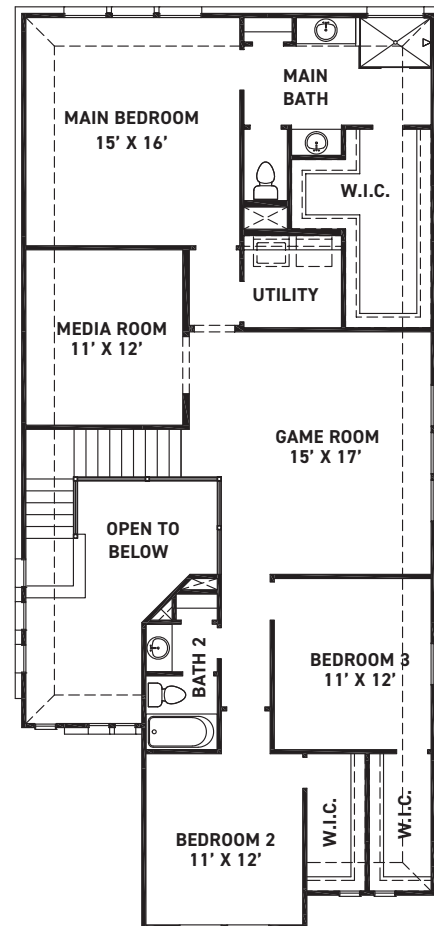
MAIN RETREAT OPT.



UPSTAIRS STUDY OPT.



REV 06/23 (40SH)



SECOND FLOOR PLAN



These drawings are conceptual only and are for the convenience of reference. They should not be relied upon as representations, express or implied, of the final detail of the residences. The builder expressly reserves the right to make modifications, revisions, and changes it deems desirable in its sole and absolute discretion. Dimensions and square footages are approximate and may vary with actual construction.