



Alpine

Priced from \$586,990

Sq Ft	Beds	Baths	Stories	Garage
2,507	3	2.5	2	2



Alpine



ELEVATION 1



ELEVATION 2



ELEVATION 3

REV 6/23 (40SI)



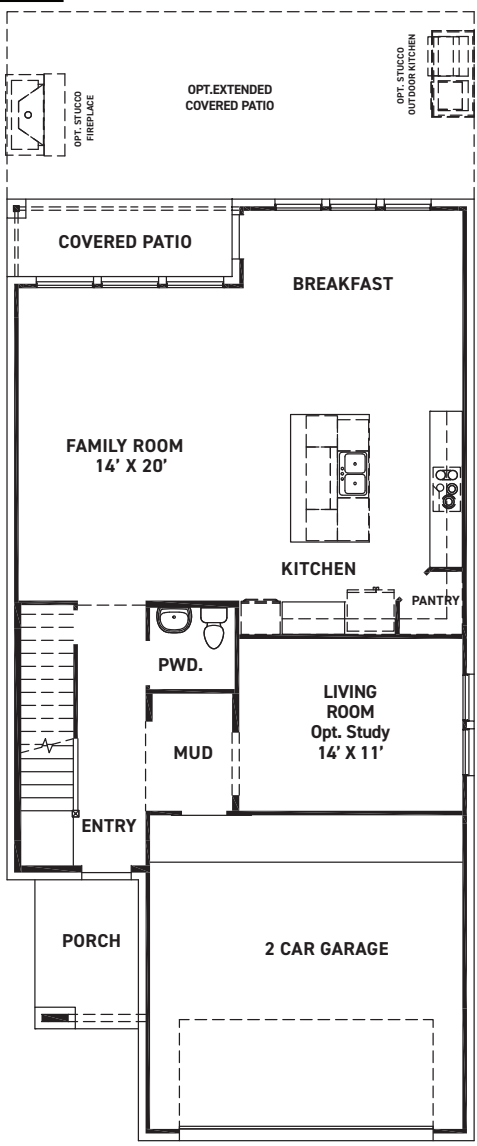
These drawings are conceptual only and are for the convenience of reference. They should not be relied upon as representations, express or implied, of the final detail of the residences. The builder expressly reserves the right to make modifications, revisions, and changes it deems desirable in its sole and absolute discretion. Dimensions and square footages are approximate and may vary with actual construction.



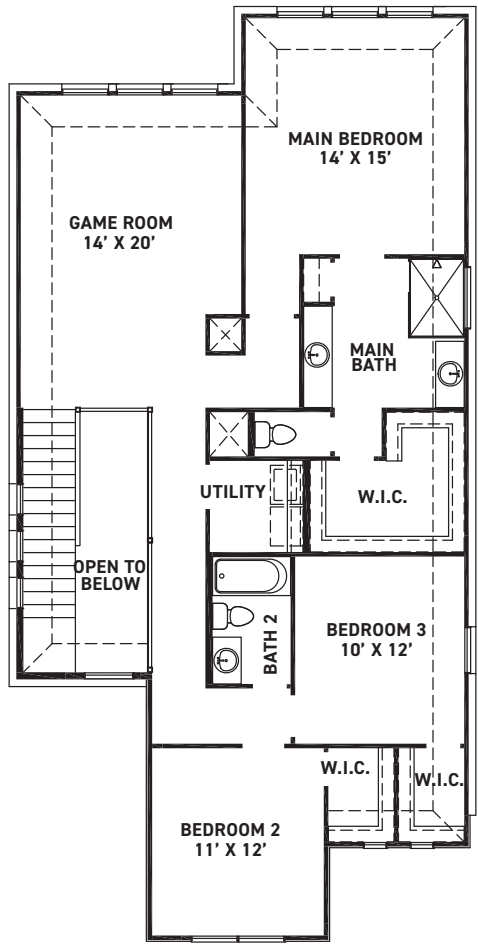
newmarkhomes.com



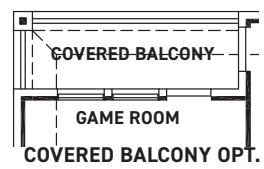
Alpine



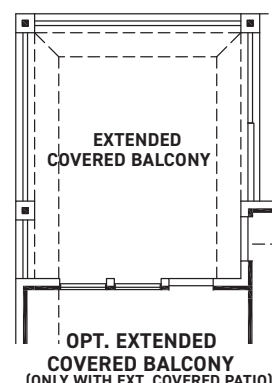
FIRST FLOOR PLAN



SECOND FLOOR PLAN



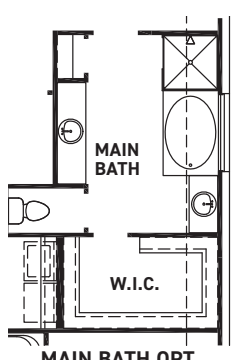
COVERED BALCONY OPT.



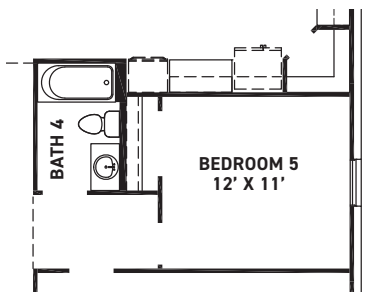
OPT. EXTENDED COVERED BALCONY (ONLY WITH EXT. COVERED PATIO)

FEATURES:

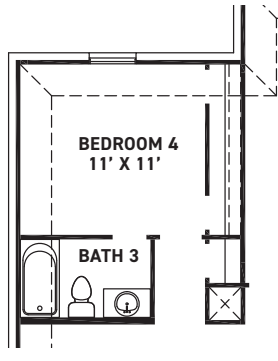
- 2507 SQUARE FT.
- 3 BEDROOM
- 2-1/2 BATHROOM
- 2 CAR GARAGE



MAIN BATH OPT.



OPT. BEDROOM 5/BATH 4



BEDROOM 4/BATH 3 OPT.



These drawings are conceptual only and are for the convenience of reference. They should not be relied upon as representations, express or implied, of the final detail of the residences. The builder expressly reserves the right to make modifications, revisions, and changes it deems desirable in its sole and absolute discretion. Dimensions and square footages are approximate and may vary with actual construction.



newmarkhomes.com