



Newton

Priced from \$629,990

Sq Ft	Beds	Baths	Stories	Garage
2,528	3	2.5	2	3



ELEVATION A



ELEVATION B



ELEVATION C



ELEVATION D



ELEVATION E

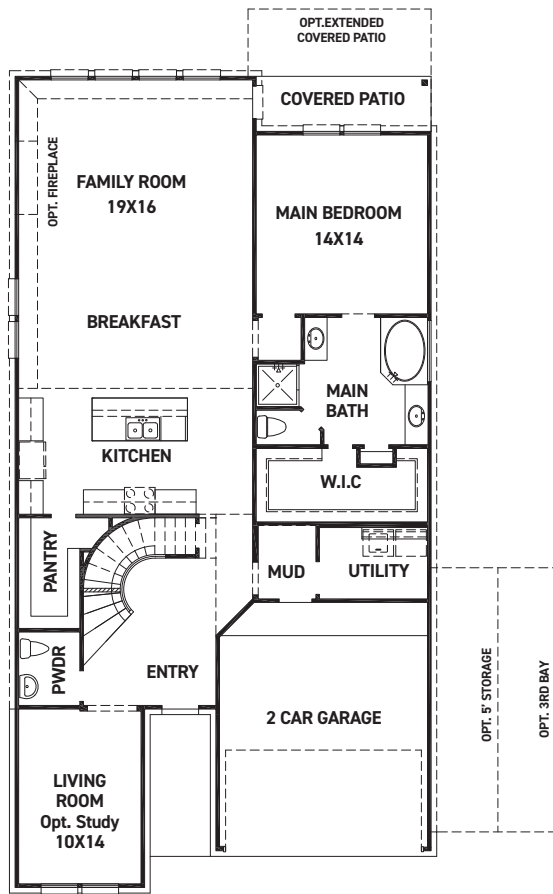
REV 03/23 (453N)



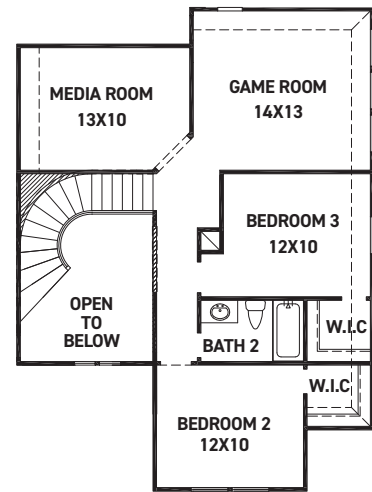
These drawings are conceptual only and are for the convenience of reference. They should not be relied upon as representations, express or implied, of the final detail of the residences. The builder expressly reserves the right to make modifications, revisions, and changes it deems desirable in its sole and absolute discretion. Dimensions and square footages are approximate and may vary with actual construction. Due to design and footage requirements not all options/elevations are available in all locations.



newmarkhomes.com



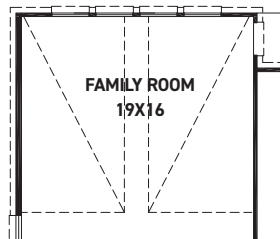
FIRST FLOOR PLAN



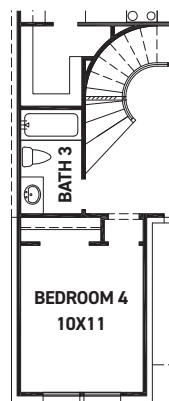
SECOND FLOOR PLAN

FEATURES:

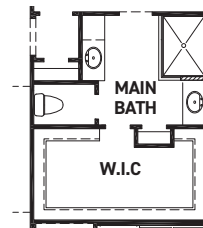
- 2,567 SQUARE FT.
- 3 BEDROOM
- 2 1/2 BATHROOM
- 2 CAR GARAGE



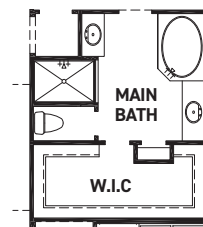
OPT. POINTED VAULT
OPT. ARCHED VAULT



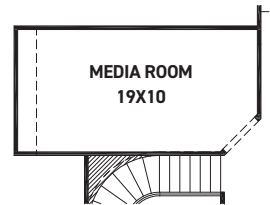
OPT. BEDROOM 4
W/ BATH 3



OPT. MAIN BATH
LAYOUT W/ ENLARGED
SHOWER



OPT. ENLARGED MAIN
SHOWER W/ TUB



OPT. EXTENDED
MEDIA ROOM
+66 SQ.



OPT. BEDROOM 5
@ MEDIA ROOM
+66 SQ.

REV 03/23 (453)



These drawings are conceptual only and are for the convenience of reference. They should not be relied upon as representations, express or implied, of the final detail of the residences. The builder expressly reserves the right to make modifications, revisions, and changes it deems desirable in its sole and absolute discretion. Dimensions and square footages are approximate and may vary with actual construction. Due to design and footage requirements not all options/elevations are available in all locations.



newmarkhomes.com