



Heidelberg

Priced from \$469,990

| Sq Ft | Beds | Baths | Stories | Garage |
|--------------|----------|------------|----------|----------|
| 2,799 | 4 | 3.5 | 2 | 2 |

4 bedrooms, 3.5 baths, 2 car garage. Formal Living Room and Dining room off entry. Two story family room with wall of windows opens to spacious island kitchen and breakfast area. Game room upstairs.



ELEVATION 1



ELEVATION 2



ELEVATION 3



ELEVATION 4 (ANTHEM USE 5)

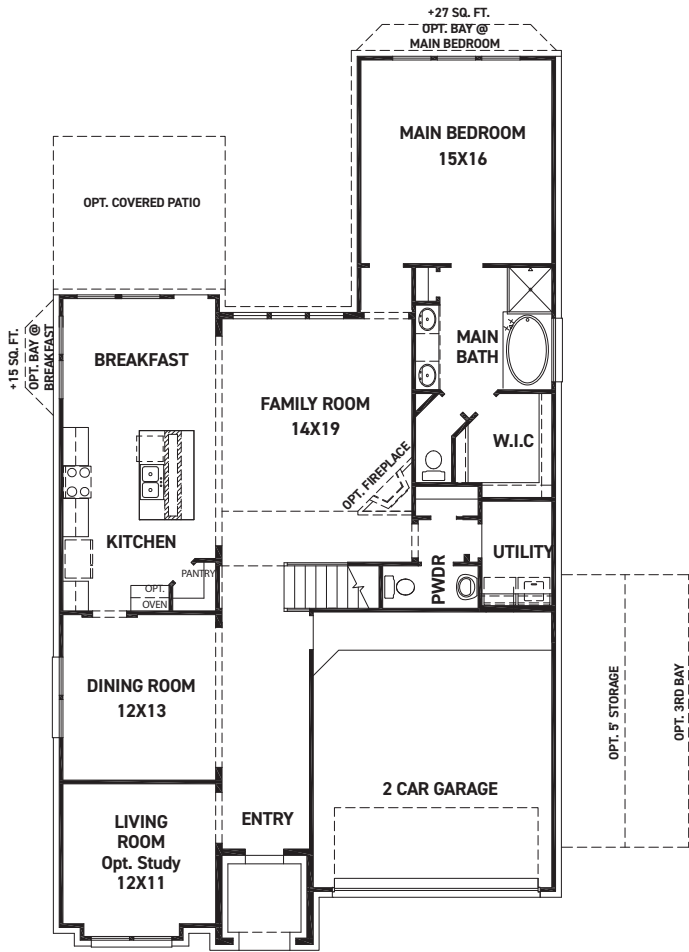
REV 07/23 (501)



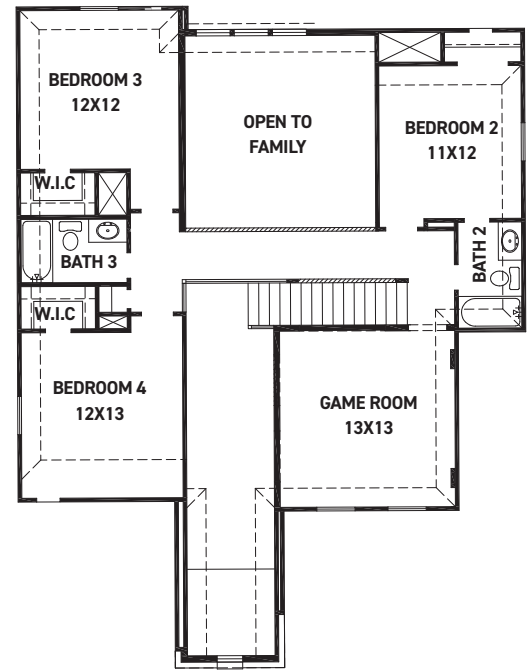
These drawings are conceptual only and are for the convenience of reference. They should not be relied upon as representations, express or implied, of the final detail of the residences. The builder expressly reserves the right to make modifications, revisions, and changes it deems desirable in its sole and absolute discretion. Dimensions and square footages are approximate and may vary with actual construction.



newmarkhomes.com



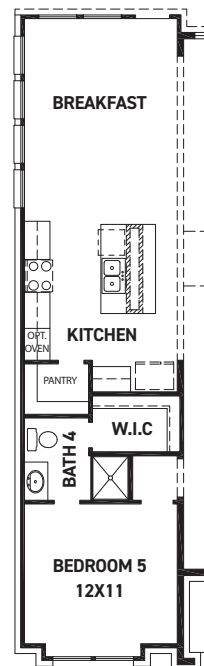
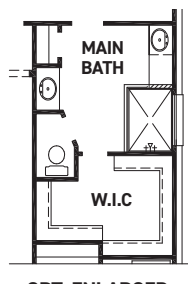
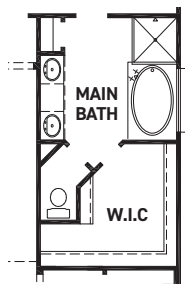
FIRST FLOOR PLAN



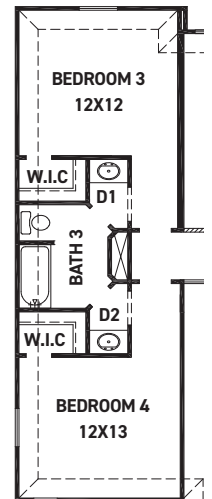
SECOND FLOOR PLAN

FEATURES:

- 2,799 SQUARE FT.
- 4 BEDROOM
- 3 1/2 BATHROOM
- 2 CAR GARAGE



OPT. BEDROOM 5 W/ BATH 4 & EXTENDED BREAKFAST



OPT. JACK & JILL BATHROOM

REV 07/23 (5010)



These drawings are conceptual only and are for the convenience of reference. They should not be relied upon as representations, express or implied, of the final detail of the residences. The builder expressly reserves the right to make modifications, revisions, and changes it deems desirable in its sole and absolute discretion. Dimensions and square footages are approximate and may vary with actual construction.



newmarkhomes.com