



Koblentz

Priced from \$467,990

Sq Ft	Beds	Baths	Stories	Garage
2,762	4	3	2	3

The Koblentz floor plan by Newmark Homes features 2,762 sqft, 4 bedrooms, 3 bathrooms, and a 3-car garage.



ELEVATION 1



ELEVATION 2



ELEVATION 3 (ANTHEM USE 9)



ELEVATION 4



ELEVATION 5

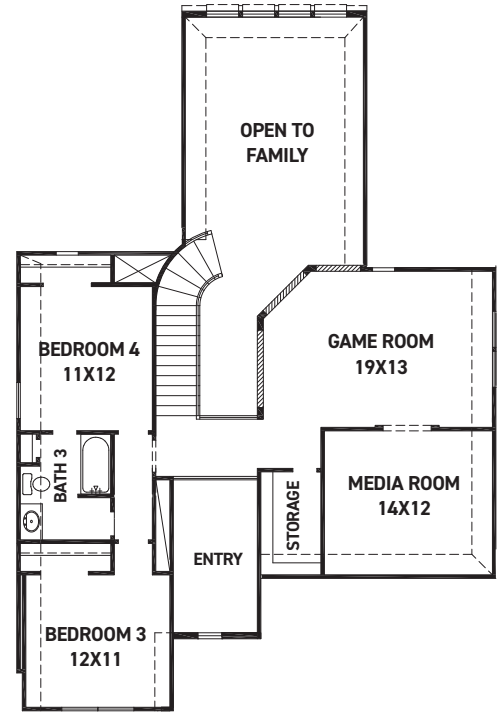
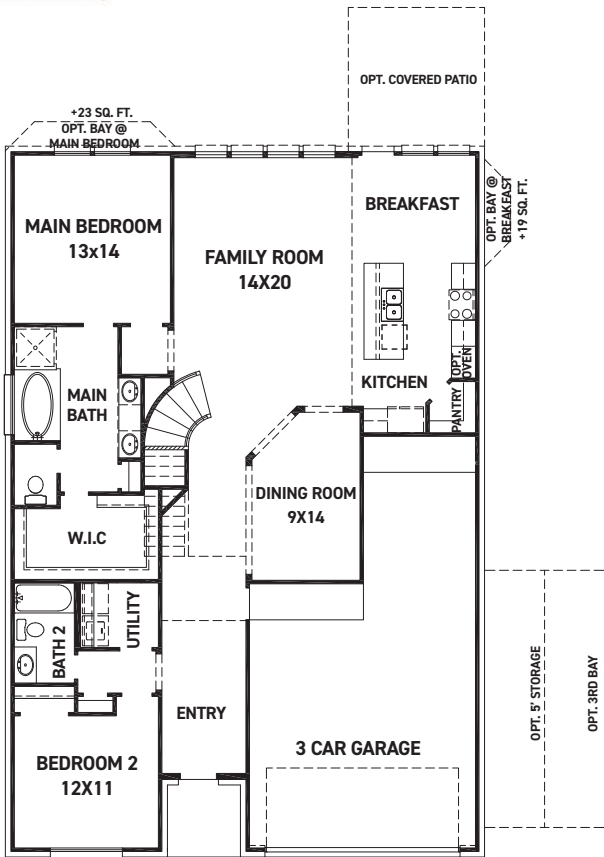
REV 07/23 (5016)A



These drawings are conceptual only and are for the convenience of reference. They should not be relied upon as representations, express or implied, of the final detail of the residences. The builder expressly reserves the right to make modifications, revisions, and changes it deems desirable in its sole and absolute discretion. Dimensions and square footages are approximate and may vary with actual construction. Due to design and footage requirements not all options/elevations are available in all locations.

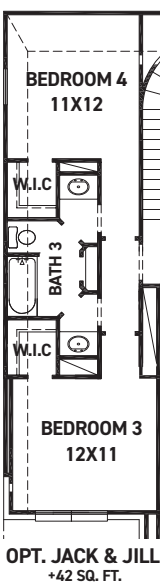
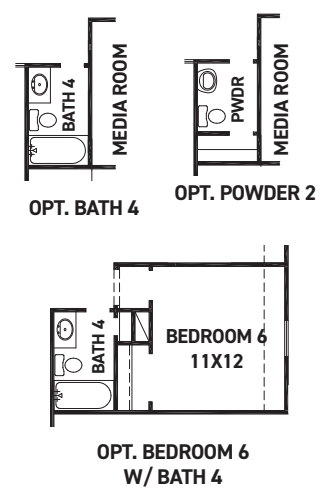
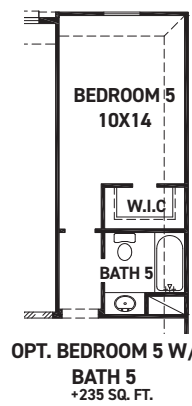
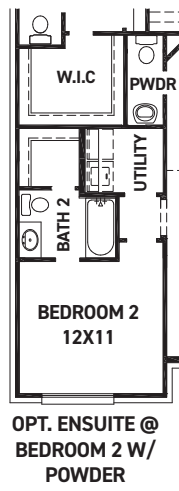
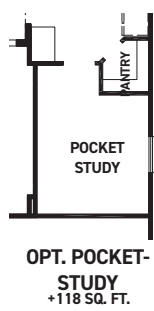
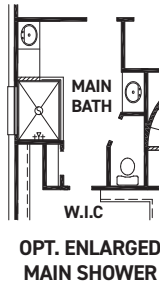
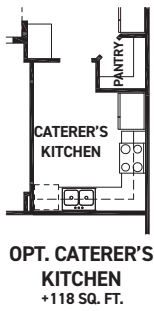
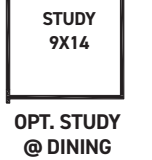
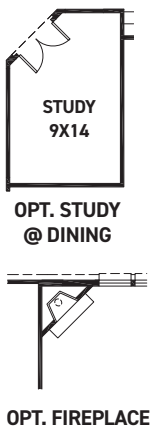


newmarkhomes.com



FEATURES:

- 2,762 SQUARE FT.
- 4 BEDROOM
- 3 BATHROOM
- 3 CAR GARAGE



REV 07/23 (5016)



These drawings are conceptual only and are for the convenience of reference. They should not be relied upon as representations, express or implied, of the final detail of the residences. The builder expressly reserves the right to make modifications, revisions, and changes it deems desirable in its sole and absolute discretion. Dimensions and square footages are approximate and may vary with actual construction. Due to design and footage requirements not all options/elevations are available in all locations.



newmarkhomes.com