



Vanilla Bean

Priced from \$579,990

Sq Ft	Beds	Baths	Stories	Garage
3,020	4	3	2	2

The Vanilla Bean plan features 3,020 sqft, 4 bedrooms, 3 bathrooms, and a 2-car garage. Download floor plans to see available options including optional extended covered patio, optional master bath, optional master bay window, and media room.



Provence

Vanilla Bean



ELEVATION A



ELEVATION C



ELEVATION D

REV 8/21 (50)

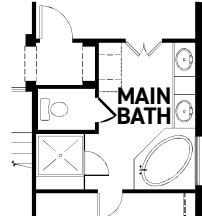
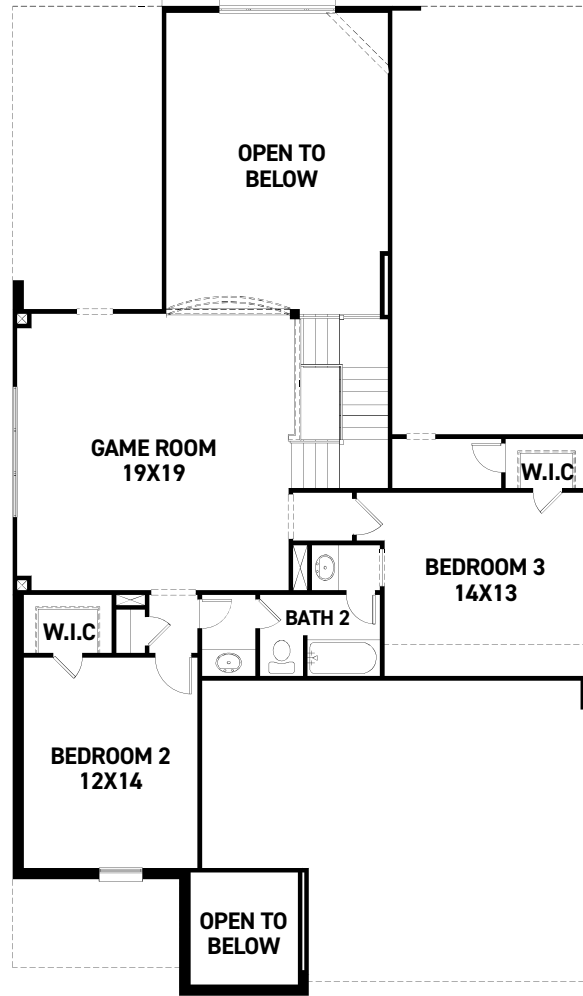
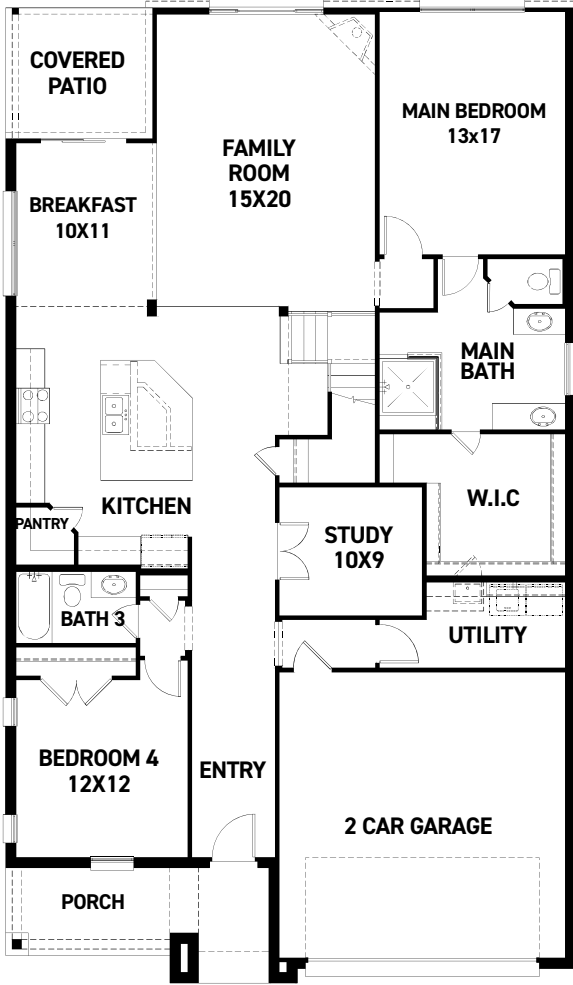


These drawings are conceptual only and are for the convenience of reference. They should not be relied upon as representations, express or implied, of the final detail of the residences. The builder expressly reserves the right to make modifications, revisions, and changes it deems desirable in its sole and absolute discretion. Dimensions and square footages are approximate and may vary with actual construction.

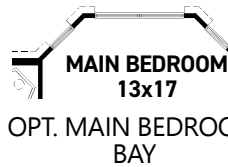


newmarkhomes.com

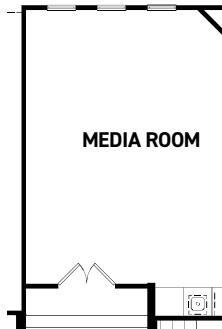
November 23, 2024



OPT. ENLARGED MAIN BATH



OPT. MAIN BEDROOM BAY



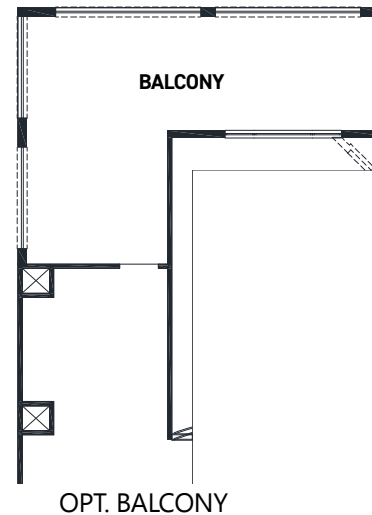
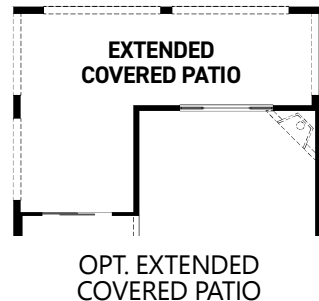
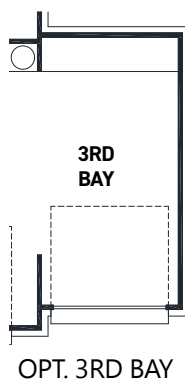
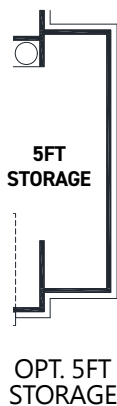
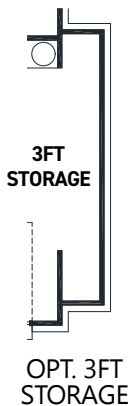
OPT. MEDIA ROOM

FIRST FLOOR PLAN

SECOND FLOOR PLAN

FEATURES:

- 3,020 SQUARE FT.
- 4 BEDROOM
- 3 BATHROOM
- 2 CAR GARAGE



REV 8/21 (503



These drawings are conceptual only and are for the convenience of reference. They should not be relied upon as representations, express or implied, of the final detail of the residences. The builder expressly reserves the right to make modifications, revisions, and changes it deems desirable in its sole and absolute discretion. Dimensions and square footages are approximate and may vary with actual construction.



newmarkhomes.com