



Georgian

Priced from \$410,990

| | | | | |
|-------|------|-------|---------|--------|
| Sq Ft | Beds | Baths | Stories | Garage |
| 2,173 | 3 | 2.5 | 1 | 2 |



ELEVATION 4



ELEVATION 5



ELEVATION 6



ELEVATION 7 (ANTHEM USE 9)



ELEVATION 8 (ANTHEM USE 10)

REV 07/23(503

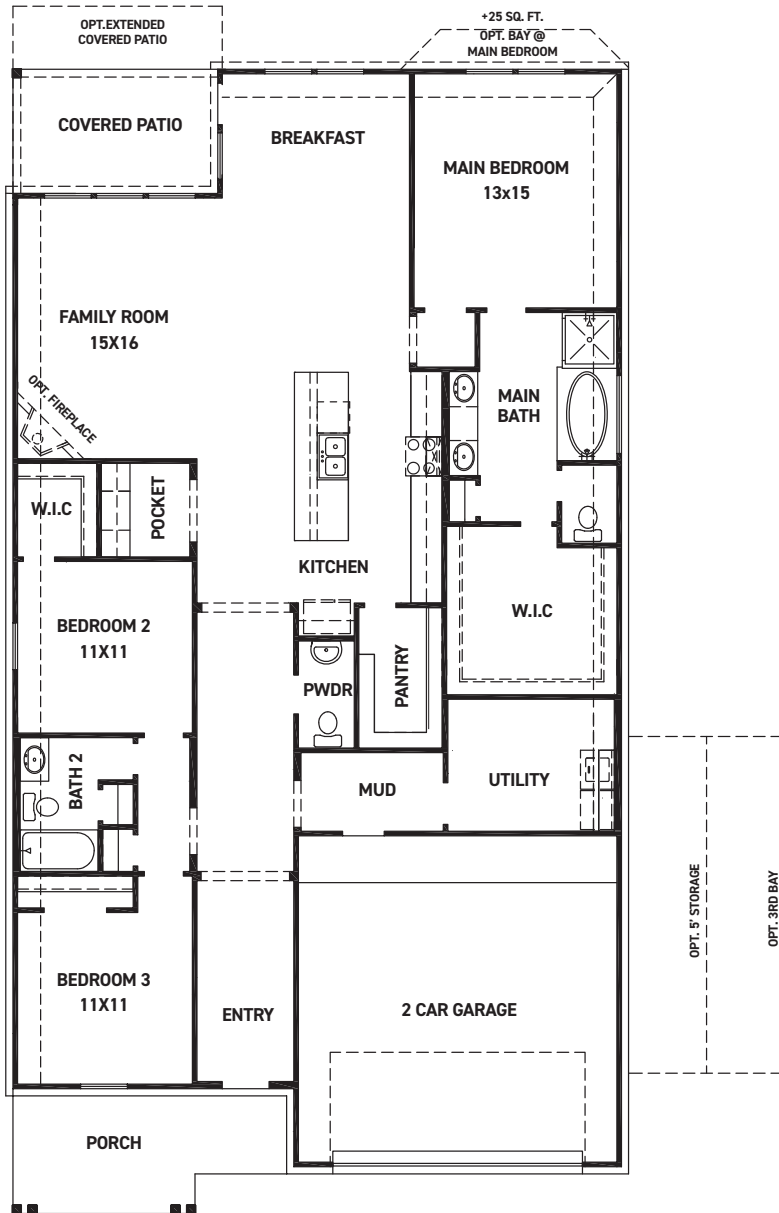


These drawings are conceptual only and are for the convenience of reference. They should not be relied upon as representations, express or implied, of the final detail of the residences. The builder expressly reserves the right to make modifications, revisions, and changes it deems desirable in its sole and absolute discretion. Dimensions and square footages are approximate and may vary with actual construction. Due to design and footage requirements not all options/elevations are available in all locations.

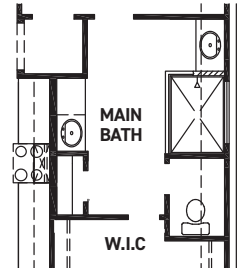


newmarkhomes.com

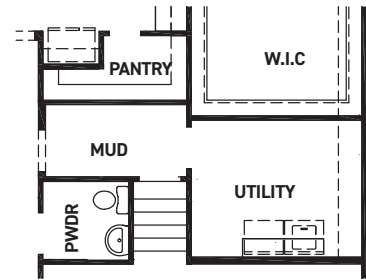
April 23, 2024



FIRST FLOOR PLAN



OPT. ENLARGED MAIN SHOWER



STAIRS FOR DROP GARAGE OPT.

FEATURES:

- 2,173 SQUARE FT.
- 3 BEDROOM
- 2 1/2 BATHROOM
- 2 CAR GARAGE

REV 07/23 (5036)



These drawings are conceptual only and are for the convenience of reference. They should not be relied upon as representations, express or implied, of the final detail of the residences. The builder expressly reserves the right to make modifications, revisions, and changes it deems desirable in its sole and absolute discretion. Dimensions and square footages are approximate and may vary with actual construction. Due to design and footage requirements not all options/elevations are available in all locations.



newmarkhomes.com

April 23, 2024