



# Lady Bird

Priced from \$779,490

Sq Ft	Beds	Baths	Stories	Garage
3,569	5	4	2	3

# N

## HIGHLAND TERRACE at Rough Hollow

# Lady Bird



ELEVATION 5



ELEVATION 9



ELEVATION 10

REV 7/20 (60



These drawings are conceptual only and are for the convenience of reference. They should not be relied upon as representations, express or implied, of the final detail of the residences. The builder expressly reserves the right to make modifications, revisions, and changes it deems desirable in its sole and absolute discretion. Dimensions and square footages are approximate and may vary with actual construction.

**NEW MARK**  
HOMES

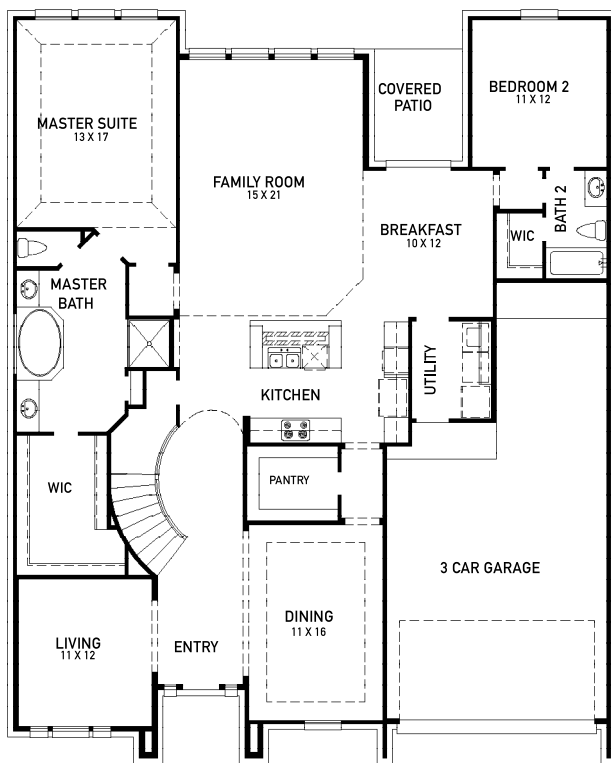
[newmarkhomes.com](http://newmarkhomes.com)

March 28, 2024

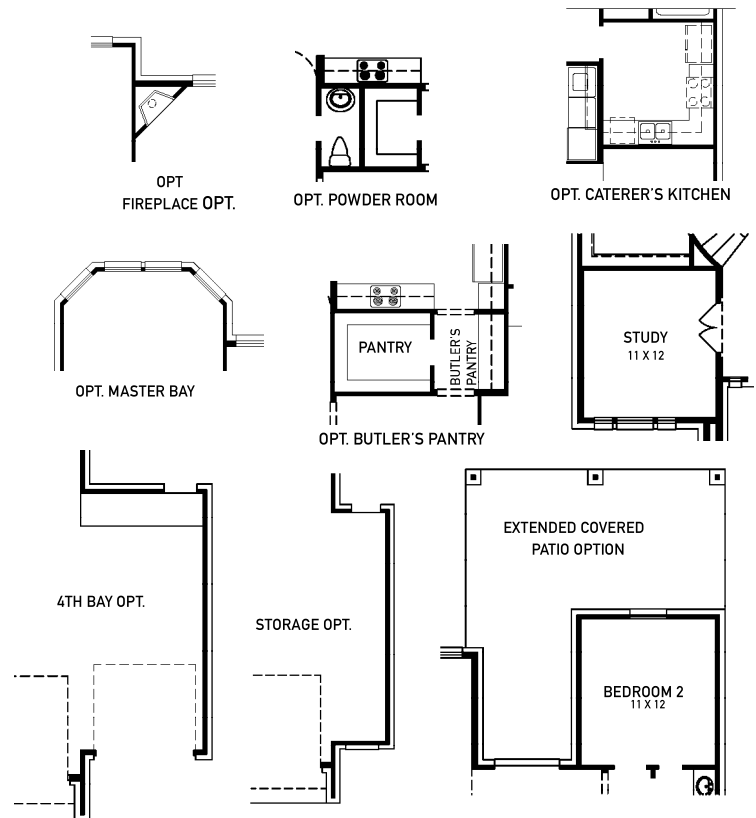
# N

# HIGHLAND TERRACE at Rough Hollow

# Lady Bird

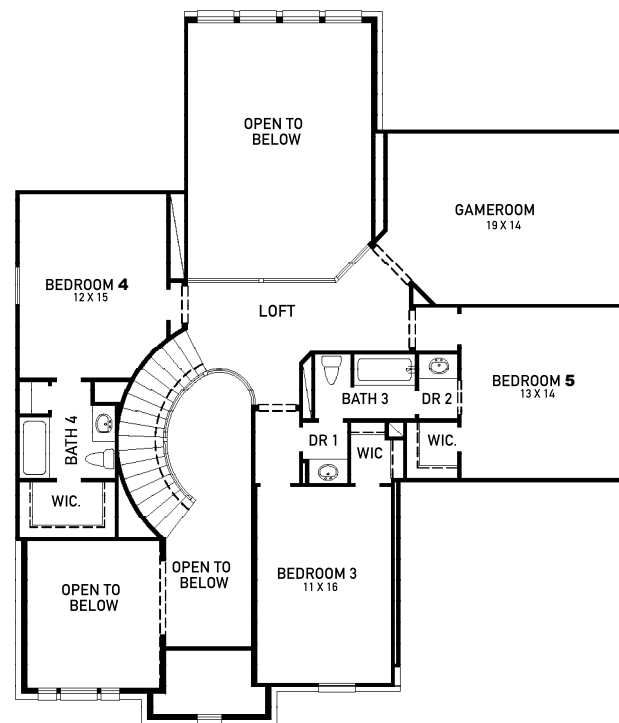
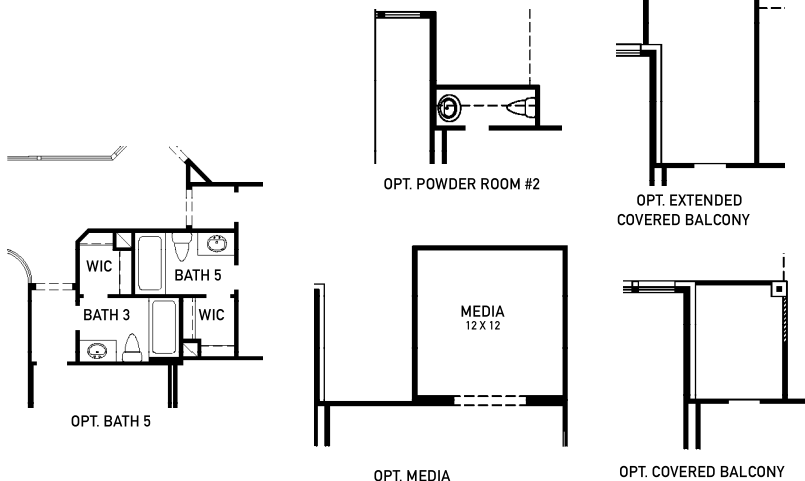


FIRST FLOOR



## FEATURES:

- 3,569 SQUARE FT.
- 5 BEDROOM
- 4 BATHROOM
- 3 CAR GARAGE



SECOND FLOOR

REV 7/20 (60



These drawings are conceptual only and are for the convenience of reference. They should not be relied upon as representations, express or implied, of the final detail of the residences. The builder expressly reserves the right to make modifications, revisions, and changes it deems desirable in its sole and absolute discretion. Dimensions and square footages are approximate and may vary with actual construction.

**NEW MARK**  
HOMES

[newmarkhomes.com](http://newmarkhomes.com)

March 28, 2024