

Just Reduced



14006 Dorado Pointe Drive

Cypress, TX 77433 | MLS #79546875
\$849,950

Sq Ft	Beds	Baths	Stories	Garage
3,808	4	3.5	1	3

The NEW TALLIN plan with dramatic foyer and high ceilings make this home a show stopper! Formal dining and study with windows overlooking the enclosed courtyard for sophisticated indoor/outdoor entertaining. A cook's dream kitchen comb... [READ MORE »](#)

Plan Your Visit

Dunham Pointe 70' Model
Monterey Plan
Model Now Open!
20423 Via Casa Laura Drive
Cypress, Texas 77429

MODEL HOME HOURS
Monday to Saturday: 10 a.m. - 6 p.m.
Sunday: 12 p.m. - 6 p.m.

Community Sales Manager
Celeste Valdez
[832-646-2527](tel:832-646-2527)
cvaldez@newmarkhomes.com
Mimi Ortiz
[\(713\) 269-9433](tel:713-269-9433)
mortiz@newmarkhomes.com



ELEVATION 1



ELEVATION 2



ELEVATION 3



ELEVATION 4



ELEVATION 5



ELEVATION 6



ELEVATION 7



ELEVATION 8

REV 01/24 (7)

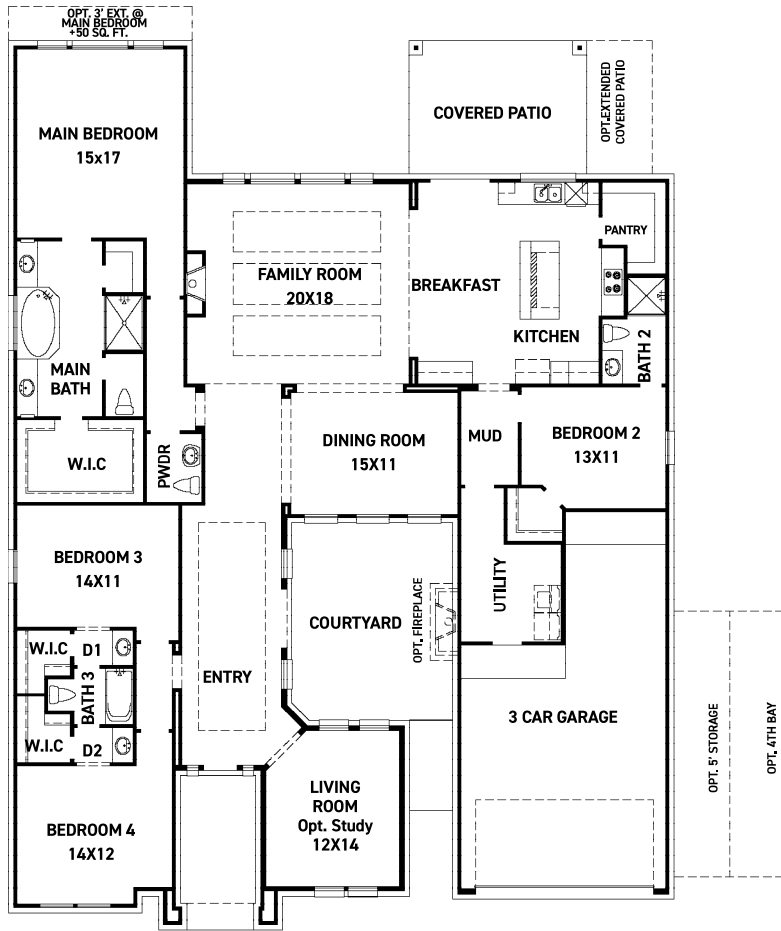


These drawings are conceptual only and are for the convenience of reference. They should not be relied upon as representations, express or implied, of the final detail of the residences. The builder expressly reserves the right to make modifications, revisions, and changes it deems desirable in its sole and absolute discretion. Dimensions and square footages are approximate and may vary with actual construction. Due to design and footage requirements not all options/elevations are available in all locations.



newmarkhomes.com

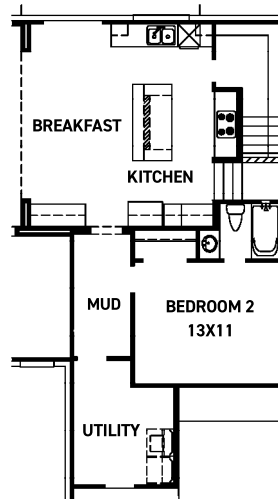
July 27, 2024



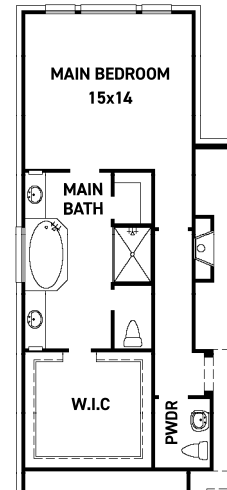
FIRST FLOOR PLAN

FEATURES:

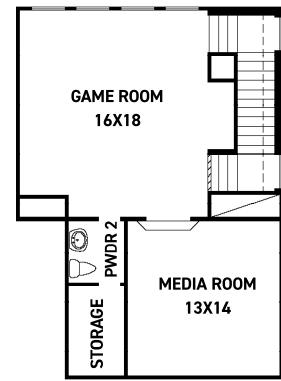
- 3160 SQUARE FT.
- 4 BEDROOM
- 3 1/2 BATHROOM
- 3 CAR GARAGE



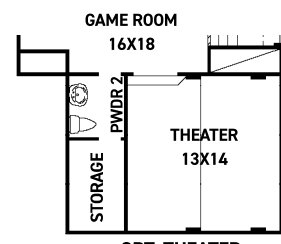
FIRST FLOOR W/ SECOND FLOOR
+29 SQ. FT.



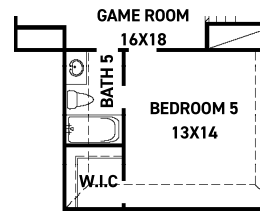
OPT. 3' EXTENDED MAIN CLOSET



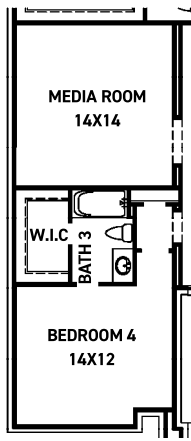
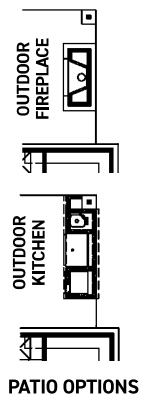
OPT. SECOND FLOOR PLAN
+624 SQ. FT.



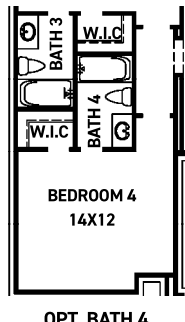
OPT. THEATER



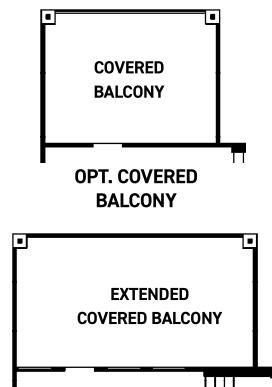
OPT. BEDROOM 5/BATH



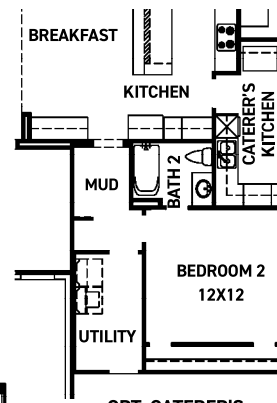
OPT. MEDIA ROOM



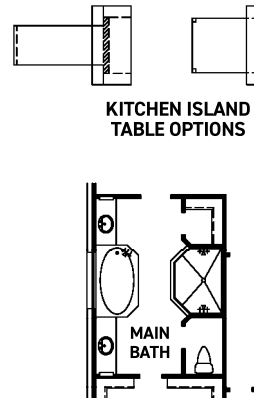
OPT. BATH 4



REQUIRES EXT. COVERED PATIO OPT.



NOT AVAILABLE W/ TWO-STORY OPTION



REV 01/24(7030)



These drawings are conceptual only and are for the convenience of reference. They should not be relied upon as representations, express or implied, of the final detail of the residences. The builder expressly reserves the right to make modifications, revisions, and changes it deems desirable in its sole and absolute discretion. Dimensions and square footages are approximate and may vary with actual construction. Due to design and footage requirements not all options/elevations are available in all locations.



newmarkhomes.com