

Just Reduced



## Plan Your Visit

# 18426 Lilac Woods Trail

Cypress, TX 77433 | MLS #17405694  
\$530,449

Sq Ft	Beds	Baths	Stories	Garage
<b>2,650</b>	<b>5</b>	<b>4</b>	<b>2</b>	<b>2</b>

The Donley by Newmark Homes, an exquisite blend of spaciousness and elegant design. Boasting 5 bedrooms and 4 bathrooms spread across 2,650 square feet, this home is a sanctuary of comfort and style. Step inside to discover delightful ... [READ MORE »](#)



**ELEVATION A**



**ELEVATION B**



**ELEVATION C**



**ELEVATION D**



**ELEVATION E**

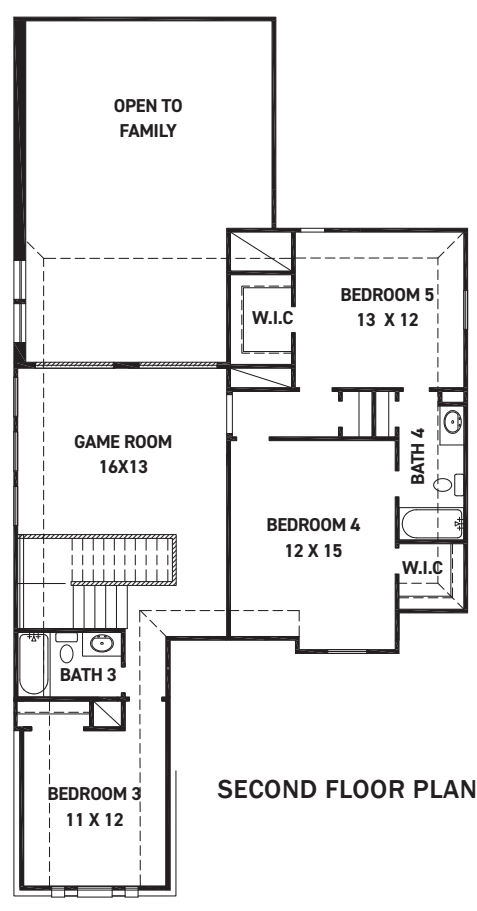
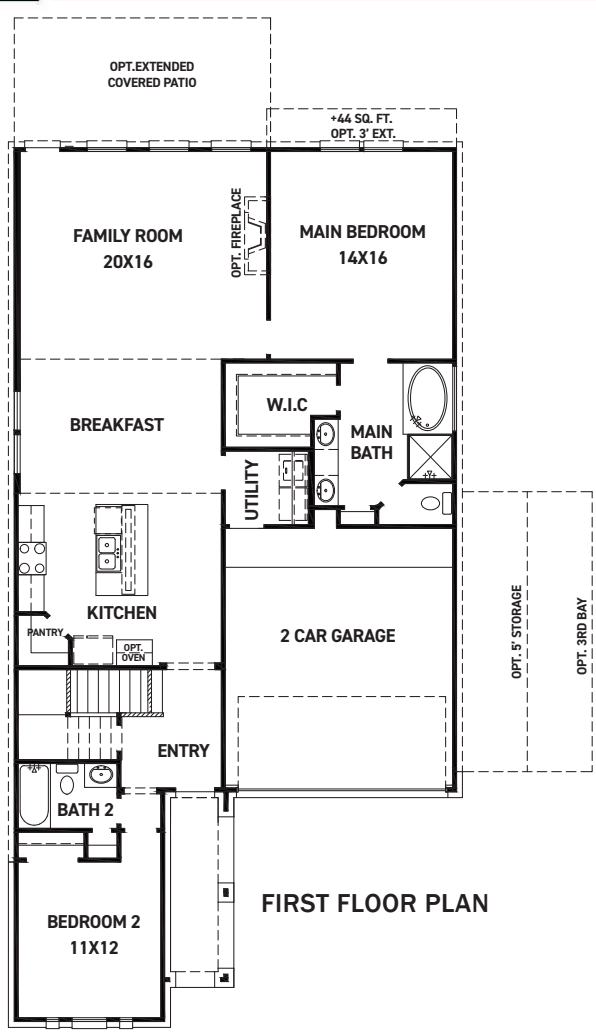
REV 04/24 (453D)



These drawings are conceptual only and are for the convenience of reference. They should not be relied upon as representations, express or implied, of the final detail of the residences. The builder expressly reserves the right to make modifications, revisions, and changes it deems desirable in its sole and absolute discretion. Dimensions and square footages are approximate and may vary with actual construction. Due to design and footage requirements not all options/elevations are available in all locations.

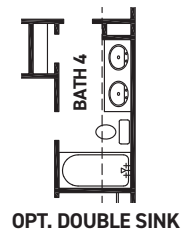
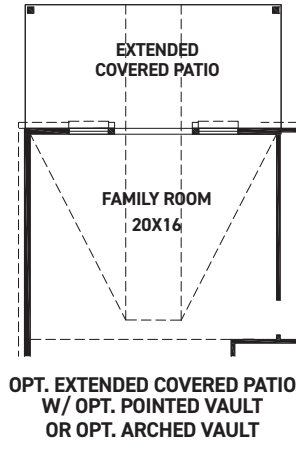
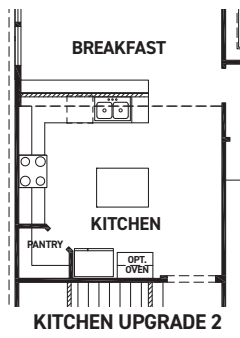
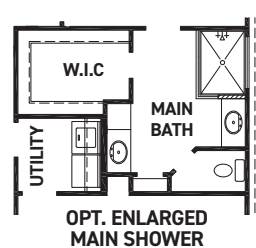


[newmarkhomes.com](http://newmarkhomes.com)



**FEATURES:**

- 2,650 SQUARE FT.
- 5 BEDROOM
- 4 BATHROOM
- 2 CAR GARAGE



REV 04/24 (453D)



These drawings are conceptual only and are for the convenience of reference. They should not be relied upon as representations, express or implied, of the final detail of the residences. The builder expressly reserves the right to make modifications, revisions, and changes it deems desirable in its sole and absolute discretion. Dimensions and square footages are approximate and may vary with actual construction. Due to design and footage requirements not all options/elevations are available in all locations.



[newmarkhomes.com](http://newmarkhomes.com)