

Just Reduced



30030 Gold Finch Place

Fulshear, TX 77441 | MLS #85256293
\$445,800

Sq Ft	Beds	Baths	Stories	Garage
2,185	3	2.5	1	2

Fabulous 1-story plan by Newmark, the Lisbon features 3 bedrooms, 2.5 baths and a 2 car garage. Beautiful 10 ft ceilings in the common areas add to the attractive and beautiful large windows in the family room. Stunning 8 ft door as yo... [READ MORE »](#)

Plan Your Visit



ELEVATION 1



ELEVATION 2



ELEVATION 3



ELEVATION 4



ELEVATION 5



ELEVATION 6



ELEVATION 7

REV 06/24/50

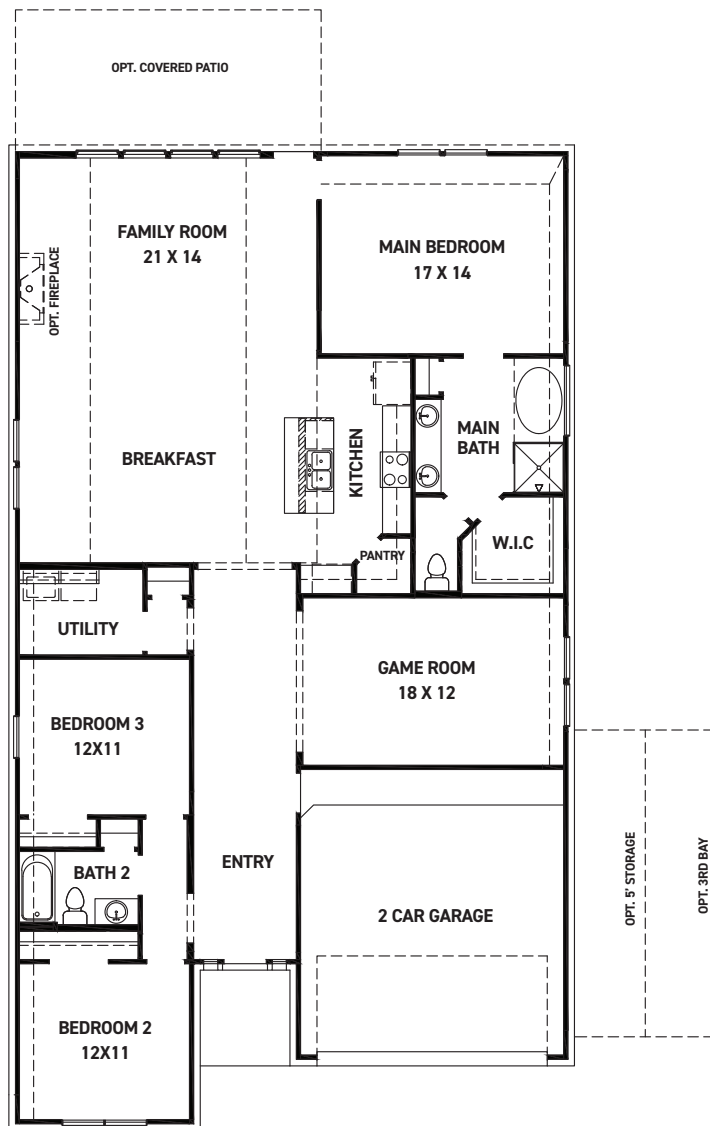


These drawings are conceptual only and are for the convenience of reference. They should not be relied upon as representations, express or implied, of the final detail of the residences. The builder expressly reserves the right to make modifications, revisions, and changes it deems desirable in its sole and absolute discretion. Dimensions and square footages are approximate and may vary with actual construction. Due to design and footage requirements not all options/elevations are available in all locations.



newmarkhomes.com

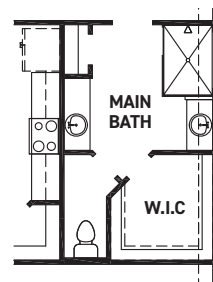
July 27, 2024



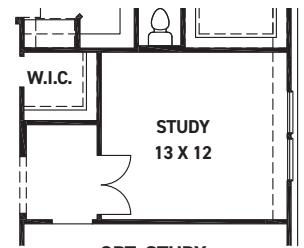
FIRST FLOOR PLAN

FEATURES:

- 2185 SQUARE FT.
- 3 BEDROOM
- 2 BATHROOM
- 2 CAR GARAGE



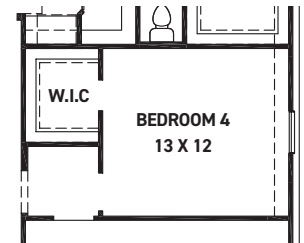
OPT. ENLARGED
MAIN SHOWER



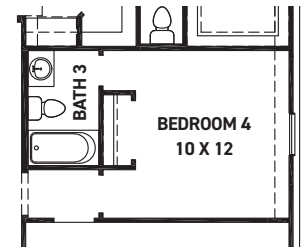
OPT. STUDY



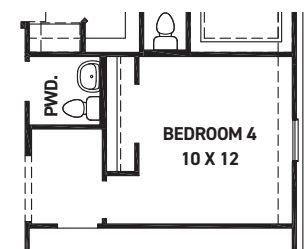
OPT. STUDY
W/POWDER ROOM



OPT. BEDROOM 4



OPT. BEDROOM 4
W/BATH 3



OPT. BEDROOM 4
W/POWDER ROOM

REV 06/24(50



These drawings are conceptual only and are for the convenience of reference. They should not be relied upon as representations, express or implied, of the final detail of the residences. The builder expressly reserves the right to make modifications, revisions, and changes it deems desirable in its sole and absolute discretion. Dimensions and square footages are approximate and may vary with actual construction. Due to design and footage requirements not all options/elevations are available in all locations.



newmarkhomes.com

July 27, 2024