

Just Reduced



18410 Moonlit Arbor Trail

Cypress, TX 77433 | MLS #19187443
\$534,917

Sq Ft	Beds	Baths	Stories	Garage
2,972	4	3.5	2	2

The Verona plan by Newmark Homes boasts a striking modern facade. Upon entry, a spacious study welcomes you. The 4-bedroom, 3.5 bath layout unfolds with expansive two-story windows in the family room, filling the space with light. The ... [READ MORE »](#)

Plan Your Visit

Towne Lake 50' Model
Heidelberg Plan
MODEL NOW OPEN
18211 Moonlit Arbor Trail
Cypress, TX 77433

MODEL HOME HOURS
Monday to Saturday: 10 a.m. - 6 p.m.
Sunday: 12 p.m. - 6 p.m.

Community Sales Manager
Susan Cardenas
(281) 520-9235
scardenas@newmarkhomes.com



Verona



ELEVATION 1



ELEVATION 2



ELEVATION 4



ELEVATION 5

REV 07/23 (5)

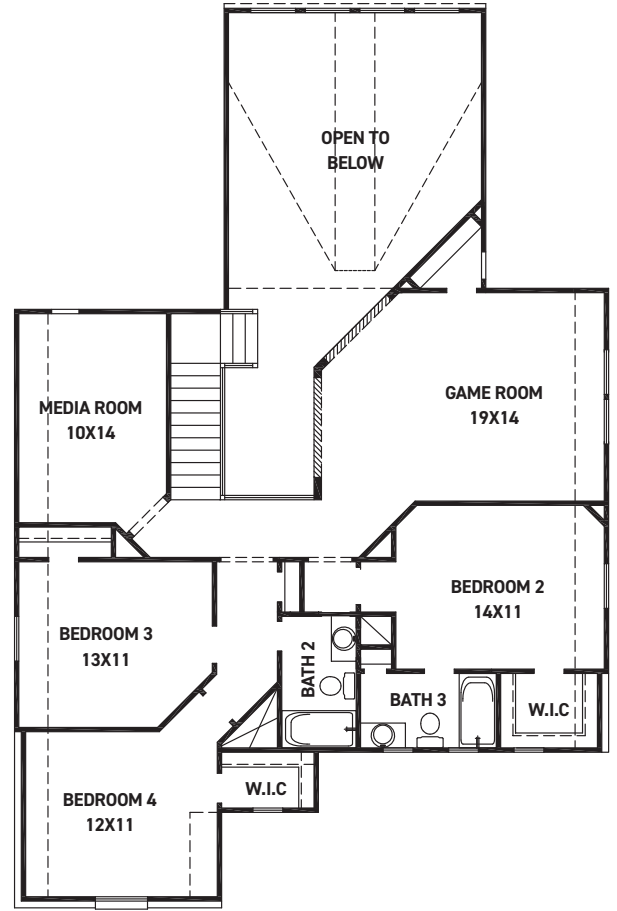
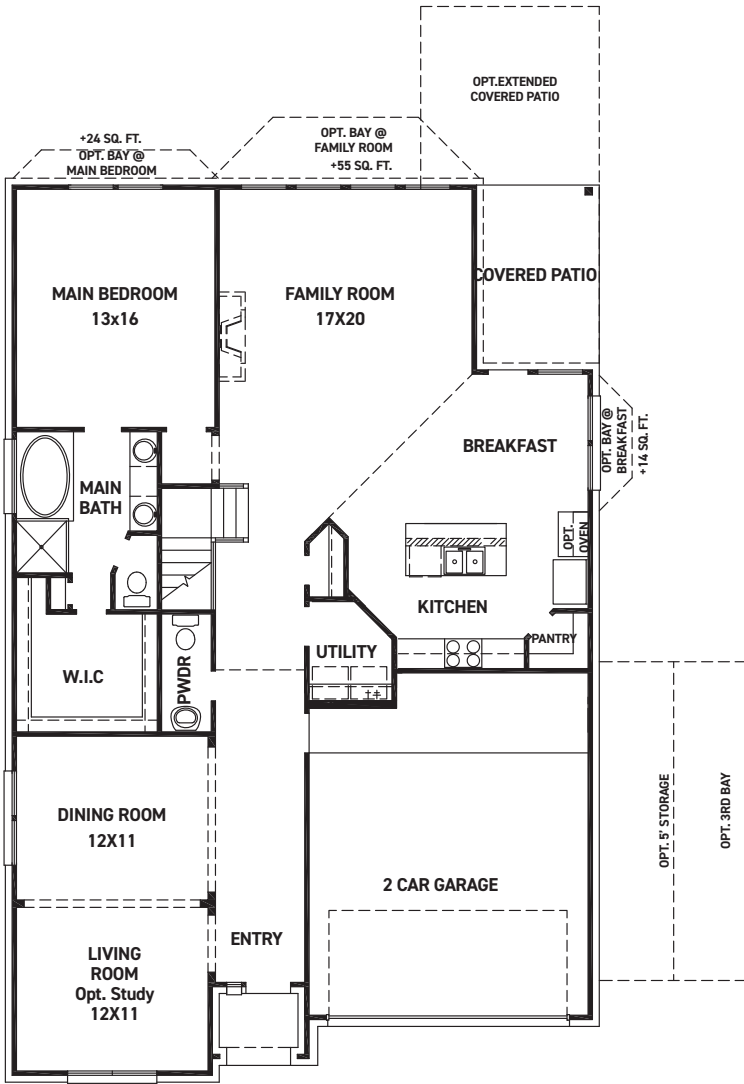


These drawings are conceptual only and are for the convenience of reference. They should not be relied upon as representations, express or implied, of the final detail of the residences. The builder expressly reserves the right to make modifications, revisions, and changes it deems desirable in its sole and absolute discretion. Dimensions and square footages are approximate and may vary with actual construction. Due to design and footage requirements not all options/elevations are available in all locations.



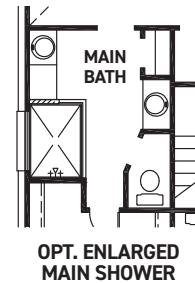
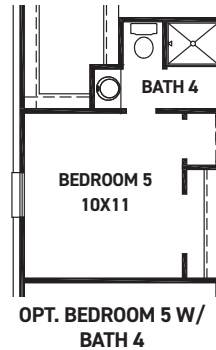
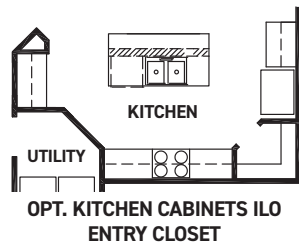
newmarkhomes.com

July 15, 2024



FEATURES:

- 2,989 SQUARE FT.
- 4 BEDROOM
- 3 1/2 BATHROOM
- 2 CAR GARAGE



REV 07/23(50)



These drawings are conceptual only and are for the convenience of reference. They should not be relied upon as representations, express or implied, of the final detail of the residences. The builder expressly reserves the right to make modifications, revisions, and changes it deems desirable in its sole and absolute discretion. Dimensions and square footages are approximate and may vary with actual construction. Due to design and footage requirements not all options/elevations are available in all locations.



newmarkhomes.com