



21526 Sand Fringepod Way

Cypress, TX 77433 | MLS #79434456
\$544,990

Sq Ft	Beds	Baths	Stories	Garage
2,650	5	4	2	2

The Donley plan by Newmark Homes features soaring high ceilings in the family room meet point-vaulted windows that overlook the spacious covered patio, and no back neighbor. Nice Transitional Elevation with 5 beds (2 down), 4 baths, Ro... [READ MORE »](#)

Plan Your Visit

Bridgeland 45' Model
Maverick Plan
21202 Flower Nectar Court
Cypress, TX 77433

MODEL HOME HOURS
Monday to Saturday: 10 a.m. - 6 p.m.
Sunday: 12 p.m. - 6 p.m.

Community Sales Manager
Kayla Smith
(713) 557-6860
ksmith@newmarkhomes.com



ELEVATION A



ELEVATION B



ELEVATION C



ELEVATION D



ELEVATION E

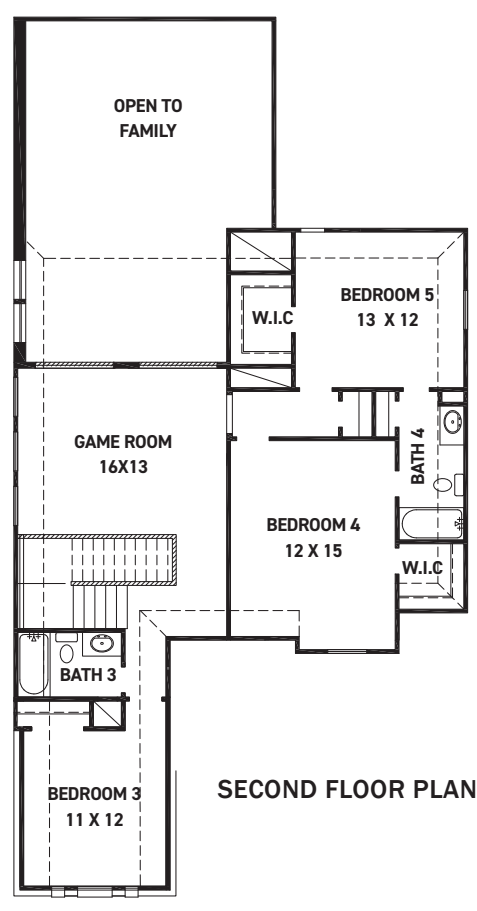
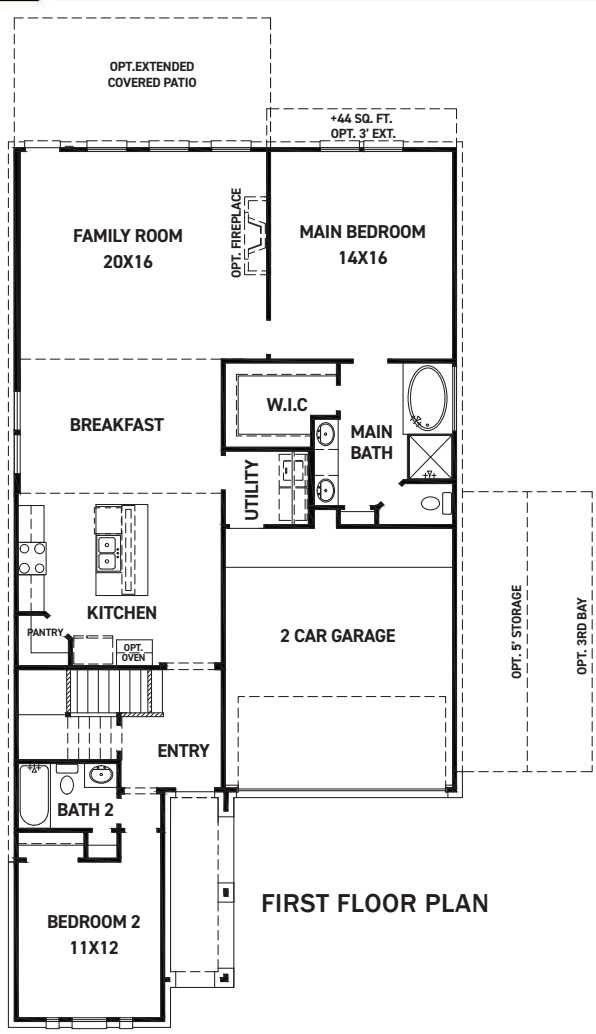
REV 04/24 (453D)



These drawings are conceptual only and are for the convenience of reference. They should not be relied upon as representations, express or implied, of the final detail of the residences. The builder expressly reserves the right to make modifications, revisions, and changes it deems desirable in its sole and absolute discretion. Dimensions and square footages are approximate and may vary with actual construction. Due to design and footage requirements not all options/elevations are available in all locations.

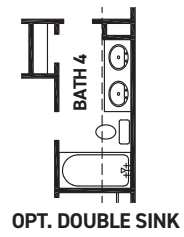
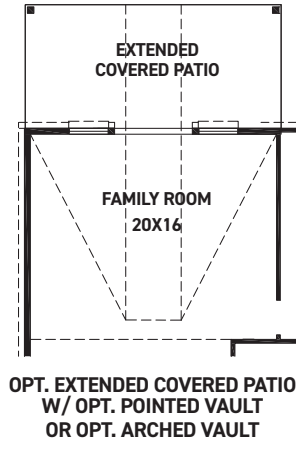
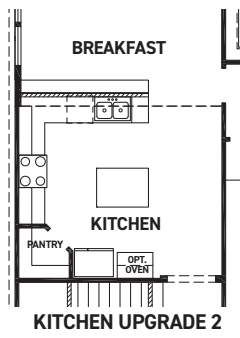
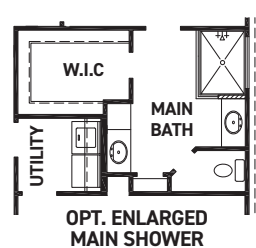


newmarkhomes.com



FEATURES:

- 2,650 SQUARE FT.
- 5 BEDROOM
- 4 BATHROOM
- 2 CAR GARAGE



REV 04/24 (453D)



These drawings are conceptual only and are for the convenience of reference. They should not be relied upon as representations, express or implied, of the final detail of the residences. The builder expressly reserves the right to make modifications, revisions, and changes it deems desirable in its sole and absolute discretion. Dimensions and square footages are approximate and may vary with actual construction. Due to design and footage requirements not all options/elevations are available in all locations.



newmarkhomes.com