



17015 Luminous Lane

Hockley, TX 77447 | MLS #5953738
\$454,000

Sq Ft	Beds	Baths	Stories	Garage
2,228	4	3	2	2

The KENDALL by NEWMARK HOMES, a blend of functionality and modern design. Boasting 4 bedrooms, 3 bathrooms, a game room and media room spread across 2,228 square feet, this home is a sanctuary of comfort and style. Step inside to disco... [READ MORE »](#)

Plan Your Visit

Jubilee 45' Model
Presidio Plan
Model NOW Open!
26206 Happy Home Street
Hockley, TX 77447

MODEL HOME HOURS
Monday to Saturday: 10 a.m. - 6 p.m.
Sunday: 12 p.m. - 6 p.m.

Community Sales Manager
Martha Nguyen
[832-253-8931](tel:832-253-8931)
mnguyen@newmarkhomes.com



ELEVATION A



ELEVATION B



ELEVATION C



ELEVATION D



ELEVATION E

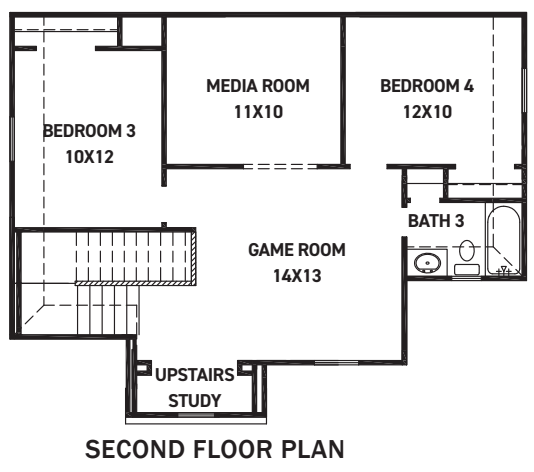
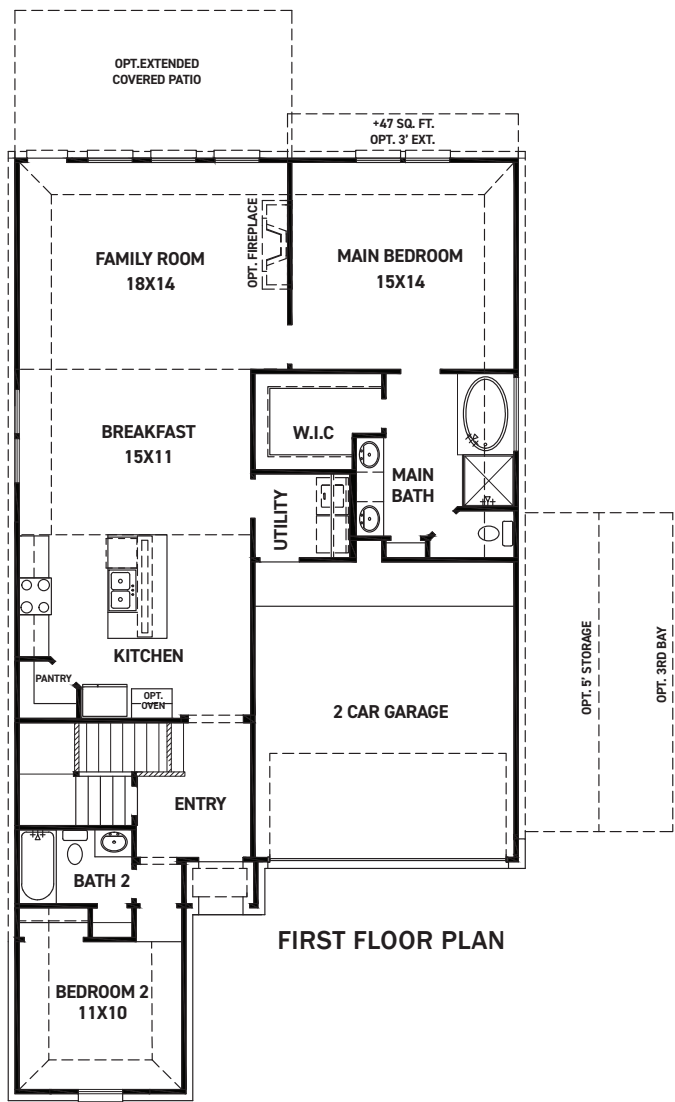
REV 04/24 (453K)



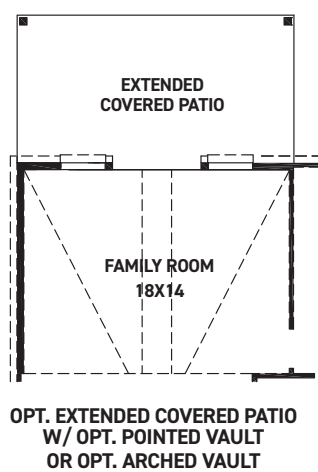
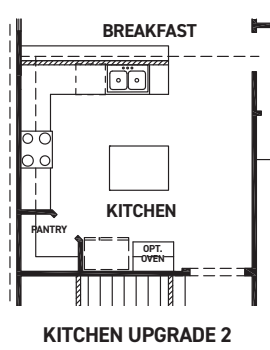
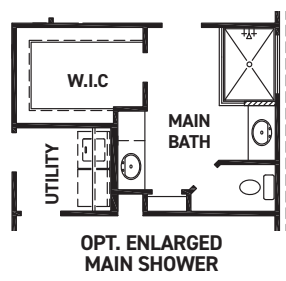
These drawings are conceptual only and are for the convenience of reference. They should not be relied upon as representations, express or implied, of the final detail of the residences. The builder expressly reserves the right to make modifications, revisions, and changes it deems desirable in its sole and absolute discretion. Dimensions and square footages are approximate and may vary with actual construction. Due to design and footage requirements not all options/elevations are available in all locations.



newmarkhomes.com



- FEATURES:**
- 2,228 SQUARE FT.
 - 4 BEDROOM
 - 3 BATHROOM
 - 2 CAR GARAGE



REV 04/24 (453K)



These drawings are conceptual only and are for the convenience of reference. They should not be relied upon as representations, express or implied, of the final detail of the residences. The builder expressly reserves the right to make modifications, revisions, and changes it deems desirable in its sole and absolute discretion. Dimensions and square footages are approximate and may vary with actual construction. Due to design and footage requirements not all options/elevations are available in all locations.



newmarkhomes.com