



5114 Sistine Drive

Iowa Colony, TX 77583 | MLS #64081556
\$424,000

Sq Ft	Beds	Baths	Stories	Garage
2,223	4	3	2	2

Welcome to Newmark Homes in Meridiana! This is our Bluebell plan elevation 3 with white and grey exterior. Enjoy the together time in the family room, breakfast and kitchen area with this open floor plan. The study is located away from...
[READ MORE »](#)

Plan Your Visit

Meridiana 40' Model
Bluebell Plan
Model Now Open!
5311 Majestic Court
Manvel, TX 77578

MODEL HOME HOURS
Monday to Saturday: 10 a.m. - 6 p.m.
Sunday: 12 p.m. - 6 p.m.

Community Sales Manager
Rene Bingle
[512-903-2681](tel:512-903-2681)
rbingle@newmarkhomes.com



ELEVATION 1



ELEVATION 2



ELEVATION 3

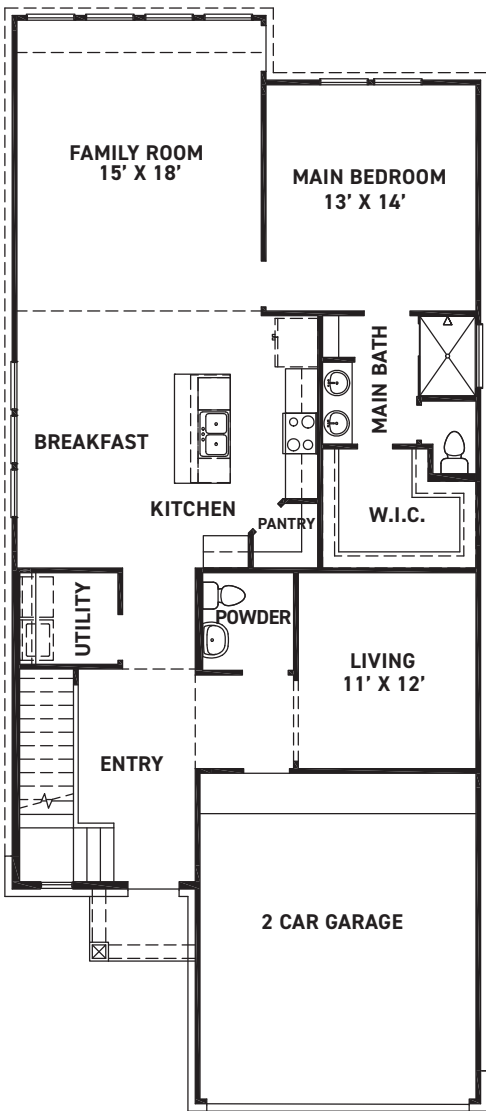
REV 1/22 (401J)



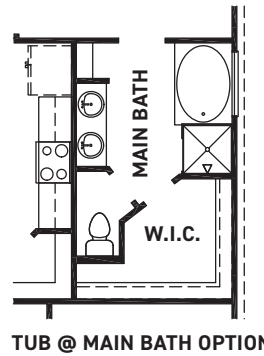
These drawings are conceptual only and are for the convenience of reference. They should not be relied upon as representations, express or implied, of the final detail of the residences. The builder expressly reserves the right to make modifications, revisions, and changes it deems desirable in its sole and absolute discretion. Dimensions and square footages are approximate and may vary with actual construction.



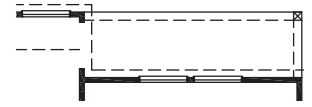
newmarkhomes.com



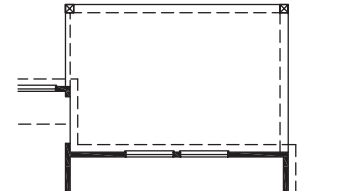
FIRST FLOOR PLAN



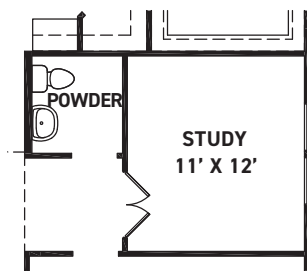
TUB @ MAIN BATH OPTION



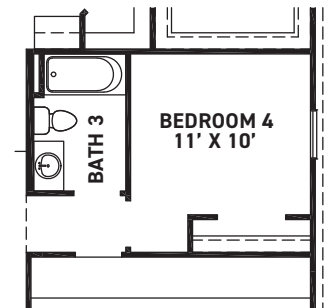
COVERED PATIO OPTION



EXTENDED COVERED PATIO OPTION



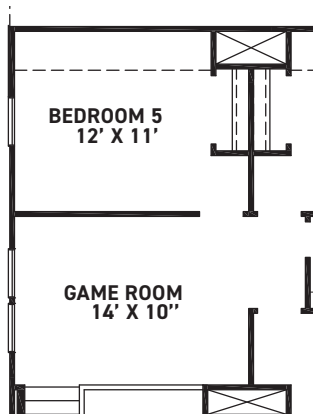
STUDY OPTION



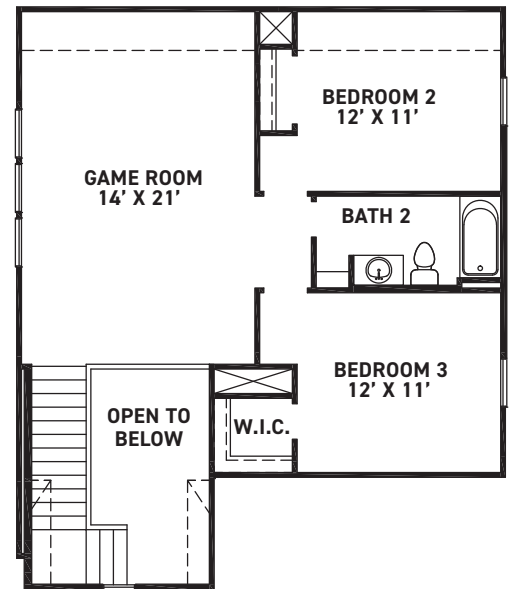
BEDROOM 4 BATH 3 ILO LIVING

FEATURES:

- 2223 SQUARE FT.
- 3 BEDROOM
- 2-1/2 BATHROOM
- 2 CAR GARAGE



BEDROOM 5 OPTION



SECOND FLOOR PLAN

REV 1/22(401J)



These drawings are conceptual only and are for the convenience of reference. They should not be relied upon as representations, express or implied, of the final detail of the residences. The builder expressly reserves the right to make modifications, revisions, and changes it deems desirable in its sole and absolute discretion. Dimensions and square footages are approximate and may vary with actual construction.



newmarkhomes.com