



5135 Murillo Drive

Iowa Colony, TX 77583 | MLS #70132164
\$374,000

Sq Ft	Beds	Baths	Stories	Garage
1,753	3	2	1	2

Welcome to Newmark Homes in Meridiana! This is our gorgeous Foxglove Plan elevation 2. Clean modern stucco and brick with greys and whites. This home has tons of space for entertainment with a huge family room large enough for the enti... [READ MORE »](#)

Plan Your Visit

Meridiana 40' Model
Bluebell Plan
Model Now Open!
5311 Majestic Court
Manvel, TX 77578

MODEL HOME HOURS
Monday to Saturday: 10 a.m. - 6 p.m.
Sunday: 12 p.m. - 6 p.m.

Community Sales Manager
Rene Bingle
[512-903-2681](tel:512-903-2681)
rbingle@newmarkhomes.com



Foxglove



ELEVATION 1



ELEVATION 2



ELEVATION 3

REV 1/22 (401D)

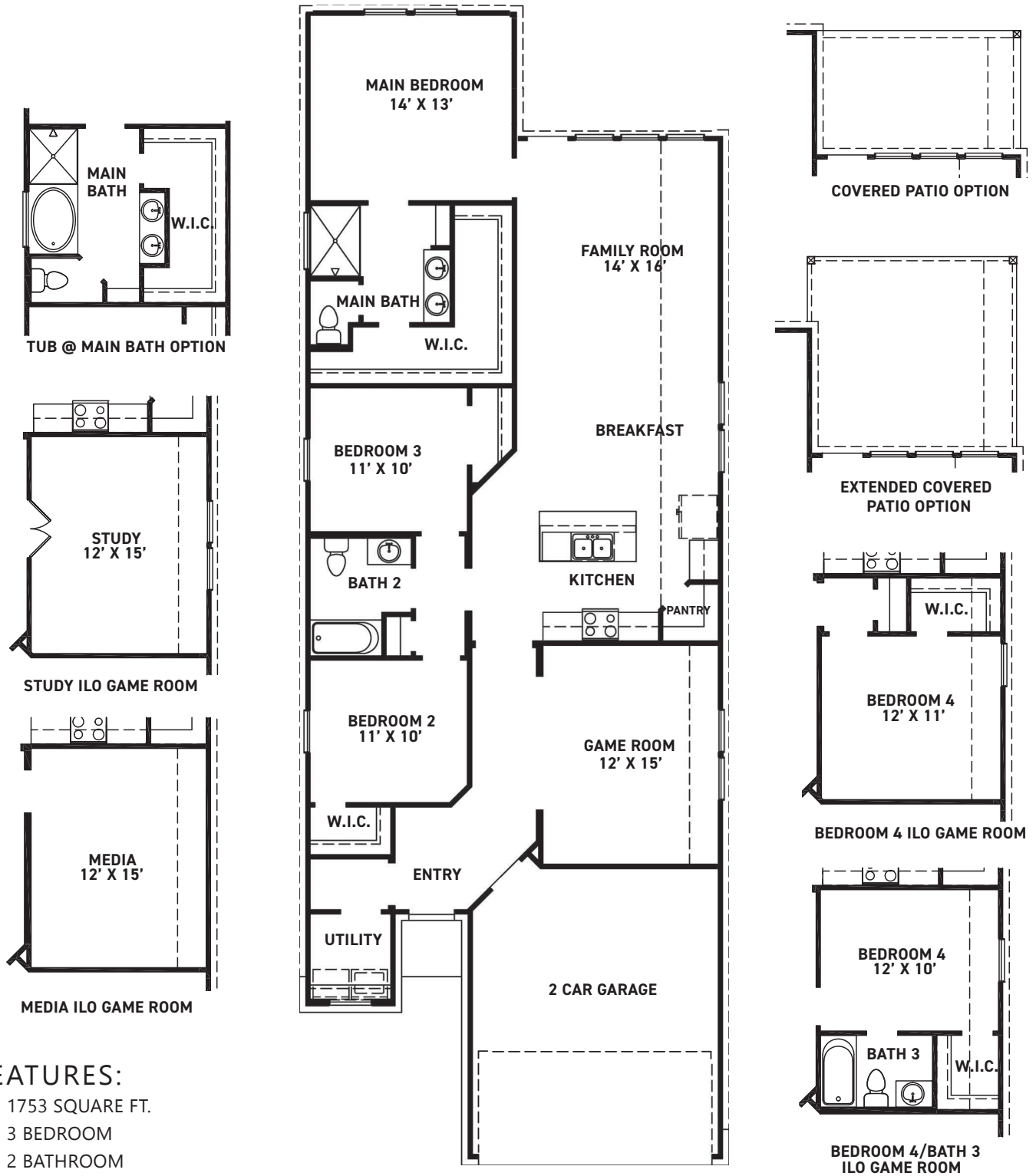


These drawings are conceptual only and are for the convenience of reference. They should not be relied upon as representations, express or implied, of the final detail of the residences. The builder expressly reserves the right to make modifications, revisions, and changes it deems desirable in its sole and absolute discretion. Dimensions and square footages are approximate and may vary with actual construction.



newmarkhomes.com

July 15, 2024



FIRST FLOOR PLAN

REV 1/22 (401D)

FEATURES:

- 1753 SQUARE FT.
- 3 BEDROOM
- 2 BATHROOM
- 2 CAR GARAGE



These drawings are conceptual only and are for the convenience of reference. They should not be relied upon as representations, express or implied, of the final detail of the residences. The builder expressly reserves the right to make modifications, revisions, and changes it deems desirable in its sole and absolute discretion. Dimensions and square footages are approximate and may vary with actual construction.



newmarkhomes.com