



## Lower Interest Rates Available!

Flex Allowance to use YOUR way on select Quick Delivery Homes

**Flex Allowance Available\***



# 1093 Sage Thrasher Circle

Dripping Springs, TX 78620 | MLS #7774945

**\$624,990**

	Beds	Baths	Stories	Garage
<b>2,496</b>	<b>4</b>	<b>3</b>	<b>2</b>	<b>2</b>

The Newton plan offers plenty of room for comfortable living, featuring four bedrooms, three bathrooms, a game room, media room and mud room. **Flex cash allowance, plus up to \$7,000 in closing cost contributions with our preferred lende... READ MORE »**

## Plan Your Visit

Headwaters Artisan Plan - 50'  
Newton Plan  
166 Hazy Hills Loop  
Dripping Springs, Texas 78620

### MODEL HOME HOURS

Monday to Saturday: 10 a.m. - 6 p.m.

Sunday: 12 p.m. - 6 p.m.

Community Sales Manager

Dori Conway

(612) 720-1090

[dconway@newmarkhomes.com](mailto:dconway@newmarkhomes.com)



**ELEVATION A**



**ELEVATION B**



**ELEVATION C**



**ELEVATION D**



**ELEVATION E**

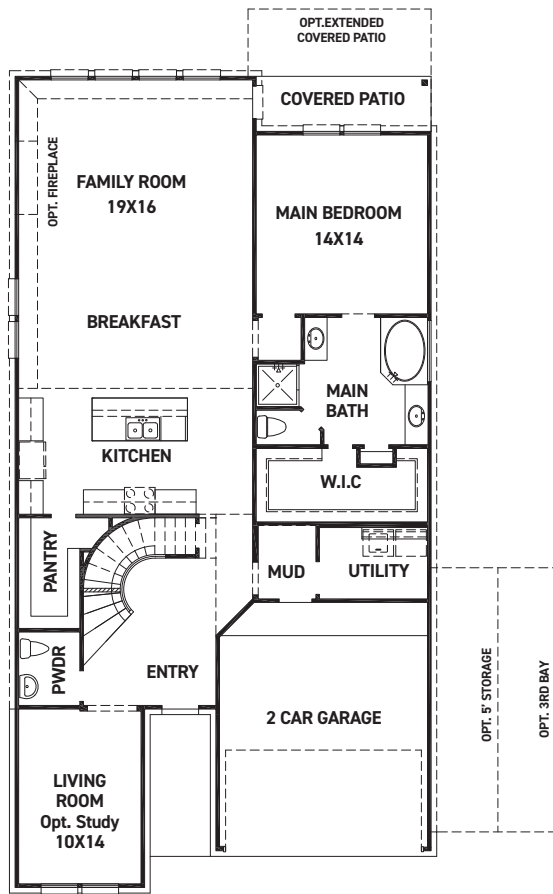
REV 03/23 (453N)



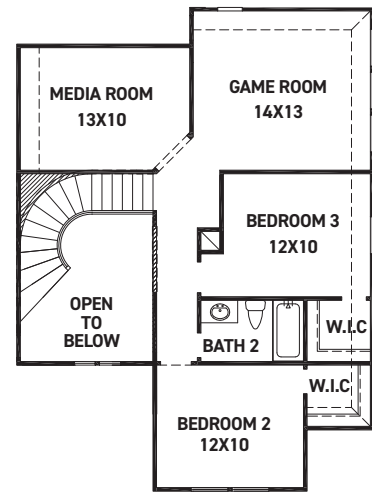
These drawings are conceptual only and are for the convenience of reference. They should not be relied upon as representations, express or implied, of the final detail of the residences. The builder expressly reserves the right to make modifications, revisions, and changes it deems desirable in its sole and absolute discretion. Dimensions and square footages are approximate and may vary with actual construction. Due to design and footage requirements not all options/elevations are available in all locations.



[newmarkhomes.com](http://newmarkhomes.com)



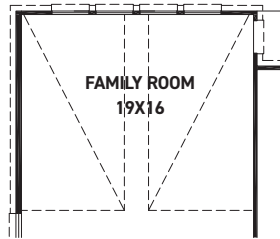
FIRST FLOOR PLAN



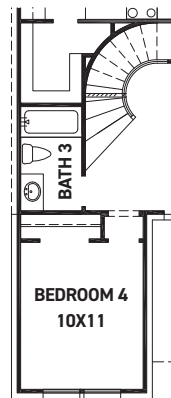
SECOND FLOOR PLAN

### FEATURES:

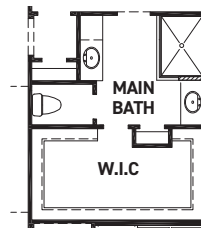
- 2,567 SQUARE FT.
- 3 BEDROOM
- 2 1/2 BATHROOM
- 2 CAR GARAGE



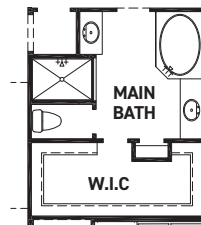
OPT. POINTED VAULT  
OPT. ARCHED VAULT



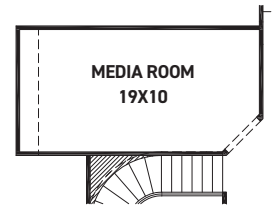
OPT. BEDROOM 4  
W/ BATH 3



OPT. MAIN BATH  
LAYOUT W/ ENLARGED  
SHOWER



OPT. ENLARGED MAIN  
SHOWER W/ TUB



OPT. EXTENDED  
MEDIA ROOM  
+66 SQ.



OPT. BEDROOM 5  
@ MEDIA ROOM  
+66 SQ.

REV 03/23 (453)



These drawings are conceptual only and are for the convenience of reference. They should not be relied upon as representations, express or implied, of the final detail of the residences. The builder expressly reserves the right to make modifications, revisions, and changes it deems desirable in its sole and absolute discretion. Dimensions and square footages are approximate and may vary with actual construction. Due to design and footage requirements not all options/elevations are available in all locations.



[newmarkhomes.com](http://newmarkhomes.com)