



31423 Warm Kindling Way

Fulshear, TX 77441 | MLS #3174600
\$541,635

| Sq Ft | Beds | Baths | Stories | Garage |
|--------------|----------|----------|----------|----------|
| 3,001 | 4 | 3 | 2 | 3 |

The top selling LINZ MODEL plan by NEWMARK HOMES in the must see CROSS CREEK WEST COMMUNITY checks all the boxes. This 4/3/3 2 story w/ 2 down has a bold show stopping brick & stucco front elevation with a high entry. The hand selected... [READ MORE »](#)

Plan Your Visit

Cross Creek West 50' Model
Linz Plan
Model Home NOW OPEN!
31518 Bramble Hollow Court
Fulshear, TX 77441

MODEL HOME HOURS
Monday to Saturday: 10 a.m. - 6 p.m.
Sunday: 12 p.m. - 6 p.m.

Community Sales Manager
Andrew Turco
[\(713\) 825-4914](tel:(713)825-4914)
aturco@newmarkhomes.com



ELEVATION 1



ELEVATION 2



ELEVATION 3



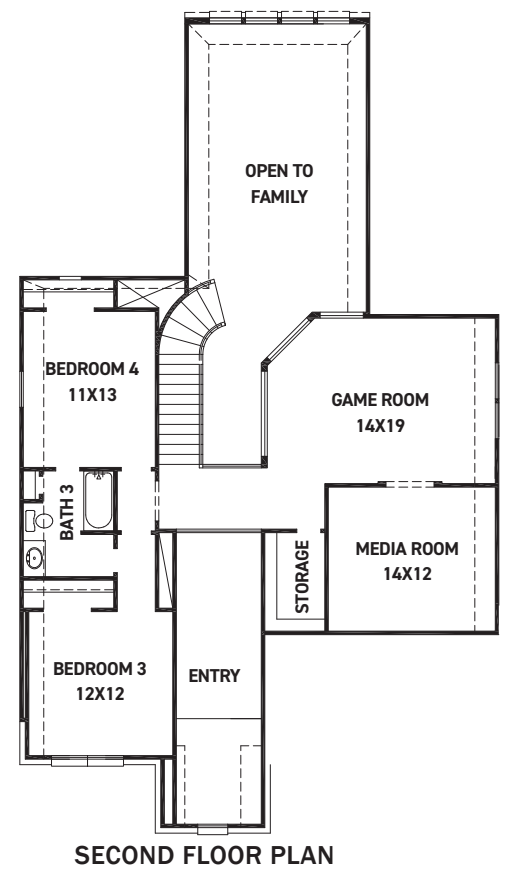
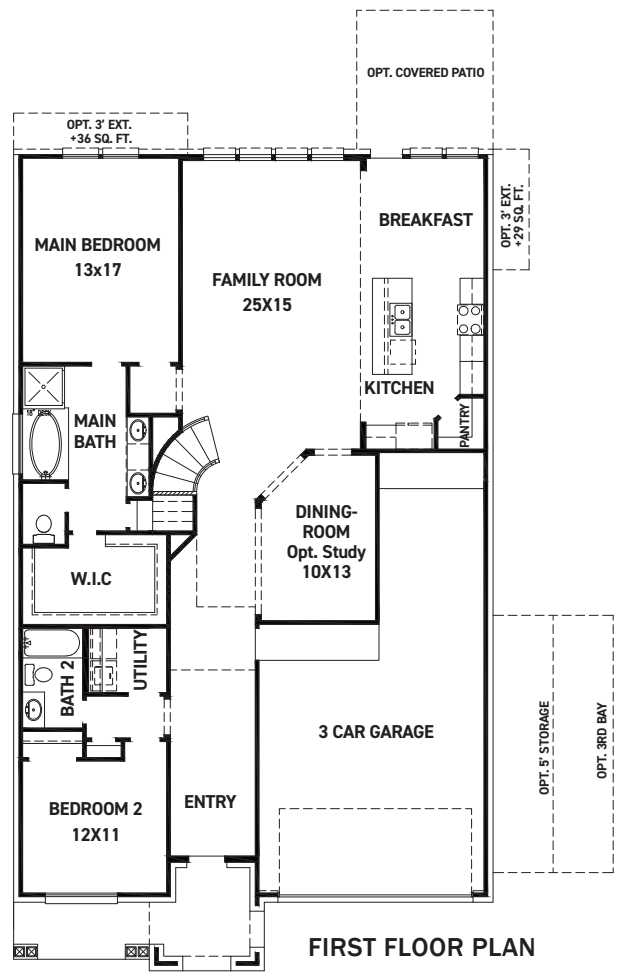
ELEVATION 4



These drawings are conceptual only and are for the convenience of reference. They should not be relied upon as representations, express or implied, of the final detail of the residences. The builder expressly reserves the right to make modifications, revisions, and changes it deems desirable in its sole and absolute discretion. Dimensions and square footages are approximate and may vary with actual construction. Due to design and footage requirements not all options/elevations are available in all locations.

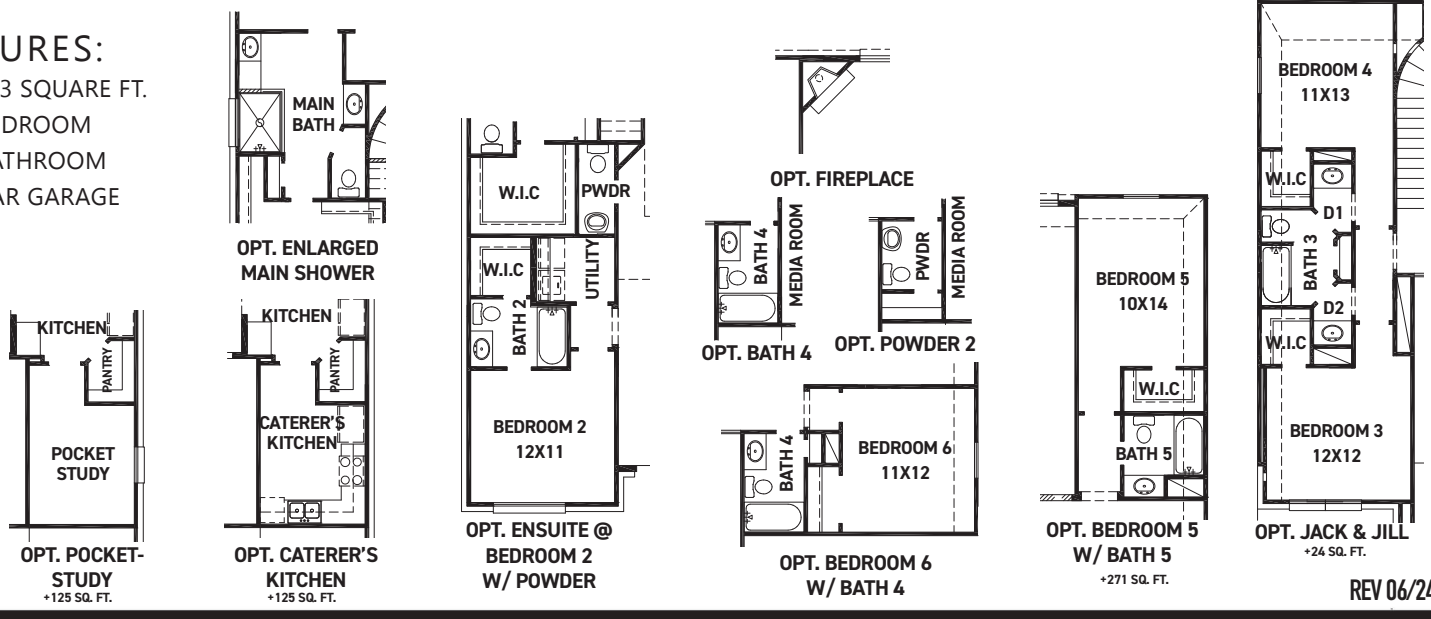


newmarkhomes.com



FEATURES:

- 2,953 SQUARE FT.
- 4 BEDROOM
- 3 BATHROOM
- 3 CAR GARAGE



REV 06/24 (5)



These drawings are conceptual only and are for the convenience of reference. They should not be relied upon as representations, express or implied, of the final detail of the residences. The builder expressly reserves the right to make modifications, revisions, and changes it deems desirable in its sole and absolute discretion. Dimensions and square footages are approximate and may vary with actual construction. Due to design and footage requirements not all options/elevations are available in all locations.



newmarkhomes.com