



8214 Boundary Waters Dr

Porter, TX 77365 | MLS #97454916
\$550,743

Sq Ft	Beds	Baths	Stories	Garage
2,799	5	4.5	2	2

NEWMARK HOMES NEW CONSTRUCTION - Heidelberg - Welcome home to 8214 Boundary Waters Dr. located in the master planned community of The Highlands and zoned to New Caney ISD. This gorgeous home will feature 5 bedrooms, 4 full baths and an... [READ MORE »](#)

Plan Your Visit

The Highlands 50' Model
Roosevelt Plan
MODEL NOW OPEN

21718 Grayson Highlands Way
Porter, Texas 77365

MODEL HOME HOURS
Monday to Saturday: 10 a.m. - 6 p.m.
Sunday: 12 p.m. - 6 p.m.

Community Sales Manager

Rick Cole

713-598-1000

rcole@newmarkhomes.com

Celeste Valdez

832-646-2527

cvaldez@newmarkhomes.com



ELEVATION 1



ELEVATION 2



ELEVATION 3



ELEVATION 4

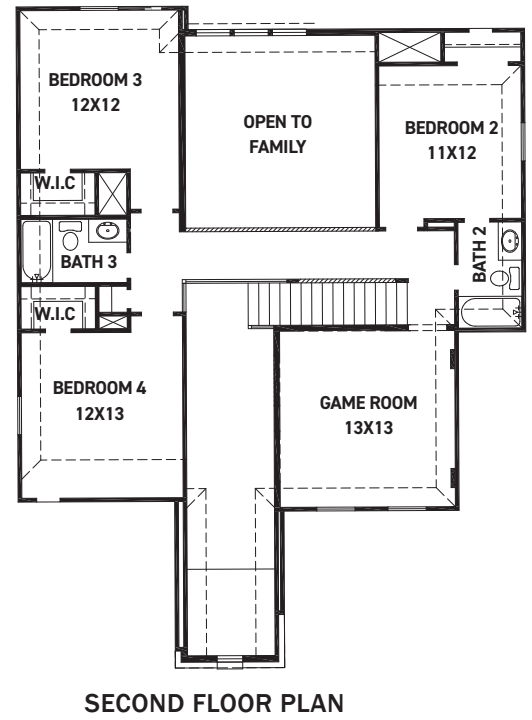
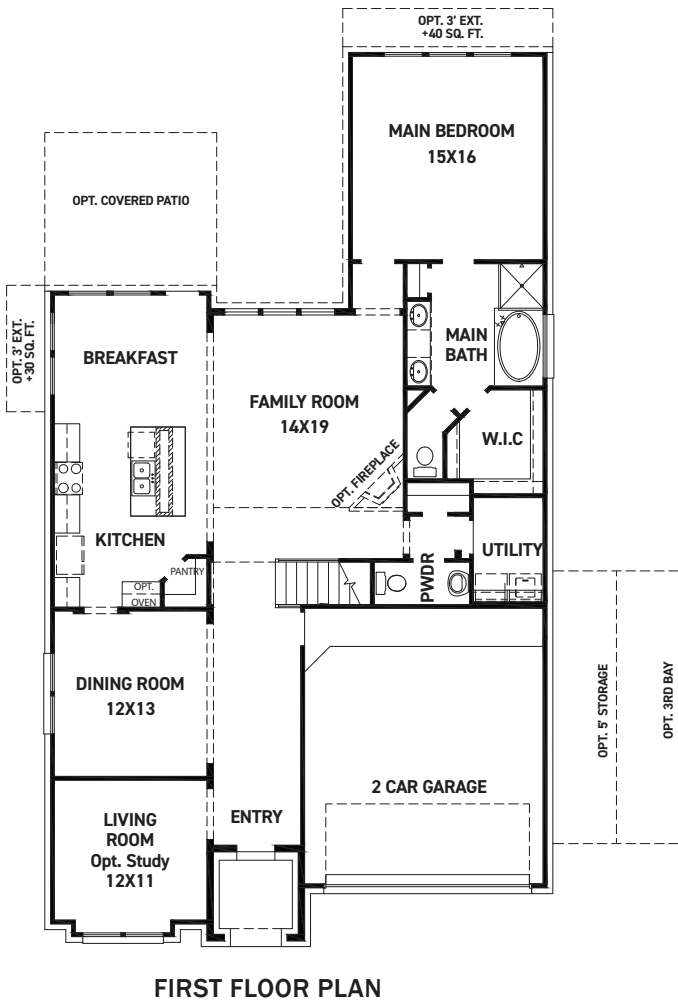
REV 06/24 (501



These drawings are conceptual only and are for the convenience of reference. They should not be relied upon as representations, express or implied, of the final detail of the residences. The builder expressly reserves the right to make modifications, revisions, and changes it deems desirable in its sole and absolute discretion. Dimensions and square footages are approximate and may vary with actual construction.

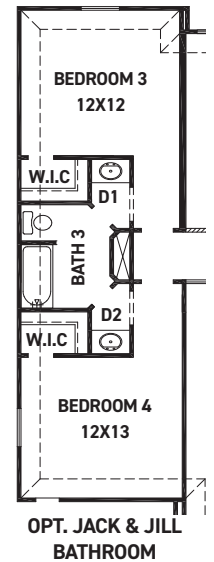
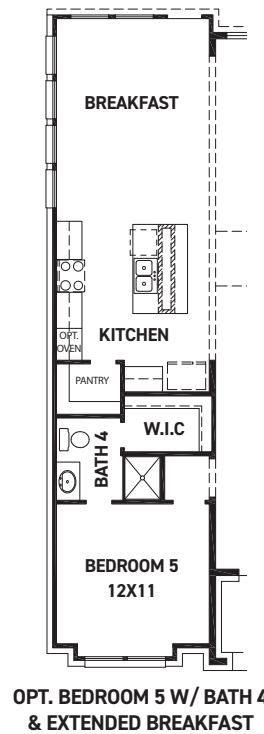
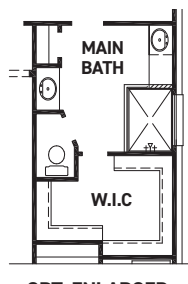
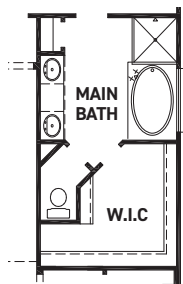


newmarkhomes.com



FEATURES:

- 2,799 SQUARE FT.
- 4 BEDROOM
- 3 1/2 BATHROOM
- 2 CAR GARAGE



REV 06/24 (50



These drawings are conceptual only and are for the convenience of reference. They should not be relied upon as representations, express or implied, of the final detail of the residences. The builder expressly reserves the right to make modifications, revisions, and changes it deems desirable in its sole and absolute discretion. Dimensions and square footages are approximate and may vary with actual construction.



newmarkhomes.com