



# 21711 Ellsworth Garden Ln

Porter, TX 77365 | MLS #42394717

\$489,446

Sq Ft	Beds	Baths	Stories	Garage
<b>2,185</b>	<b>4</b>	<b>2.5</b>	<b>1</b>	<b>2</b>

NEWMARK HOMES NEW CONSTRUCTION -  
Nice- Welcome home to 21711 Ellsworth Garden  
Lane located in the master planned community of  
The Highlands and zoned to New Caney ISD.  
This gorgeous home will feature 4bedrooms, 3  
baths, and attached 2 ... [READ MORE »](#)

## Plan Your Visit

The Highlands 50' Model

Roosevelt Plan

**MODEL NOW OPEN**

21718 Grayson Highlands Way  
Porter, Texas 77365

---

MODEL HOME HOURS

Monday to Saturday: 10 a.m. - 6 p.m.

Sunday: 12 p.m. - 6 p.m.

---

Community Sales Manager

Rick Cole

**713-598-1000**

[rcole@newmarkhomes.com](mailto:rcole@newmarkhomes.com)

Celeste Valdez

**832-646-2527**

[cvaldez@newmarkhomes.com](mailto:cvaldez@newmarkhomes.com)

---



**ELEVATION 1**



**ELEVATION 2**



**ELEVATION 3**



**ELEVATION 4**



**ELEVATION 5**



**ELEVATION 6**



**ELEVATION 7**

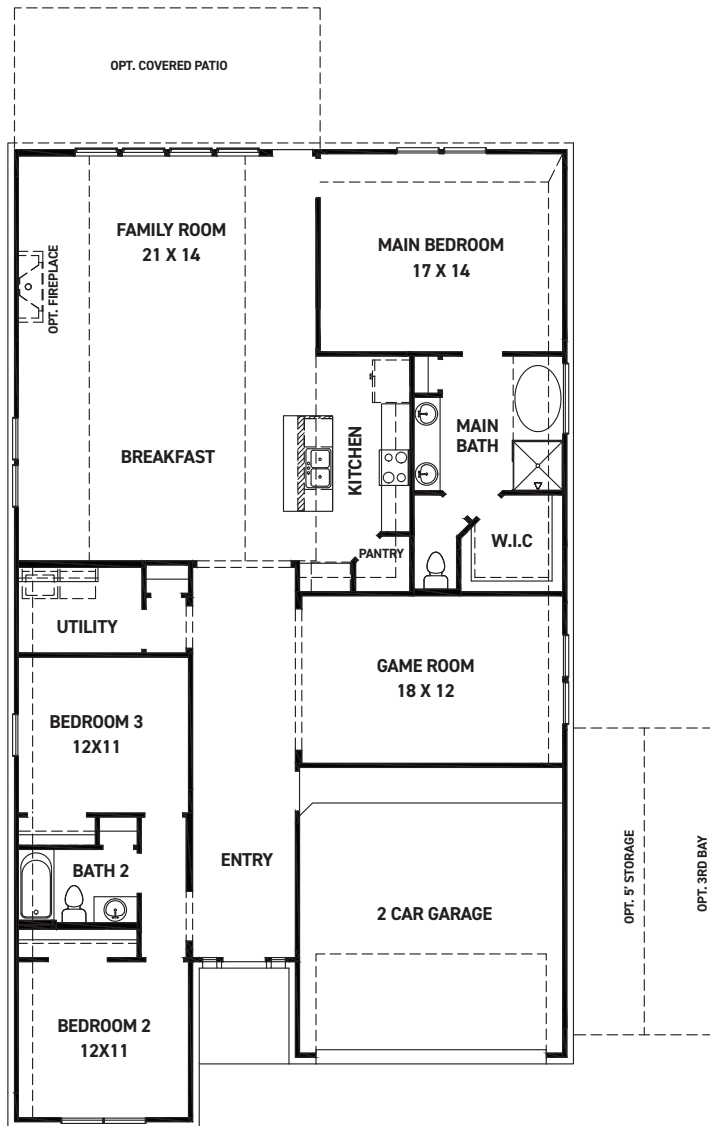
REV 06/24/50



These drawings are conceptual only and are for the convenience of reference. They should not be relied upon as representations, express or implied, of the final detail of the residences. The builder expressly reserves the right to make modifications, revisions, and changes it deems desirable in its sole and absolute discretion. Dimensions and square footages are approximate and may vary with actual construction. Due to design and footage requirements not all options/elevations are available in all locations.



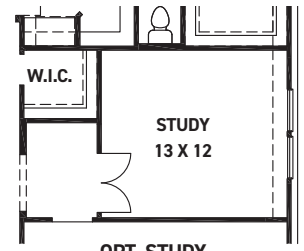
[newmarkhomes.com](http://newmarkhomes.com)



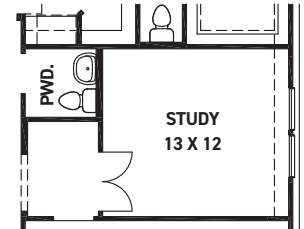
FIRST FLOOR PLAN

**FEATURES:**

- 2185 SQUARE FT.
- 3 BEDROOM
- 2 BATHROOM
- 2 CAR GARAGE



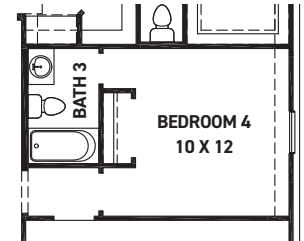
OPT. STUDY



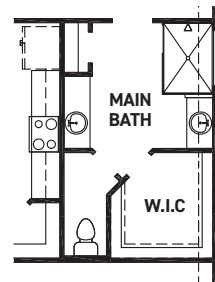
OPT. STUDY W/POWDER ROOM



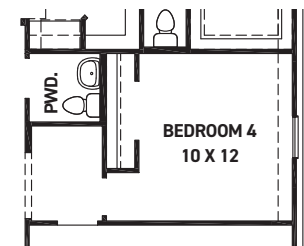
OPT. BEDROOM 4



OPT. BEDROOM 4 W/BATH 3



OPT. ENLARGED MAIN SHOWER



OPT. BEDROOM 4 W/POWDER ROOM

REV 06/24(50)



These drawings are conceptual only and are for the convenience of reference. They should not be relied upon as representations, express or implied, of the final detail of the residences. The builder expressly reserves the right to make modifications, revisions, and changes it deems desirable in its sole and absolute discretion. Dimensions and square footages are approximate and may vary with actual construction. Due to design and footage requirements not all options/elevations are available in all locations.



[newmarkhomes.com](http://newmarkhomes.com)