



10715 Verdant Hill

Missouri City, TX 77459 | MLS #91447017
\$580,000

Sq Ft	Beds	Baths	Stories	Garage
3,001	4	3.5	2	3

This Linz plan has a dramatic 2 story entry as well as soaring ceilings in the family room. 4 bedrooms, 3.5 baths, 3 car garage. Highly desirable 2 bedrooms on first floor. Open floor plan with a wall of windows in the family room, mak... [READ MORE »](#)

Plan Your Visit

Sienna 50' Model
Koblenz Plan
2006 Ironwood Pass Drive
Missouri City, TX 77459

MODEL HOME HOURS
Monday to Saturday: 10 a.m. - 6 p.m.
Sunday: 12 p.m. - 6 p.m.

Community Sales Manager

Dora Mar

[\(832\) 878-3672](tel:(832)878-3672)

dmar@newmarkhomes.com

Sharon Yu

[\(832\) 818-4663](tel:(832)818-4663)

syu@newmarkhomes.com



ELEVATION 1



ELEVATION 2



ELEVATION 3



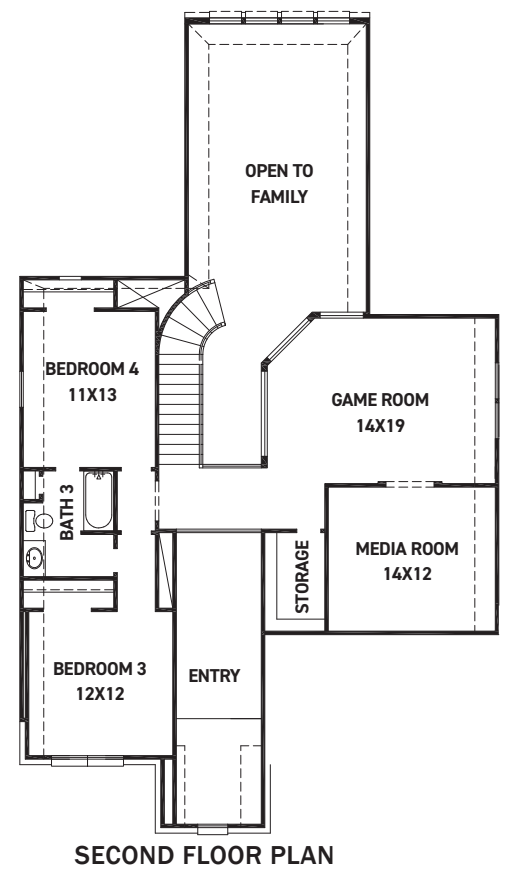
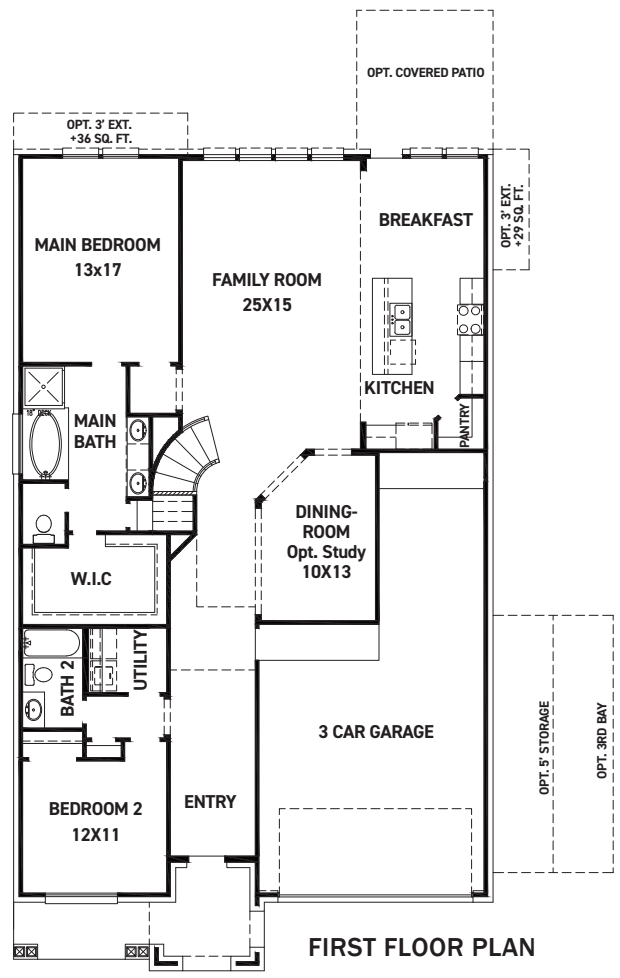
ELEVATION 4



These drawings are conceptual only and are for the convenience of reference. They should not be relied upon as representations, express or implied, of the final detail of the residences. The builder expressly reserves the right to make modifications, revisions, and changes it deems desirable in its sole and absolute discretion. Dimensions and square footages are approximate and may vary with actual construction. Due to design and footage requirements not all options/elevations are available in all locations.

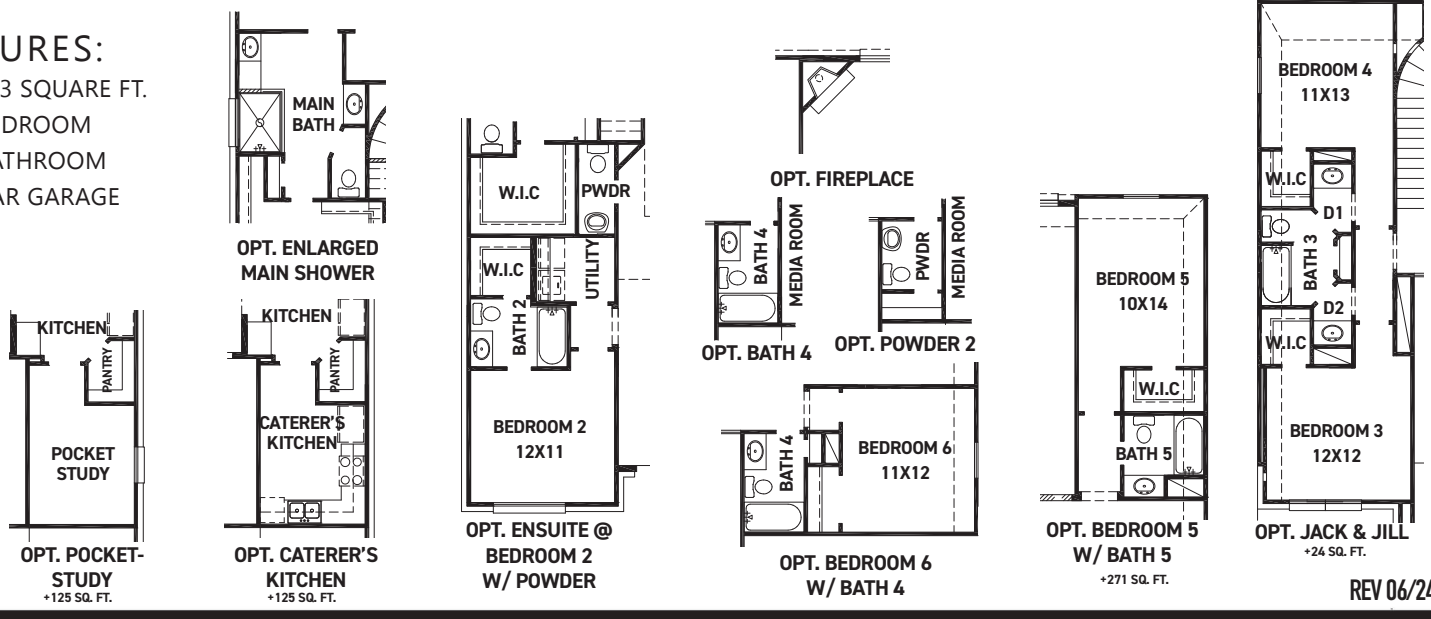


newmarkhomes.com



FEATURES:

- 2,953 SQUARE FT.
- 4 BEDROOM
- 3 BATHROOM
- 3 CAR GARAGE



REV 06/24 (5)



These drawings are conceptual only and are for the convenience of reference. They should not be relied upon as representations, express or implied, of the final detail of the residences. The builder expressly reserves the right to make modifications, revisions, and changes it deems desirable in its sole and absolute discretion. Dimensions and square footages are approximate and may vary with actual construction. Due to design and footage requirements not all options/elevations are available in all locations.



newmarkhomes.com