



# 10706 Verdant Hill

Missouri City, TX 77459 | MLS #5538685  
\$570,000

| Sq Ft        | Beds     | Baths      | Stories  | Garage   |
|--------------|----------|------------|----------|----------|
| <b>2,987</b> | <b>4</b> | <b>3.5</b> | <b>2</b> | <b>3</b> |

POPULAR - Newmark Homes - KOBLENZ is our model floor plan. Modern Elevation - 2 story home, 4 bed 3.5 baths. Main and secondary bedroom down with en-suite bath. Guest Powder room as well! 2 bedrooms up with jack and jill bath. High foy... [READ MORE »](#)

## Plan Your Visit

Sienna 50' Model  
Koblenz Plan  
2006 Ironwood Pass Drive  
Missouri City, TX 77459

---

MODEL HOME HOURS  
Monday to Saturday: 10 a.m. - 6 p.m.  
Sunday: 12 p.m. - 6 p.m.

---

Community Sales Manager

Sharon Yu

(832) 818-4663

[syu@newmarkhomes.com](mailto:syu@newmarkhomes.com)

Dora Mar

(832) 878-3672

[dmar@newmarkhomes.com](mailto:dmar@newmarkhomes.com)

---



**ELEVATION 1**



**ELEVATION 2**



**ELEVATION 3**



**ELEVATION 4**



**ELEVATION 12**



**ELEVATION 13**



**ELEVATION 14**



**ELEVATION 15**

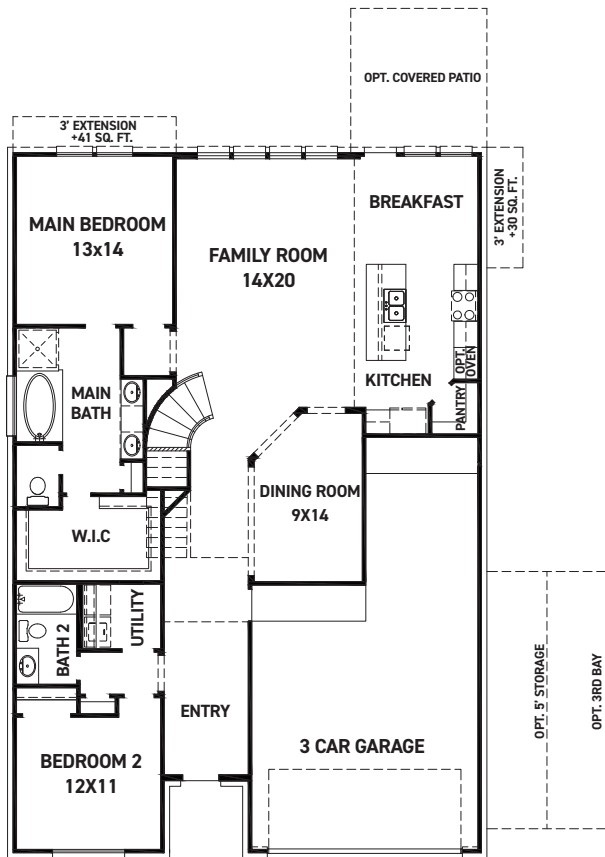
REV 06/24 (5)



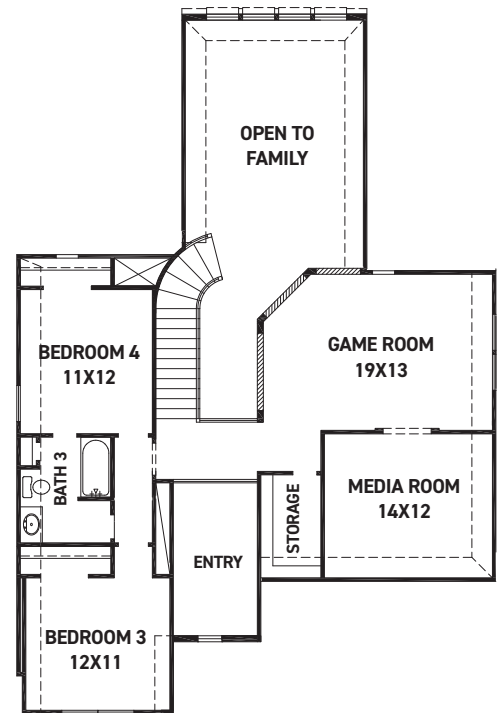
These drawings are conceptual only and are for the convenience of reference. They should not be relied upon as representations, express or implied, of the final detail of the residences. The builder expressly reserves the right to make modifications, revisions, and changes it deems desirable in its sole and absolute discretion. Dimensions and square footages are approximate and may vary with actual construction. Due to design and footage requirements not all options/elevations are available in all locations.



[newmarkhomes.com](http://newmarkhomes.com)



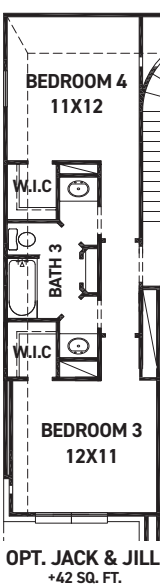
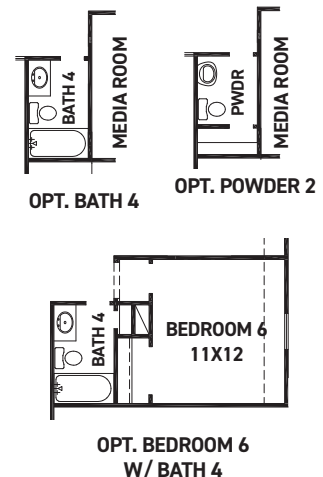
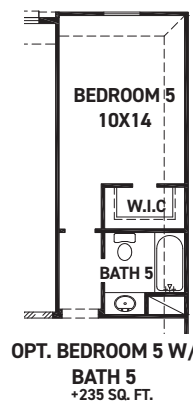
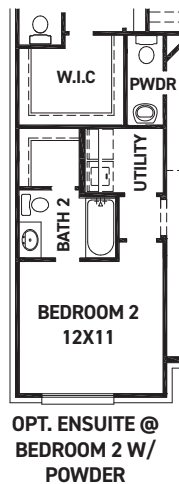
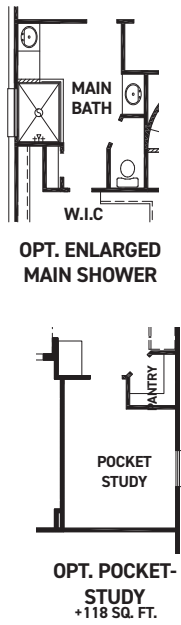
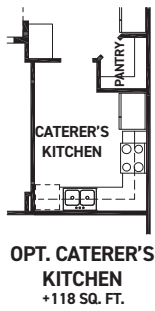
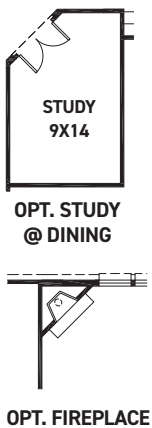
FIRST FLOOR PLAN



SECOND FLOOR PLAN

## FEATURES:

- 2,762 SQUARE FT.
- 4 BEDROOM
- 3 BATHROOM
- 3 CAR GARAGE



REV 06/24 (5016)



These drawings are conceptual only and are for the convenience of reference. They should not be relied upon as representations, express or implied, of the final detail of the residences. The builder expressly reserves the right to make modifications, revisions, and changes it deems desirable in its sole and absolute discretion. Dimensions and square footages are approximate and may vary with actual construction. Due to design and footage requirements not all options/elevations are available in all locations.



[newmarkhomes.com](http://newmarkhomes.com)