



# 21815 Gateway Arch Drive

Porter, TX 77365 | MLS #69209821  
\$584,513

Sq Ft	Beds	Baths	Stories	Garage
<b>2,997</b>	<b>5</b>	<b>4</b>	<b>2</b>	<b>3</b>

NEWMARK HOMES NEW CONSTRUCTION - Koblenz - Welcome home to 21815 Gateway Arch located in the master planned community of The Highlands and zoned to New Caney ISD. This gorgeous home will feature 5 bedrooms, 4 full baths and an attached... [READ MORE »](#)

## Plan Your Visit

The Highlands 50' Model  
Roosevelt Plan  
**MODEL NOW OPEN**

21718 Grayson Highlands Way  
Porter, Texas 77365

---

MODEL HOME HOURS  
Monday to Saturday: 10 a.m. - 6 p.m.  
Sunday: 12 p.m. - 6 p.m.

---

Community Sales Manager  
Celeste Valdez  
[832-646-2527](tel:832-646-2527)  
[cvaldez@newmarkhomes.com](mailto:cvaldez@newmarkhomes.com)  
Rick Cole  
[713-598-1000](tel:713-598-1000)  
[rcole@newmarkhomes.com](mailto:rcole@newmarkhomes.com)

---



**ELEVATION 1**



**ELEVATION 2**



**ELEVATION 3**



**ELEVATION 4**



**ELEVATION 12**



**ELEVATION 13**



**ELEVATION 14**



**ELEVATION 15**

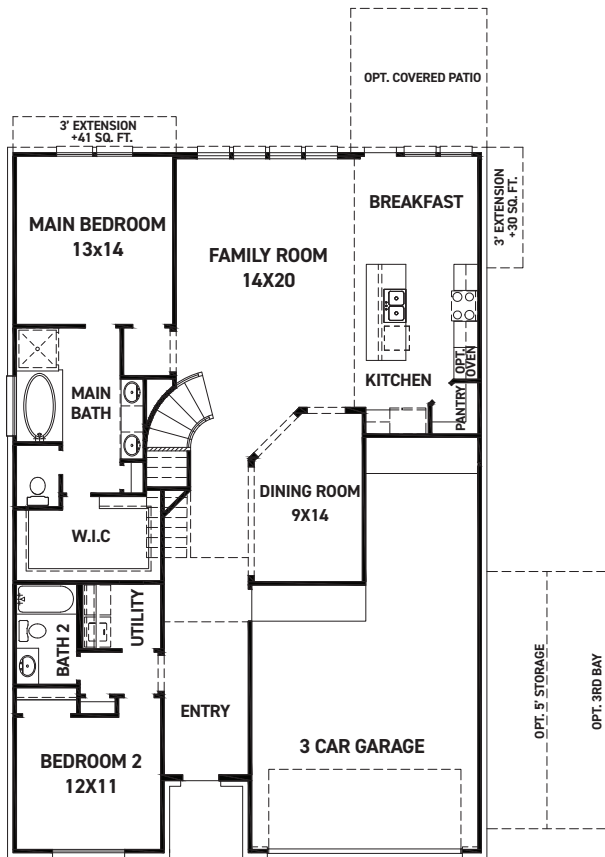
REV 06/24 (5)



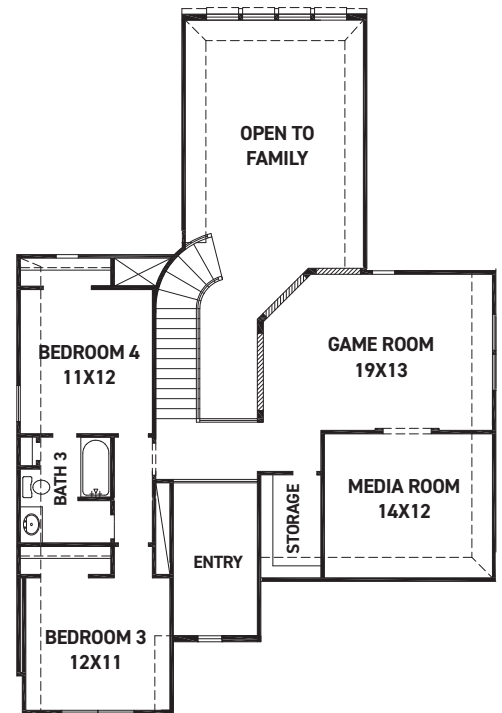
These drawings are conceptual only and are for the convenience of reference. They should not be relied upon as representations, express or implied, of the final detail of the residences. The builder expressly reserves the right to make modifications, revisions, and changes it deems desirable in its sole and absolute discretion. Dimensions and square footages are approximate and may vary with actual construction. Due to design and footage requirements not all options/elevations are available in all locations.



[newmarkhomes.com](http://newmarkhomes.com)



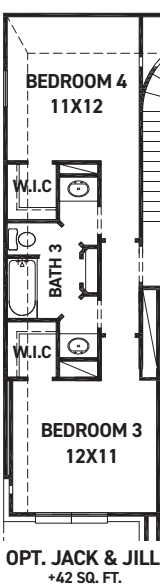
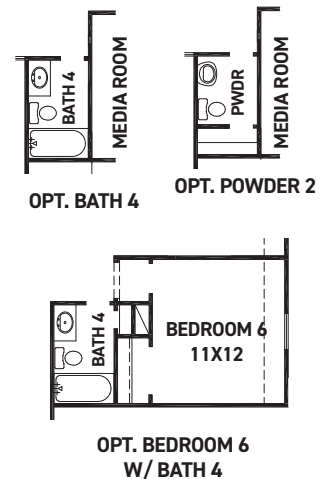
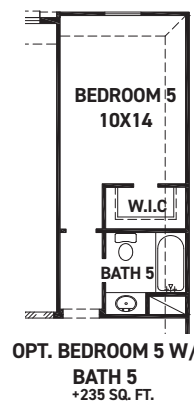
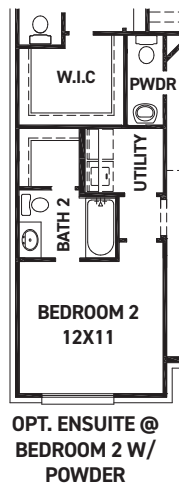
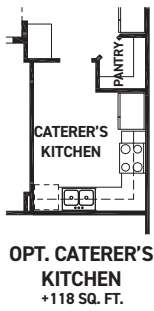
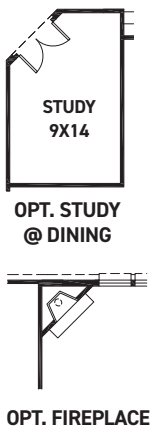
FIRST FLOOR PLAN



SECOND FLOOR PLAN

## FEATURES:

- 2,762 SQUARE FT.
- 4 BEDROOM
- 3 BATHROOM
- 3 CAR GARAGE



REV 06/24 (5016)



These drawings are conceptual only and are for the convenience of reference. They should not be relied upon as representations, express or implied, of the final detail of the residences. The builder expressly reserves the right to make modifications, revisions, and changes it deems desirable in its sole and absolute discretion. Dimensions and square footages are approximate and may vary with actual construction. Due to design and footage requirements not all options/elevations are available in all locations.



newmarkhomes.com