



530 Red Eyed Vireo Court

Magnolia, TX 77354 | MLS #2100081
\$425,000

Sq Ft	Beds	Baths	Stories	Garage
1,811	3	2	1	2

Newmark's Eastland plan in Audubon- Amazing 1 story 3 Bed and 2 Full baths. Popular open concept with ideal living space and wow factors. Family room with plenty of natural light with soaring pointed vault ceilings and extended back pa... [READ MORE »](#)

Plan Your Visit

Audubon 45' Model
Montague Plan
Model Now Open!
307 Prairie Warbler Street
Magnolia, TX 77354

MODEL HOME HOURS
Monday to Saturday: 10 a.m. - 6 p.m.
Sunday: 12 p.m. - 6 p.m.

Community Sales Manager
Ryan Fry
[\(713\) 854-1955](tel:(713)854-1955)
rfry@newmarkhomes.com



ELEVATION A



ELEVATION B



ELEVATION C



ELEVATION D



ELEVATION E

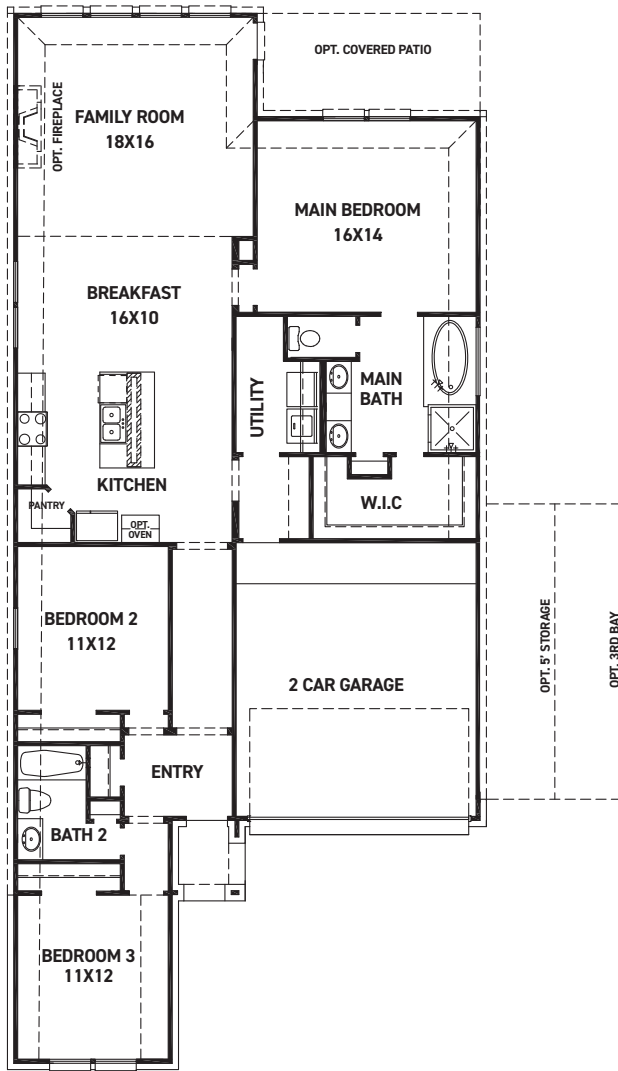
REV 03/23 (4



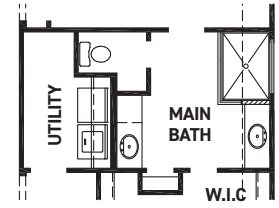
These drawings are conceptual only and are for the convenience of reference. They should not be relied upon as representations, express or implied, of the final detail of the residences. The builder expressly reserves the right to make modifications, revisions, and changes it deems desirable in its sole and absolute discretion. Dimensions and square footages are approximate and may vary with actual construction.



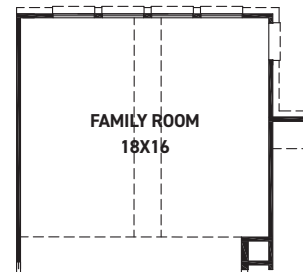
newmarkhomes.com



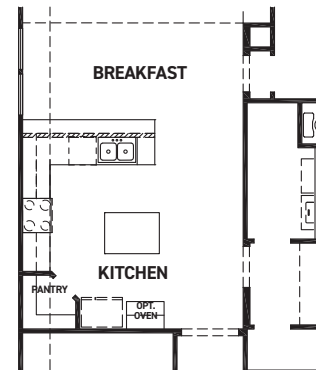
FIRST FLOOR PLAN



OPT. ENLARGED MAIN SHOWER



OPT. POINTED VAULT
OPT. ARCHED VAULT



KITCHEN UPGRADE

FEATURES:

- 1,811 SQUARE FT.
- 3 BEDROOM
- 2 BATHROOM
- 2 CAR GARAGE

REV 03/23 (451E)



These drawings are conceptual only and are for the convenience of reference. They should not be relied upon as representations, express or implied, of the final detail of the residences. The builder expressly reserves the right to make modifications, revisions, and changes it deems desirable in its sole and absolute discretion. Dimensions and square footages are approximate and may vary with actual construction. Due to design and footage requirements not all options/elevations are available in all locations.



newmarkhomes.com