



# 29775 Bur Creek Lane

Fulshear, TX 77441 | MLS #64233236  
\$515,742

Sq Ft	Beds	Baths	Stories	Garage
2,567	4	3	2	2

The NEWTON PLAN by NEWMARK HOMES - A gorgeous modern farmhouse elevation on an expansive half cul-de-sac lot. This popular 2 story home features 4 bedrooms, with 2 bedrooms down. Fantastic chef's kitchen, built-in stainless steel appli... [READ MORE »](#)

## Plan Your Visit

Cross Creek Ranch 45' Model  
Navarro Plan  
29703 Burcreek Lane  
Fulshear, TX 77441

---

MODEL HOME HOURS  
Monday to Saturday: 10 a.m. - 6 p.m.  
Sunday: 12 p.m. - 6 p.m.

---

Community Sales Manager  
Kolton Wilson  
832-552-8713  
[ktwilson@newmarkhomes.com](mailto:ktwilson@newmarkhomes.com)

---



**ELEVATION A**



**ELEVATION B**



**ELEVATION C**



**ELEVATION D**



**ELEVATION E**

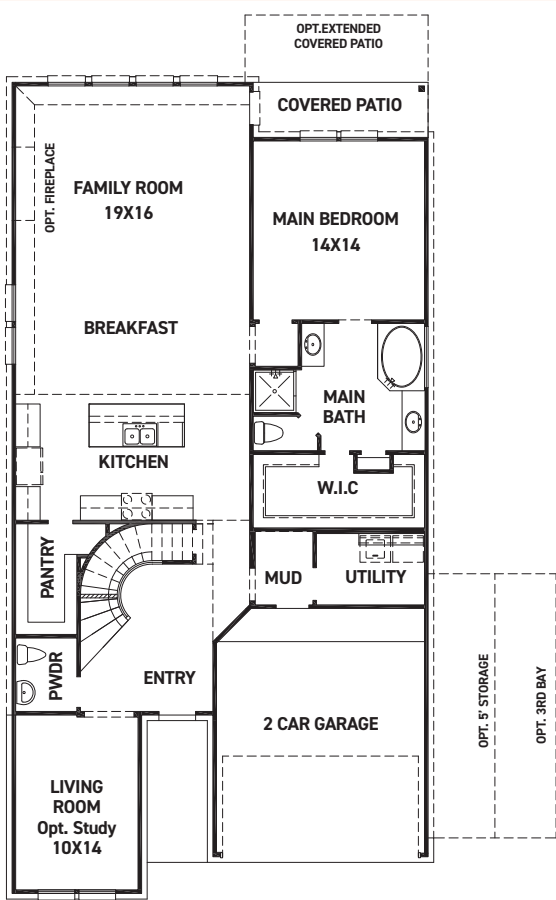
REV 03/23 (4)



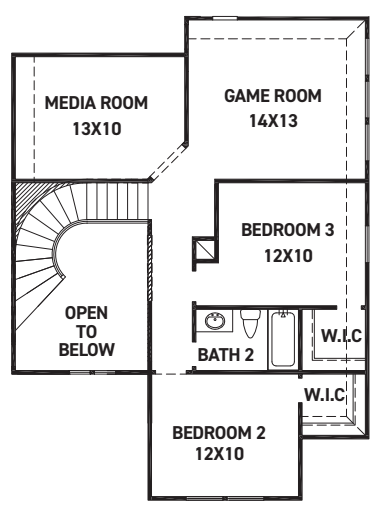
These drawings are conceptual only and are for the convenience of reference. They should not be relied upon as representations, express or implied, of the final detail of the residences. The builder expressly reserves the right to make modifications, revisions, and changes it deems desirable in its sole and absolute discretion. Dimensions and square footages are approximate and may vary with actual construction. Due to design and footage requirements not all options/elevations are available in all locations.



[newmarkhomes.com](http://newmarkhomes.com)



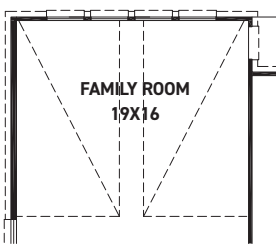
FIRST FLOOR PLAN



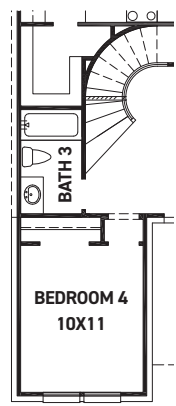
SECOND FLOOR PLAN

### FEATURES:

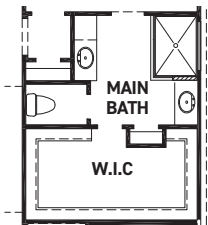
- 2,567 SQUARE FT.
- 3 BEDROOM
- 2 1/2 BATHROOM
- 2 CAR GARAGE



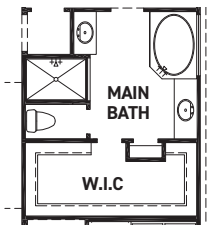
OPT. POINTED VAULT  
OPT. ARCHED VAULT



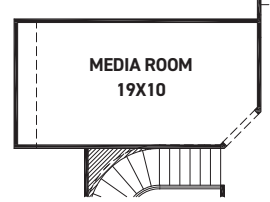
OPT. BEDROOM 4  
W/ BATH 3



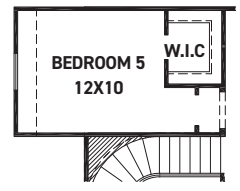
OPT. MAIN BATH  
LAYOUT W/ ENLARGED  
SHOWER



OPT. ENLARGED MAIN  
SHOWER W/ TUB



OPT. EXTENDED  
MEDIA ROOM  
+66 SQ.



OPT. BEDROOM 5  
@ MEDIA ROOM  
+66 SQ.

REV 03/23 (453)



These drawings are conceptual only and are for the convenience of reference. They should not be relied upon as representations, express or implied, of the final detail of the residences. The builder expressly reserves the right to make modifications, revisions, and changes it deems desirable in its sole and absolute discretion. Dimensions and square footages are approximate and may vary with actual construction. Due to design and footage requirements not all options/elevations are available in all locations.



[newmarkhomes.com](http://newmarkhomes.com)