

Just Reduced



10706 Kingston Spring Dr

Missouri City, TX 77459 | MLS #51440784
\$630,000

Sq Ft	Beds	Baths	Stories	Garage
3,073	5	4.5	2	3

Brand new NEWMARK HOME in SIENNA. This new Pozzalana plan has a dramatic entry with a courtyard as well as soaring ceilings in the family room. 5 bedrooms, 4.5 baths, gameroom, 2 car garage. This unique floor plan features a separate re... [READ MORE »](#)

Plan Your Visit

Sienna 50' Model
Koblenz Plan
2006 Ironwood Pass Drive
Missouri City, TX 77459

MODEL HOME HOURS
Monday to Saturday: 10 a.m. - 6 p.m.
Sunday: 12 p.m. - 6 p.m.

Community Sales Manager

Sharon Yu

(832) 818-4663

syu@newmarkhomes.com

Dora Mar

(832) 878-3672

dmar@newmarkhomes.com



ELEVATION 1



ELEVATION 2



ELEVATION 3



ELEVATION 4



ELEVATION 5



ELEVATION 6



ELEVATION 7

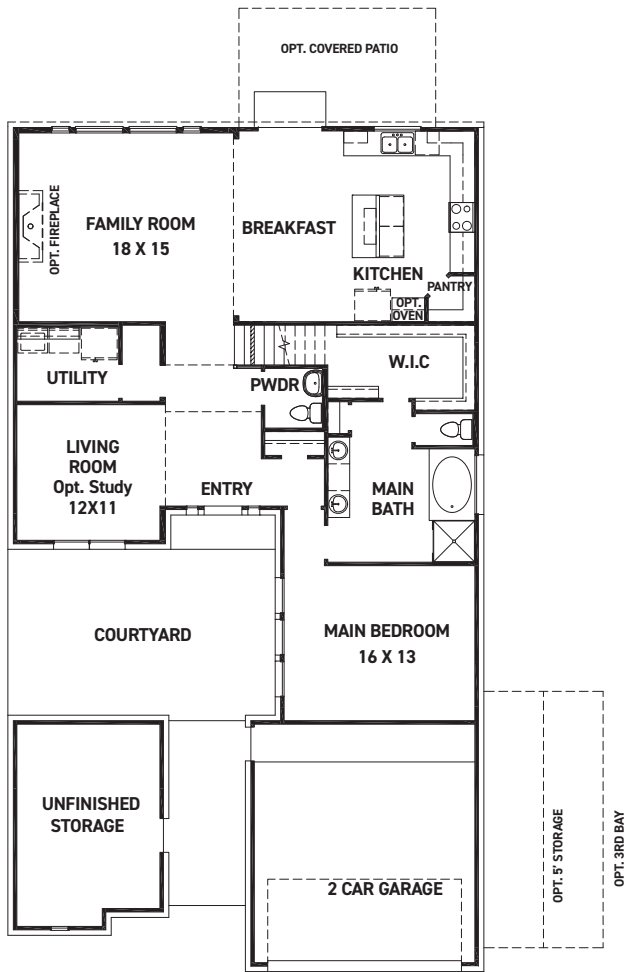
REV 06/24 (5046



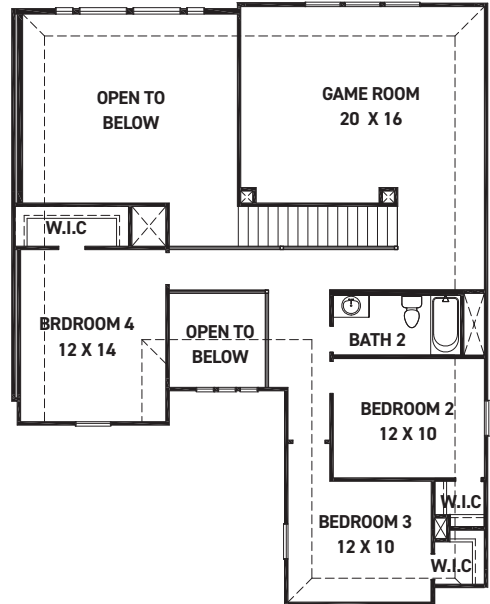
These drawings are conceptual only and are for the convenience of reference. They should not be relied upon as representations, express or implied, of the final detail of the residences. The builder expressly reserves the right to make modifications, revisions, and changes it deems desirable in its sole and absolute discretion. Dimensions and square footages are approximate and may vary with actual construction. Due to design and footage requirements not all options/elevations are available in all locations.



newmarkhomes.com



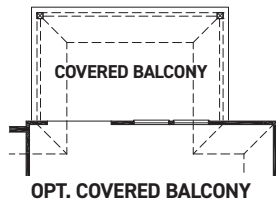
FIRST FLOOR PLAN



SECOND FLOOR PLAN

FEATURES:

- 2813 SQUARE FT.
- 4 BEDROOM
- 2 1/2 BATHROOM
- 2 CAR GARAGE



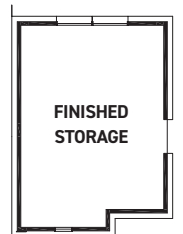
OPT. COVERED BALCONY



OPT. BEDROOM 6/
BATH 5 @ STORAGE
+242 SQ. FT.



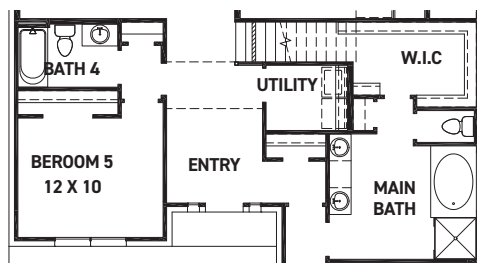
OPT. RETREAT/
POWDER @ STORAGE
+242 SQ. FT.



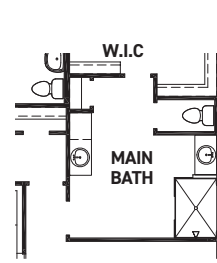
OPT. FINISHED STORAGE
@ STORAGE
+242 SQ. FT.



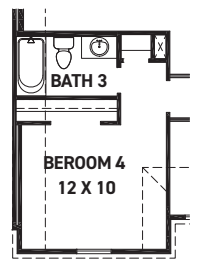
OPT. CORNER
FIREPLACE



OPT. BEDROOM 5/
BATH 4 @ LIVING



OPT. ENLARGED
MAIN SHOWER



OPT. BATH 3

REV 06/24(5046)



These drawings are conceptual only and are for the convenience of reference. They should not be relied upon as representations, express or implied, of the final detail of the residences. The builder expressly reserves the right to make modifications, revisions, and changes it deems desirable in its sole and absolute discretion. Dimensions and square footages are approximate and may vary with actual construction. Due to design and footage requirements not all options/elevations are available in all locations.



newmarkhomes.com