



Plan Your Visit

30147 Gold Finch Place

Fulshear, TX 77441 | MLS #46716983
\$547,900

Sq Ft	Beds	Baths	Stories	Garage
2,850	4	3	2	2

Fabulous new 2-story plan by Newmark, the Monte Carlo, features 4 bedrooms, 3 baths and a 2 car garage. Beautiful 12 ft ceilings in the family room add to the attractive and beautiful large family slider doors. Stunning 8 ft door as yo... [READ MORE »](#)



ELEVATION 1



ELEVATION 2



ELEVATION 3



ELEVATION 4



ELEVATION 5

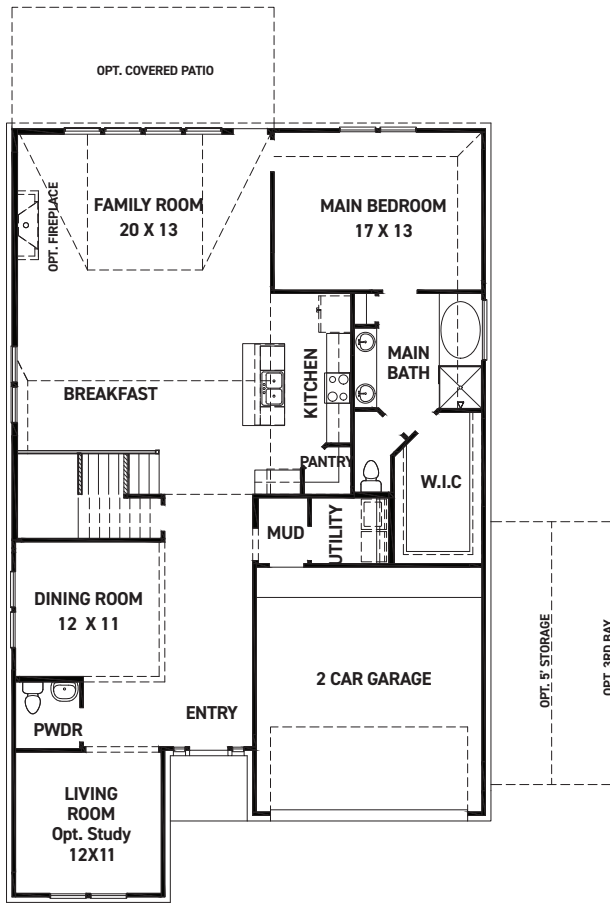
REV 06/24(5043)



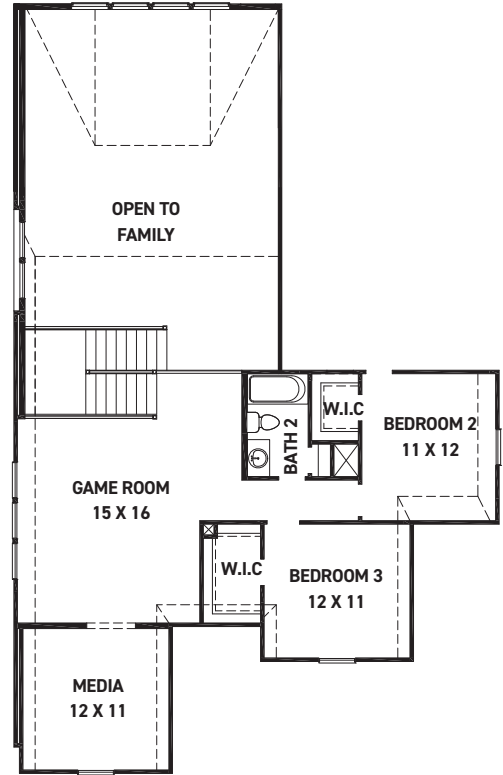
These drawings are conceptual only and are for the convenience of reference. They should not be relied upon as representations, express or implied, of the final detail of the residences. The builder expressly reserves the right to make modifications, revisions, and changes it deems desirable in its sole and absolute discretion. Dimensions and square footages are approximate and may vary with actual construction. Due to design and footage requirements not all options/elevations are available in all locations.



newmarkhomes.com



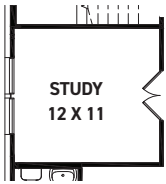
FIRST FLOOR PLAN



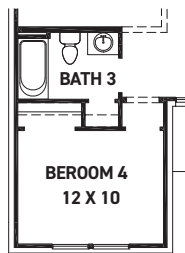
SECOND FLOOR PLAN

FEATURES:

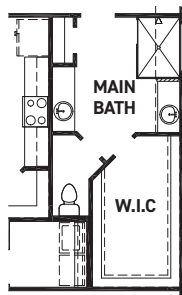
- 2,850 SQUARE FT.
- 3 BEDROOM
- 2 1/2 BATHROOM
- 2 CAR GARAGE



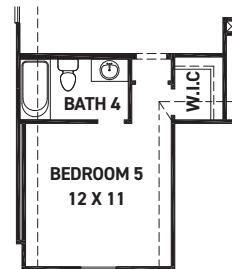
OPT. STUDY @ DINING



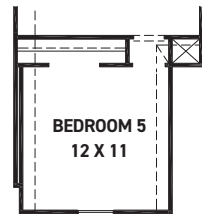
OPT. BEDROOM 4/
BATH 3 @ LIVING



OPT. ENLARGED
MAIN SHOWER



OPT. BEDROOM 5
W/ BATH 4



OPT. BEDROOM 5

REV 06/24 (5043)



These drawings are conceptual only and are for the convenience of reference. They should not be relied upon as representations, express or implied, of the final detail of the residences. The builder expressly reserves the right to make modifications, revisions, and changes it deems desirable in its sole and absolute discretion. Dimensions and square footages are approximate and may vary with actual construction. Due to design and footage requirements not all options/elevations are available in all locations.



newmarkhomes.com